

Washington Township Exposed Sewer Streambank Stabilization

Design Features: Rip-rap, streambank grading, and gravel bar removal.

Date of Installation: May 2025

Location: Washington Township, PA

Client: Washington Municipal Authority

Cost: \$73,907.79

Project Partners: Natural Resources Conservation Service (NRCS)- Emergency Watershed Protection Program, Department of Environmental Protection (DEP), and Eveready Contracting.

Project Contact: Chelsea Walker,
Chelsea@wcdpa.com



Severe streambank erosion around exposed sanitary sewer and threatening SR 366/ Greensburg Road.

Project Specifications

In April 2024, significant rainfall caused Pucketa Creek to erode around a sanitary sewer line exposing 27 feet of the line and threatening the embankment of SR 366, Greensburg Road. The vertical and undercut eroding streambank along this area was very unstable. The Municipal Authority of Washington Township reached out to the Westmoreland Conservation District office. We provided technical assistance and project management. Funds were acquired from an NRCS – Emergency Watershed Protection Grant and a DEP- Office of Water Programs Grant to encase the exposed sanitary sewer line in concrete and implement streambank stabilization techniques along the eroding section.

The 27 feet of exposed sanitary sewer line was encased in concrete and R-8 sized rip-rap was placed along the toe of the slope and smaller R-6 size stone was used to stabilize the section of eroding streambank. A section of gravel bar material was removed to maintain a uniform stream width. The site was seeded and mulched.

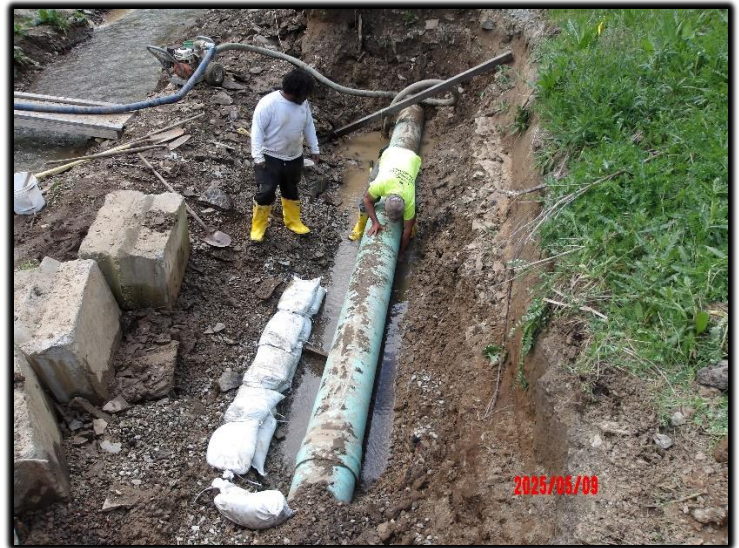
Benefits/Performance Measures

Overall, this project stabilized over 238 feet of actively eroding streambank and 27 feet of exposed sanitary sewer was incased in concrete. The Municipal Authority of Washington Township and adjacent landowner know that the streambanks are stabilized and sanitary sewer is protected.

Washington Township Exposed Sewer Streambank Stabilization



Before: Streambank erosion threatening utilities.



During: Preparing the sewer line for concrete.



After: Stabilized streambank and yard area restored.