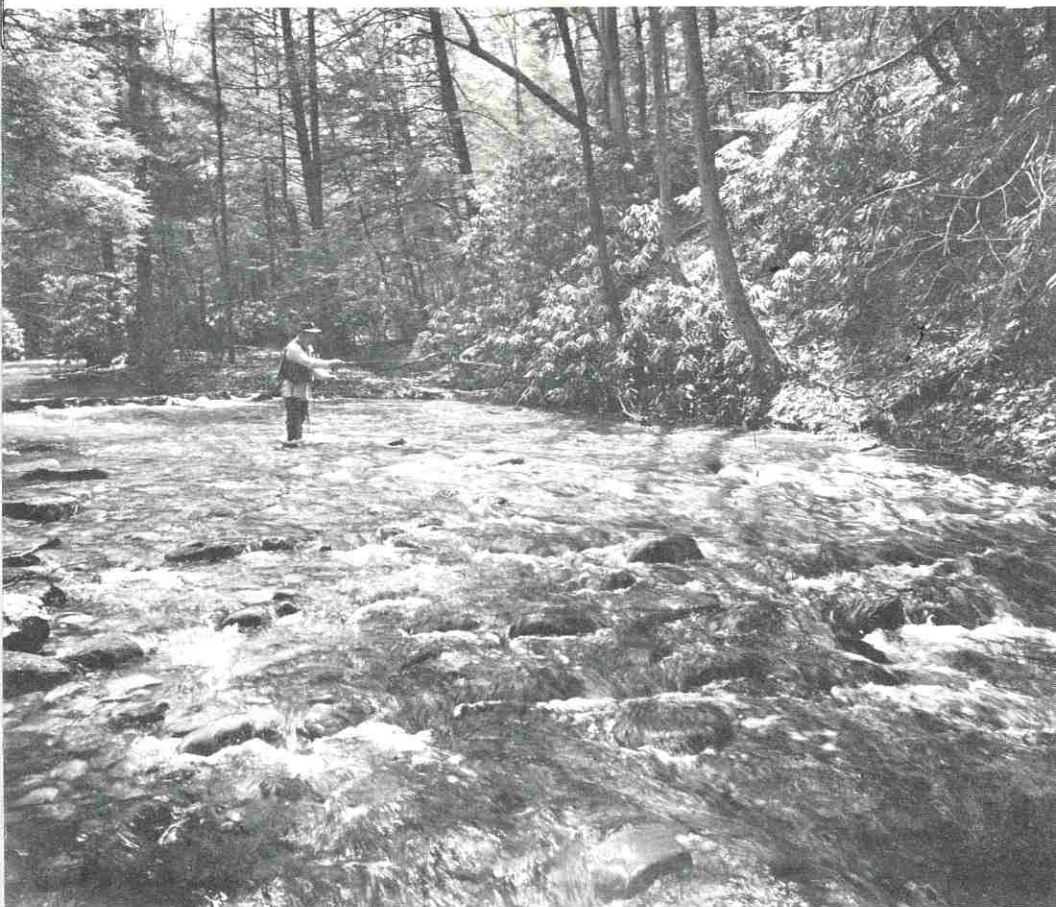


# 1968 ANNUAL REPORT



## WESTMORELAND COUNTY

SOIL AND WATER  
CONSERVATION DISTRICT

## YOUR DISTRICT

Your WESTMORELAND COUNTY SOIL AND WATER CONSERVATION DISTRICT is a subdivision of Pennsylvania State Government. It is administered by a duly elected Board of Directors composed of four farmer directors, two urban directors, and one County Commissioner director. It operates under supervision of the Pennsylvania Department of Agriculture. The Board of Directors for 1968 was:

Gilbert Hutter	Chairman
Paul Heyworth	Vice-Chairman
Dr. Bernard F. Scherer	County Commissioner Director
Edward A. Rinkhoff, Jr.	Treasurer
Ford M. Frank	Secretary
J. Roy Houston	Director
DeWitt Rugh	Director
Frank E. Skacel, Sr.	Director
Randall Campbell	Associate Director
Milan Martinisko	Associate Director
Joseph E. Simon	Associate Director
Alex Smith	Associate Director
Calvin G. Gerhard	Executive Assistant
Marge Copeman	District Clerk

We express our appreciation to the Westmoreland County Commissioners—Dr. Bernard F. Scherer, James R. Kelley, and John J. LaCarte who contributed greatly to the District's progress, not only through financial support, but through sincere interest and encouragement in carrying out programs to wisely use and conserve our natural resources in Westmoreland County.

We also want to thank all other organizations and individuals who have helped to further resource conservation programs in the county.

We must continue to put forth the Basic Conservation and Resource needs of the County and remind all that resource work is vital to the well-being of our County.

Some of the major responsibilities of your Soil and Water Conservation District are:

1. Conservation — Have desired conservation practices properly installed on public and private lands wherever they are needed. This includes practices on rural, suburban and urban lands.
2. Coordination — Coordinate the work of the cooperating agencies as it applies to the District's program, and assist with the natural resource programs of other organizations.
3. Promotion — Promote the concepts of proper resource planning, management, and conservation.
4. Motivation — Promote the development and implementation of local programs regarding natural resources.
5. Information — Provide basic and interpretive information on natural resources to public and private interests.
6. Planning — Provide definite plans and objectives to the development, use, management, and conservation of natural resources.

7. Administration— Function in an orderly and efficient manner, using the powers given the District by law to obtain the necessary resources, financial or otherwise, in order to carry out a comprehensive program.

### SOIL AND WATER CONSERVATION

During 1968 the cooperating agencies of the District provided technical and cost-sharing assistance in planning and establishing the following conservation practices:

Strip Cropping	911 acres
Tile Drains	86,157 feet
Diversions	17,962 feet
Grassed Waterways	8 acres
Ponds	15
Spring Developments	21
Drop Structure	1

Many acres of agronomic practices such as conservation cropping systems, cover cropping, pasture and hayland planting and renovation and crop residue use were also applied to aid in conserving soil and water. Landowners continued to participate in soils and forage testing programs.

Fifty-eight landowners received technical assistance in developing soil and water conservation plans for their land. The District received requests for planning from one hundred and fifty-five landowners during the year.

### WATERSHED AND FLOOD PREVENTION



Jacobs Creek Flooding in 1967

The Jacobs Creek Watershed Protection and Flood Prevention work plan was approved by all sponsors during the year. It is hoped that the plan will be approved for operation in the near future.

## WILDLIFE HABITAT IMPROVEMENT

In Westmoreland County many different kinds of wildlife can be found, such as pheasants, rabbits, grouse, turkey, deer and bear. Much of the food and cover is provided by the County's farm lands. Special wildlife plantings and conservation on the farm lands are helping to maintain wildlife population throughout the country.

Landowners received 43,100 evergreen seedlings, 11,600 wildlife shrubs and assistance in establishing 19 acres of border cuttings. The Pennsylvania Game Commission continued wildlife habitat improvement on their lands in 1968.

Sportsmen's groups continued their activities in improving wildlife habitat in the County.

Thirteen farm ponds were stocked with fish from the U.S. Department of Interior during the year. Farm pond management by fertilization was carried out on a large number of these ponds.



**Fish Stocking in Bridgeport Dam**

During the year 70,050 fish were planted in County waters. The Pennsylvania Fish Commission's new lake near Donegal on Four Mile Run has been completed. This will add 98 acres of fishing waters in the County.

## WOODLAND IMPROVEMENT

Forty-three percent of the County is in woodland. Approximately ninety-three percent of this woodland is owned by private landowners. Much of this woodland needs improvement. In addition a recent survey of the County shows that nearly 20,000 acres should be planted to trees.

### WOODLAND MEASURES APPLIED 1968

Timber Stand Improvement	50 acres
Seedlings Planted	154,000
Woodland Management Plans Developed	12
Tree Planting	102 acres

The Pennsylvania Department of Forests and Waters educational program this past season made a special effort to supply services to the summer youth camps in Westmoreland County. A special occasion occurred at the Edgar Kaufman Girl Scout Camp near West Fairfield, Pennsylvania. The District and Service Foresters assisted with a cooperative planning and field demonstration leader conservation educational effort. This special forest conservation action covered plant and tree identification, timber marking and management, forest fire suppression, and lectures for a two-day period.

Woodland is an important economic resource to the County not only for woodland products but also in its use for income producing recreation enterprises such as campsites, picnic areas, nature trails and ski slopes.

### ROADSIDE CONSERVATION AND BEAUTIFICATION

Approximately 48 acres of highway rights-of-way were seeded. Established areas on slopes, highways, grass interchanges, islands and median strips are fertilized and maintained. Unwanted growth of grass and weeds is controlled. Tree trimming and removal is performed.

### COUNTY-WIDE SOIL SURVEY

The soil survey of Westmoreland County contains information that can be applied in managing farms, ranches, and woodlands; in selecting sites for buildings and structures, roads and ponds; and in appraising the value of tracts of land for agriculture, industry, or recreation.



The Supervisors of Hempfield Township, Westmoreland County, Pennsylvania point out their application of the Westmoreland County Soil Survey Report in the planning and development of their community.

Special emphasis was made to the end that soil survey data was made available to all Westmoreland County communities. Interpreting information in the soil survey for non-agricultural uses was stressed in working with officials of planning commissions, representatives of townships and other municipalities and non-agricultural users of land.

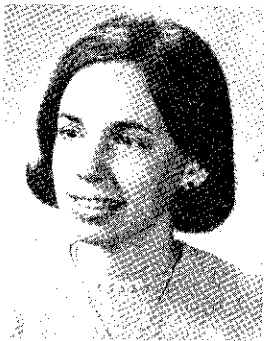
## INFORMATION AND EDUCATION ACTIVITIES

The District and its cooperating agencies carried out an extensive program aimed at informing and educating the public as to the need for wisely using and conserving our soil, water, and related resources. Increased interest, understanding and concern about conservation and resource development was stimulated by District Newsletters, the News Media, and the Annual Report.

The District and cooperating agencies joined together in sponsoring a joint Rural-Urban Natural Resource Conservation Banquet. Emphasis was placed on the conservation of natural resources in urban as well as rural areas.

The Vocational Agriculture curriculum in Westmoreland County includes teaching soil conservation activities through class discussions, conservation speakers, field trips, films and demonstrations. Soil Conservation practices are also carried out on the home farms of the boys as part of their supervised farming programs.

The state-wide FFA Wildlife Habitat Development Contest award came to this District through the efforts of Gary Miller of Derry Area High School. Predator trapping, construction and maintenance of wildlife feeders and food strip plantings were included in the program. A "Queen of the Furrow" and Plowing Contest were also held in the District.



**Kathy Hutter of Mount Pleasant was chosen "Queen of the Furrow" to represent the North Central Area of Pennsylvania.**

Conservation materials and information on conservation were provided to local school systems in the observance of Conservation Education Week.

A Girl Scout Leader's Guide was published and distributed to the Girl Scouts of Westmoreland County.

Maps, technical surveys, soil inventories and engineering services were made available to the townships, boroughs and cities.

A Conservation Air-Tour over Central Westmoreland County presented 200 people with the opportunity to view the utilization of the County's natural resources.

An extensive effort was made to convince landowners in the Jacobs Creek Watershed area to become cooperators and thereby assure the \$3.8 million Jacobs Creek watershed flood control and prevention project of becoming a reality under Public Law 566.

An executive Assistant was added to the conservation program in Westmoreland County. The major activity of the Executive Assistant was directed toward getting effective programs of resource conservation carried out and acquainting our vast population with the fundamentals of land and water management.

Legislative support of Environmental Conservation Programs was encouraged by letters and personal contact with our representatives.

Civic groups, farm organizations, schools, churches, sportsmen's groups, and the general public were presented with conservation education programs, booklets, films and slide talks. Many of these groups who were largely unacquainted with the fundamentals of land and water management and the technical and financial services that the District can make available to them were made aware of these services.

### DISTRICT PROGRAM

The revised District Program received wide distribution in 1969. This program sets up guidelines for the development of Westmoreland County's natural resources. This program states the facts about our resources such as erosion, soil types, land use, land conditions, forest damage, and sedimentation. It outlines what the District believes must be done to correct problems and develop resources for wider and better use.

### DISTRICT ADMINISTRATION

Your District Board of Directors held 12 regular meetings to conduct the business of the District. The District Program was formulated, assistance was secured from agencies who could contribute to the conservation effort, the services of government agencies were coordinated and priority was assigned to resource development in the District.

The District was represented at the Executive Council Meetings of the Pennsylvania State Association of Soil and Water Conservation Districts and also the Pennsylvania and the National Association of Soil and Water Conservation Districts Annual Conventions.

### COOPERATING AGENCIES

The following local, state, and federal agencies are playing a vital role in assisting the Westmoreland County Soil and Water Conservation District.

Pennsylvania Department of Forests and Waters

Pennsylvania Department of Health

Pennsylvania Department of Highways

Pennsylvania Fish Commission

Pennsylvania Game Commission

Pennsylvania State Soil and Water Conservation Commission

U. S. Department of Interior

U. S. D. A. Agricultural Stabilization and Conservation Service

U. S. D. A. Farmer's Home Administration

U. S. D. A. Soil Conservation Service

Westmoreland County Agricultural Extension Service

Westmoreland County Planning Department

Westmoreland County Vocational Agricultural Department

WESTMORELAND COUNTY  
SOIL AND WATER CONSERVATION DISTRICT  
932 St. Clair Way, Route 30 East  
Greensburg, Pennsylvania 15601