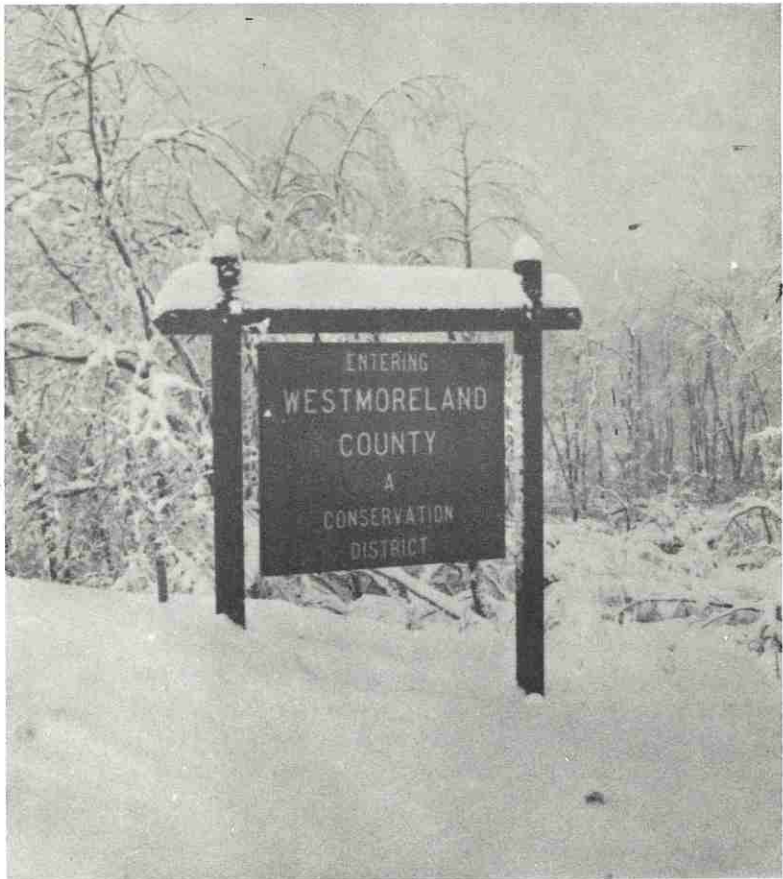


1969 ANNUAL REPORT



WESTMORELAND COUNTY

SOIL AND WATER

CONSERVATION DISTRICT

YOUR DISTRICT

Your WESTMORELAND COUNTY SOIL AND WATER CONSERVATION DISTRICT is a subdivision of Pennsylvania State Government. It is administered by a duly elected Board of Directors composed of four farmer directors, two urban directors, and one County Commissioner director. It operates under supervision of the Pennsylvania Department of Agriculture.

Board of Directors

Gilbert Hutter	Chairman
Paul Heyworth	Vice-Chairman
Dr. Bernard F. Scherer	County Commissioner Director
Edward A. Rinkhoff, Jr.	Treasurer
J. Roy Houston	Director
DeWitt W. Rugh	Director
Frank E. Skacel, Sr.	Director

Associate Directors

Randall Campbell	Mrs. Harry Saxman
Milan Martinisko	Mrs. John Turnage
Joseph E. Simon	Father Firmin Beyer
Alex Smith	Grant Porterfield, Jr.
Thomas Hughes	

* * *

Ford M. Frank	District Secretary
Calvin Gerhard	Executive Assistant
Marge Copeman	Administrative Secretary

We express our appreciation to the Westmoreland County Commissioners—Dr. Bernard F. Scherer, John J. LaCarte and James R. Kelley who contributed greatly to the District's progress, not only through financial support, but through sincere interest and encouragement in carrying out programs to wisely use and conserve our natural resources in Westmoreland County.

We also want to thank the cooperating governmental agencies, organizations and individuals who have helped to further resource conservation programs in the county.

We must continue to put forth the Basic Conservation and Resource Needs of the County and remind all that resource work is vital to the well-being of each individual.

The major responsibilities of your Soil and Water Conservation District are: conservation of public and private lands; coordination of District programs with cooperating agencies and other organizations; promoting concepts of proper resource planning, management, and conservation; motivation of conservation programs; and providing conservation information, planning, and administration.

SOIL AND WATER CONSERVATION

During 1969 the United States Department of Agriculture, Soil Conservation Service; United States Department of Agriculture, Agricultural Stabilization and Conservation Service; and Westmoreland County Cooperative Extension Service provided technical and cost-sharing assistance in planning and establishing 1,022 acres of stripcropping; 129,282 feet of tile drains; 8,224 feet of diversions; 25 acres of grassed waterways; 10 ponds; and 25 spring developments.

Many acres of agronomic practices such as conservation cropping systems, cover cropping, pasture and hayland planting and renovation and crop residue use were also applied to aid in conserving soil and water. Landowners continued to participate in soils and forage testing programs.



Contour Stripcropping

Eighty-four landowners received technical assistance in developing soil and water conservation plans for their land. The District received requests for planning from sixty-three landowners during the year.

WATERSHED PROTECTION AND FLOOD PREVENTION

The Jacobs Creek Watershed Protection and Flood Prevention Project received Congressional approval in late summer of 1969. Land acquisition in the project involving Westmoreland and Fayette Counties will begin during 1970.

The District will be responsible for working with landowners and operators to carry out the land treatment measures to be established in the county. With the technical assistance of the United States Department of Agriculture, Soil Conservation Service, the District will assist landowners in the preparation and application of farm conservation plans.

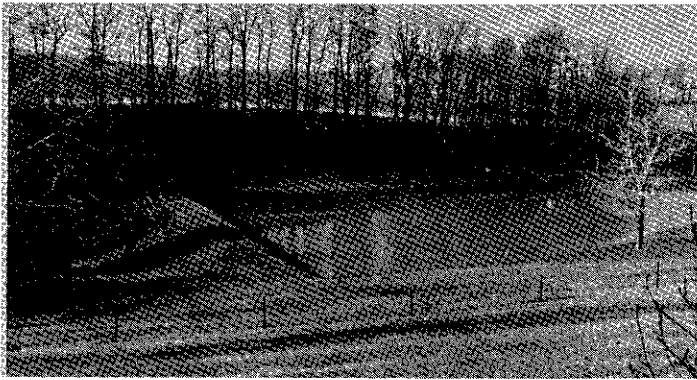
The intensive program of assisting farmers in the drainage areas above the structural works of improvement is of the highest priority. Fifty per cent of the land in the drainage area above each floodwater retarding structure must be under cooperative agreement with the District before construction of the dam is initiated. Seventy-five per cent of the planned critical area treatment must be completed or in progress before the structural program is initiated.

WILDLIFE HABITAT IMPROVEMENT

Pheasant, rabbit, squirrel, grouse, turkey, deer, and bear are among the species of wildlife found in Westmoreland County. Farm lands provide much of the food and cover necessary to maintain wildlife. Special wildlife plantings and conservation on farm lands contributed to the increase in wildlife population in 1969.

Landowners received 36,620 evergreen seedlings; 7,800 wildlife shrubs; and assistance in establishing 20.7 acres of border cuttings. The Pennsylvania Game Commission continued wildlife habitat improvement on their lands in 1969. The Commission has 43,671 acres open to public hunting in the county comprising game lands and lands of 381 owners cooperating with the Pennsylvania Game Commission in farm game projects.

Sportsmen's groups continued their activities in improving wildlife habitat in the county.



Farm Pond

Sixteen farm ponds were stocked with fish from the United States Department of Interior during the year. Farm pond management by fertilization was carried out on a large number of these ponds.

Fifty-six miles of streams, thirty-three miles of rivers, and nine lakes were stocked with 911,645 fish during 1969 by the Pennsylvania Fish Commission.

WOODLAND IMPROVEMENT

Westmoreland County has 312,000 acres in woodland. Approximately ninety-three per cent of this woodland is owned by private landowners and needs improvement. County woodlands should be managed to develop the maximum potential for timber production, recreation, and watershed protection in accordance with the soil site index.

The Pennsylvania Department of Forests and Waters distributed 110,000 seedlings in Westmoreland County. Eleven woodland management plans were developed and 103 acres were planted in trees. Timber stand was improved on 110 acres.

ROADSIDE CONSERVATION AND BEAUTIFICATION

Approximately 30 acres of highway rights-of-way were seeded. Established areas on slopes, highways, grass interchanges, islands, and median strips were fertilized and maintained. Unwanted growth of grass and weeds was controlled and tree trimming and removal was performed. Boy Scouts in planting projects undertook the planting of 300 seedlings along Route 119 and Traffic Route 30.

COUNTY-WIDE SOIL SURVEY

The published *Soil Survey* of Westmoreland County was made available to users during 1969. Major field work for this soil survey was done in the period 1957-1962. Soils names and descriptions were approved in 1965. This survey was made cooperatively by the United States Department of Agriculture Soil Conservation Service, the College of Agriculture and Agricultural Experiment Station of Pennsylvania State University, and the Pennsylvania Department of Agriculture State Soil and Water Conservation Commission. The survey is part of the technical assistance furnished to the Westmoreland County Soil and Water Conservation District.



The Supervisors of Franklin Township, Westmoreland County, Pennsylvania, point out their application of the Westmoreland County *Soil Survey* report in the planning and development of their community.

Major uses of the Soil Survey during 1969 were: (a) Utilization of soil survey data in developing conservation plans for farms; (b) Utilization of soil survey data by the Westmoreland County Planning Department in development of the Water Systems Plan and Official Sewerage Facilities Plan for Westmoreland County and its Constituent Municipalities; (c) Use of soil survey data in land subdivision, recreational planning, industrial planning and many other endeavors; (d) Use of soil survey interpretations to aid in identifying floodplains within the county to help prevent the tragic realities of loss of life and appreciable property damage; and (e) Use by the Pennsylvania Department of Health in training local sewage enforcement officers in compliance with Sewage Act 537.

INFORMATION AND EDUCATION ACTIVITIES

The spirit of involvement and a diversification of programs were the driving forces behind the surge of activities in the Westmoreland County Soil and Water Conservation District during 1969. The District, cooperating agencies, and governmental agencies worked closely in informing and educating the public as to the need for wisely using and conserving our soil, water, and related resources.

The District entered into a Memorandum of Understanding with the Planning Department in 1969. Under the "Interim Zoning" Ordinance for Westmoreland County, the District will serve as a reviewing board on all developments five acres or larger. Resource data was provided to local industrial development organizations. The Soil Survey and District Long-Range Programs were utilized in the development of the Water Systems Plan and Official Sewage Facilities Plan for Westmoreland County and its Constituent Municipalities.



Linda Adams of Youngstown, Pennsylvania, was crowned "Conservation Queen" for 1969. Linda attends the University of Pittsburgh at the Greensburg Campus.

Giant steps into the field of public relations were undertaken by the District. A Town and Country Conservation Workshop was sponsored in cooperation with 12 state, county, and local civic and governmental groups. Two conservation television shows were conducted and more than 20 conservation talks were presented to civic and social groups by the District Directors. Special awards were given in 1969 to an Outstanding Conservation Farmer, Future Farmers of America Land Judging, and Plowing Contest winners. A Conservation Queen was chosen and reigned at all District functions. More than 200 people participated in the Annual Conservation Air Tour.

The organizational structure of the District was expanded to include five additional Associate Directors. The District became a liaison with the Boy Scout Committee on the 1971 Conservation "Good Turn" Project. A Junior Board of Directors was initiated for the purpose of organizing youth boards, under the supervision of the District Directors, to promote conservation at youth organizations, schools, churches, camps, and various outdoor conservation projects. A scout troop and individual conservation award was presented to the unit and scout who achieved the greatest level of self and community conservation education during 1969.

The Vocational Agriculture curriculum in Westmoreland County includes teaching soil conservation activities through class discussions, conservation speakers, field trips, films and demonstrations. The District worked with High School educators toward the creation of outdoor biological conservation laboratories. Steps were taken to have conservation included in the school curriculum in county schools where it is not yet available.

The District assisted in the formation of steering committees for Watershed Associations at Turtle Creek and Loyalhanna Creek covering approximately 400 square miles. Government officials were encouraged by letters and personal contact to support the Jacobs Creek Flood Control and Prevention Project. An extensive effort was made to establish land treatment measures in the Jacobs Creek Watershed by the preparation and application of farm conservation plans.

DISTRICT PROGRAM

The functions of the District were broadened in 1969 to provide leadership and technical assistance for environmental planning at the local level. The District endeavored to close the communication gap between urban and rural residents by getting the conservation message across to every group possible. It worked directly with city planners, county zoning committees, urban renewal projects, farmers, and civic organizations. Comprehensive studies were made to assess environmental problems and to gather information concerning the available resources for tackling the problems.

DISTRICT ADMINISTRATION

Your District Board of Directors held 12 regular meetings to conduct the business of the District. The District program was formulated, assistance was secured from agencies who contribute to the conservation effort, the services of government agencies were coordinated and priority was assigned to resource development in the District.

The District was represented at the Executive Council Meetings of the Pennsylvania State Association of Soil and Water Conservation Districts and also the Pennsylvania and the National Association of Soil and Water Conservation Districts Annual Conventions.

COOPERATING AGENCIES

The following local, state, and federal agencies are playing a vital role in assisting the Westmoreland County Soil and Water Conservation District.

- Pennsylvania Department of Forests and Waters
- Pennsylvania Department of Health
- Pennsylvania Department of Highways
- Pennsylvania Fish Commission
- Pennsylvania Game Commission
- Pennsylvania State Soil & Water Conservation Commission
- U.S. Department of Interior
- U.S.D.A. Agricultural Stabilization & Conservation Service
- U.S.D.A. Farmer's Home Administration
- U.S.D.A. Soil Conservation Service
- Westmoreland County Agricultural Extension Service
- Westmoreland County Planning Department
- Westmoreland County Vocational Agricultural Department



**WESTMORELAND COUNTY
SOIL AND WATER CONSERVATION DISTRICT
932 St. Clair Way, Route 30 East
Greensburg, Pennsylvania 15601**