

WESTMORELAND CONSERVATION DISTRICT

1977 ANNUAL REPORT

CONSERVATION DISTRICT LEADERS

We are a subdivision of State government and are responsible under law for conservation work within Westmoreland County. The District is governed by a seven-man Board of Directors who are appointed by the County Commissioners. The Directors serve without pay to insure the protection of our environment.

The basic purposes of the Conservation District's priorities are to assure Westmoreland County of adequate water supplies, land capability to produce supplies of food and fiber, and the continuing protection of our rivers and streams against siltation.

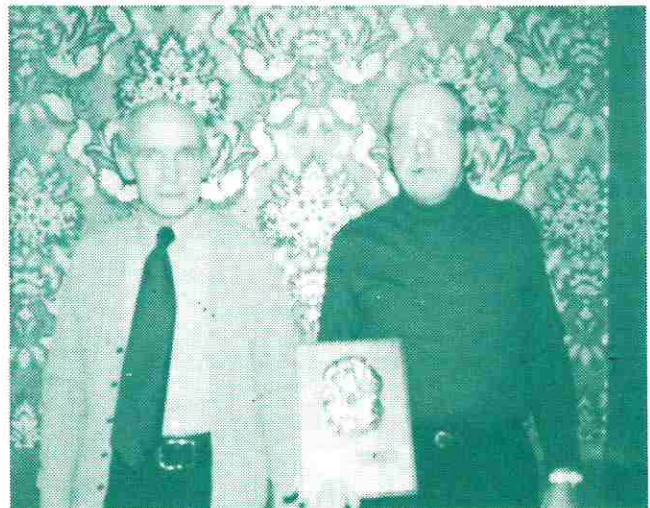
The Conservation District is aware of the incredibly fast upset in traditional patterns of life and the resulting modification in the very quality of our existence. We realize there must be some compromise between our ecology and economy. With this in mind, we will continue in a positive manner toward the future.



Pictured above left to right: County Commissioner Chairman Ted Simon and J. Roy Houston. Roy has been reappointed by the County Commissioners to serve a four-year term as Director of the Conservation District.

AWARD GOES TO DISTRICT

The Westmoreland District was selected as Pennsylvania's first place winner in the 30th annual Goodyear Conservation Awards Program. The contest is sponsored by the Goodyear Tire and Rubber Company in association with the National Association of Conservation Districts.



Pictured left to right accepting the State First Place Conservation Award are Directors Bill Buttermore, Mount Pleasant and Boyd Wolff, New Alexandria.

John R. Wigle, District Outstanding Cooperator and Frank Skacel, board member, accompanied representatives from 52 other states on the grand awards tour. It was an all expense paid vacation study trip to the Goodyears farms and the Wigwam Resort, Litchfield Park, Arizona.

EPA CONFERENCE

Westmoreland County was represented at the U.S. Environmental Protection Agency Conference on Act 208 Planning at Reston, Virginia.

Elwood Leslie, the District's Executive Director, was part of a team which discussed Erosion & Sediment Control at the Nation Conference.

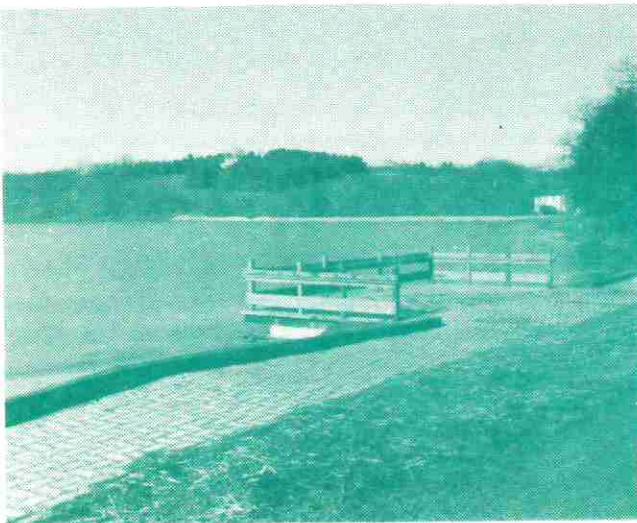
COUNTY RC&D PROJECTS

Westmoreland County is one of five included in the Penn's Corner RC&D Area. Others are Allegheny, Greene, Fayette, and Washington; all which are located in Southwest Pennsylvania. Penn's Corner encompasses an area of 2,571,520 acres and has a population of two and one-half million.

Out of a total of one hundred fifty-three RC&D projects, fifty-eight are designated for Westmoreland County. Six are critical area treatment, one is land drainage, fifteen are water-based fish and wildlife or recreation, three are accelerated services, twenty-eight are associated measures, and five are multi-county measures.

Two associated measures have been completed and two other projects are nearing completion. These include the "Fishing for the Handicapped" at Twin Lakes Park and the "West Newton Noise Park" (Geohring Park). The Twin Lakes project consists of three fishing decks, hard surface trails, and parking area. All three contracts are being cost-shared by the SCS with RC&D funding at a 50% rate.

Other measures in preparation stages are: Trafford B-Y, Northmoreland, Mammoth, and Kennedy Parks.



FISHING AREA FOR THE HANDICAPPED

District meetings, held the fourth Wednesday of each month, are open to the public. The Board of Directors is comprised of four Farm, two Urban, and one County Commissioner Director.

THE CONSERVATION DISTRICT AND SOIL CONSERVATION SERVICE

Technical expertise is provided to the Conservation District by the USDA Soil Conservation Service.

Item or Service Provided	Number of Items
Service to Individuals	587
Conservation Practices Completed	159
Conservation Plans Completed	37
Inventories and Evaluations	29
Services to Units of Government	255
E & S Control Plans Reviewed	76
ACP Referrals Completed	93
Animal Waste Systems Completed	4
Contour Strip Cropping	1,110 feet
Spring Developments	19
Tile Drains	80,395 feet
Debris Basins Designed	2
Ponds	6

ENVIRONMENTAL INFORMATION CENTER DEDICATED TO LAUDADIO

The Environmental Information and Nature Center at Twin Lakes Park has been renamed the "John F. Laudadio Sr. Environmental and Nature Center."

The dedication was made in tribute to Laudadio who was recognized for his tireless efforts in conservation and with the recommendation of the County Sportsmen League and the Conservation District.

The Center is open Tuesday through Friday from 8 a.m. -- 4 p.m. and Saturday from 9 a.m. -- 4 p.m. The EIC contains environmental literature and educational displays.

DISTRICT'S ROLE IN JOHNSTOWN FLOOD

On July 20, 1977, a devastating flood hit the Conemaugh Valley Area. Westmoreland, Indiana and Cambria Counties were among those hardest hit. In Westmoreland County; Seward, New Florence and Bolivar suffered severe destruction.

The Conservation District was among the many agencies and units who provided relief to flood stricken areas. Stream Crews were dispatched to the flood ravaged area where they cleared and reopened the Route 56 bridge at Seward, cleaned a three block area of Seward, searched and cleaned the "bottoms" along the Conemaugh banks and assisted in many other restoration efforts.

Men from the Stream Crews had been trained under the Manpower CETA I Job Training Program. For weeks they had been removing logs, debris and brush from Westmoreland County streams. They were experienced and ready to activate when the emergency occurred. Under the direction of coordinator Elwood Leslie and project supervisor Jerry Stercho the Stream Crews made a bad situation just a little more tolerable.



FLOOD DAMAGE

SCS SERVICES FLOOD AREA

Assistance was provided to the Seward area in St. Clair Township by the Soil Conservation Service with funds made available by the Federal Disaster Assistance Administration (FDAA). This work was performed under authority of Section 216, of the Flood Control Act of 1950.

In order to dispose of backwater and mosquito nesting areas, the Soil Conservation Service was authorized to clear streams of silt and other debris deposited by receding flood waters. The major responsibility was to restore the stream as close as possible to pre-flood conditions.

EROSION AND SEDIMENTATION CONTROL REGULATIONS

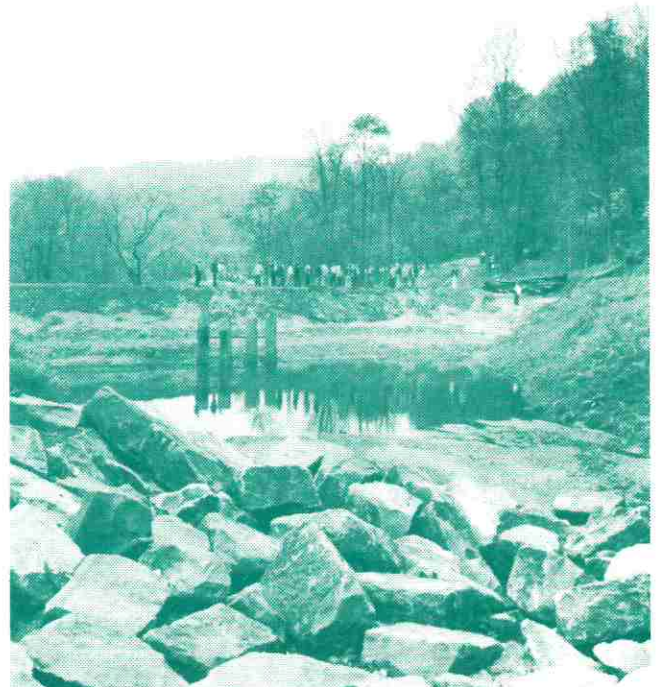
Pennsylvania's Clean Streams Law prohibits industrial or domestic discharge of any polluttional materials to the waters of the Commonwealth. Provisions are made for the DER to regulate any activity which creates a danger or has a potential for pollution.

Every earthmoving activity is required to develop, implement, and maintain a plan for the control of accelerated erosion. The plan must be kept on site and should consider the controls during activity and proper restoration after completion.

A permit is required if 25 acres or more are disturbed at one given time (12 acres in the Turtle Creek Watershed).

The Conservation District has the authority to conduct inspections, review Erosion & Sediment Control Plans and Permits, and make recommendations to the Bureau of Water Quality Management. Earthmoving activities over five acres should be reported to the Conservation District by the Municipalities in which they occur.

Erosion Control Rules and Regulations were adopted by the Environmental Quality Board September 21, 1972 (under authority of the Clean Streams Law, section 402, P.L. 1987, June 22, 1937) to control accelerated erosion and resulting sedimentation of waters, thus preventing pollution from sediment, fertilizers, and pesticides.



SEDIMENT BASIN AT WESTMORELAND MALL

AGRICULTURE COMPLIES WITH EROSION and SEDIMENT REGULATION

Farmers are required to have an Erosion and Sediment Control Plan for their farming operations. No acreage limits or permits are required for a farm. A Farm Conservation Plan is acceptable as your Erosion and Sediment Control Plan. This can be provided by the USDA, Soil Conservation Service at no cost to the farmer.

Financial assistance is available for certain long-term practices through Federal Cost-Sharing Programs administered by the USDA, Agricultural Stabilization Conservation Service (ASCS).

Your Conservation District advocates service and assistance to landowners to prevent accelerated erosion from occurring. If you are in doubt about the E&S Regulation, contact the District office.



Gilbert Hutter, Mt. Pleasant Dairy Farmer, explains the advantages of no till crop planting to reduce erosion. The group pictured participated in an Erosion Control Tour of Westmoreland County.

CONSERVATION DISTRICT ACCOMPLISHMENTS

The Westmoreland Conservation District has the administration and inspection responsibility under the Erosion Control Program. SCS is a source of technical expertise to the District. Following is a list of major items and service provided.

- 67 Erosion and Sedimentation Plans
- 17 Inventory and Evaluations
- 8 Subdivision Reviews
- 1 Highway Review
- 149 Inspections
- 33 Violations
- 86 Complaints through District
- 46 Complaints Referred to Other Agencies
- 11 Complaints Acted On with Other Agencies

CONSERVATION PLANNING MEETING

The Conservation District's Annual Planning Meeting was held at the Westmoreland County Community College. Local, county, state and civic agencies met with the district to coordinate conservation activities and decide objectives and priorities for the year.

Major Objectives are:

- Farm Plans
- Erosion and Sedimentation Control
- Storm Water Management
- Land Use Planning

Long Range Programs include:

- Flash Flood Warning System
- PL 566 Watershed Projects
- Critical Areas Inventory
- Environmental Education Laboratories
- Cooperating Agency Support
- Citizen Advisory Committees
- Loudadio Environmental Information Center
- Public Relations Program
- Conservation Education in Schools



1978 Objectives and Long Range Programs are viewed by J. Roy Houston, District Chairman; Gilbert Hutter, Director; and Ed Meyers, Penn DOT.

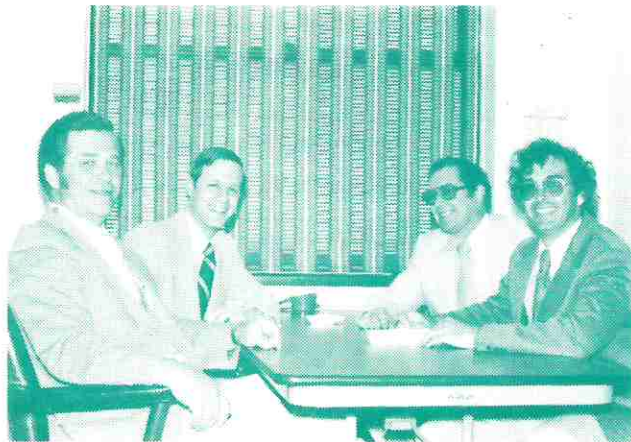
.....

The State Conservation Commission provides administrative and advisory assistance to Conservation Districts and has responsibility for administering various programs. The Commission continues to provide financial assistance in watershed development.

WATERSHED PROJECTS STATUS

The 62,500 acre Jacobs Creek Watershed is located in Southern Westmoreland and Northern Fayette Counties. The plan to control flooding in the watershed includes three dams, a channel in Scottdale, and accelerated land treatment. Two dams, the Green Lick in Fayette and Acme in Westmoreland County have been completed. Bridgeport Dam is in the planning stages.

The Bridgeport Dam will be constructed for flood storage and will control run off for up to 30% of the watershed. Westmoreland County has the responsibility for obtaining the land rights for the Bridgeport site. The coal evaluation and mine sealing study are 95% complete.



Victor Funk, State Conservation Commission presents the County Commissioners with a \$5,000 reimbursement check for administrative expenses on the Bridgeport Dam Flood Project, Jacobs Creek. Seated left to right are: Commissioner Ted Simon, Commissioner Bill Davis, District Chairman, J. Roy Houston and Victor Funk, State Commission.

LITTLE PUCKETA CREEK WATERSHED

A request for assistance under Public Law 566 Flood Control Project was jointly submitted by the municipalities within Little Pucketa Creek Watershed.

The Conservation District along with the State Commission toured the area to review the request prior to the Commissions October meeting. The request was approved by the Commission and referred to the USDA, Soil Conservation Service.

The primary objective of the Flood Control Project is to control flooding along the stream. The main damage center is in New Kensington.

STREAM PROJECTS

A county stream program was initiated by the Conservation District. The objective of the Fish Habitat program was to install jack dams, stream deflectors, and rip-rap on various county streams namely the Loyalhanna, Linn Run, Mill Creek, and Jacobs Creek.

The program was funded by Manpower and employes men and women residents of Westmoreland County. Trout Unlimited furnished material for the project which was done according to the Fish Commission guidelines.



STREAM DEFLECTORS - Located in Linn Run and Jacobs Creek.

Approximately twenty-five municipalities in Westmoreland County have applied for stream clearance in their areas through the Stream Improvement Program. Primary project targets call for removal of trees and brush blocking streams as well as built-up material at bridge pillars.

After removal of logs, debris and brush causing stream flow problems, the second priority of the program will be expansion by an increase of work crews on bank restoration. This work will be in compliance with the DER and Fish Commission regulations.

The Stream Improvement program is a joint effort of the county commissioners, the conservation district, the county planning department, and the office of Manpower. Clearing work began along streams in the eastern part of the county where spring storm damage was heavy.

DISTRICT NEWCOMERS

In 1977, Westmoreland County welcomed a new District Conservationist -- Wesley M. Gordon.

Wes directs program activities of the Soil Conservation Service. These include conservation operations, RC&D programs, PL-566 projects, and general land use planning. Erosion and Sediment Control Plans are reviewed and Inventory and Evaluations are prepared by the Soil Conservation Service staff.

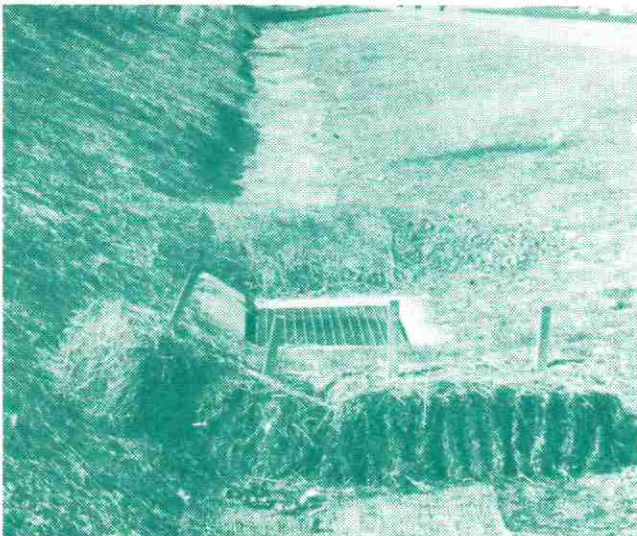
Before coming here, Wes was the District Conservationist for Somerset County. He holds a degree in Agriculture from the University of Maryland and gained experience in Lancaster, Allegheny, and Bradford counties.

Clifton Peters is a Soil Conservation Service trainee working in the Greensburg Field Office of the SCS. "Pete" earned a B.S. degree in Agriculture from Alcorn College.

Thomas A. Perrin joined the District's staff as the Environmental Control Inspector.

Tom engages in a variety of technical duties to determine the adequacy of measures being planned or implemented for erosion and sediment control within the County.

He received an Associate of Applied Sciences degree in Environmental Technology from the Westmoreland County Community College. He is certified by the Department of Environmental Resources (DER) as a Sewage Enforcement Officer.



One of the conservation practices implemented, along Rt. 119 bypass, by PennDot, in association with the SCS and Conservation District.

CONSERVATION TOUR

The Conservation District escorted some of Pennsylvania's top conservationists on a tour of Westmoreland County's erosion control and flood prevention projects.

Sites visited included: (1) Westmoreland Mall's storm water control lakes and sediment pond, (2) Youngwood's Buncher Industrial Park - Jacks Run relocation and bank stabilization, (3) Jacks Run, Hempfield Township, where debris was cleared by Manpower employees - to aid in drainage capacity, (4) Wimmerton, where community planning contains a number of erosion control measures, (5) District Director - Gilbert Hutter's Dairy farm, which employs numerous agricultural practices, and (6) Charley Bros. where Jacks Run was relocated and improved to prevent erosion.

Dr. Maurice Goddard, Secretary of the Department of Environmental Resources (DER), along with representatives from Federal, State, and Local government agencies participated in the tour.



Pictured: Roadmans Lake spillway located behind the Westmoreland Mall. One of the many sites surveyed by (from left to right): Elwood Leslie -- District's Executive Director, Wilmer (Bus) Eidmiller -- Eidmiller Enterprises, and Dr. Maurice Goddard -- Secretary of the Department of Environmental Resources (DER).

The Conservation District engages in and encourages conservation and environmental protection measures throughout the country. If assistance is needed, contact the District office. Phone: 837-5271.

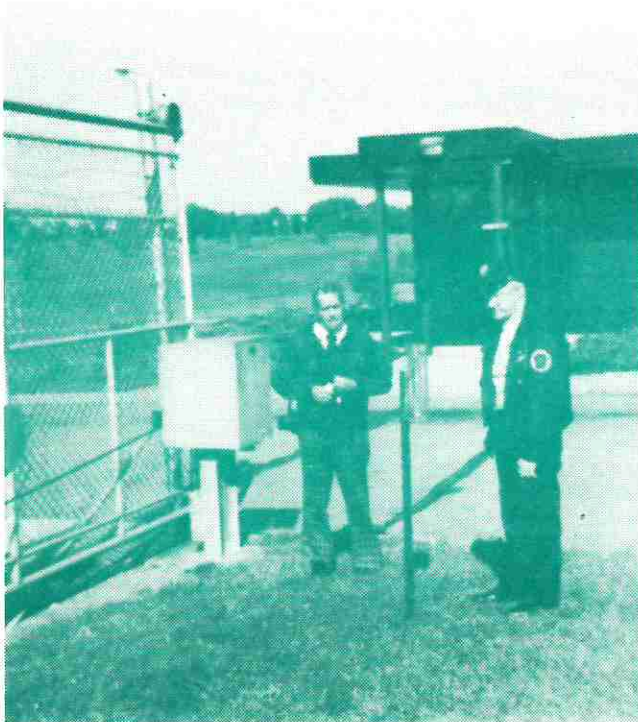
WESTMORELAND COUNTY'S FLASH FLOOD PROGRAM

A Flash Flood Warning Program was initiated by the Conservation District for Westmoreland County in 1973.

Since that time the Conservation District, with assistance from the National Weather Service, has been continually updating the system.

In the event heavy rains occur at the headwaters of Jacob's Creek, Sewickley Creek, Little Pucketa, Loyalhanna Creek, and the Arnold-New Kensington areas; a public warning will be issued to areas downstream where flooding is imminent.

A dedicated group of volunteers read the rain gauges and report above normal readings to the local 911 Emergency Center. The Center alerts the local fire companies and industries to prepare for a flash flood. The time factor enables those who will be involved to make necessary preparations to eliminate, as much as possible, the damage that is the result of flash flooding.



One of our volunteer rainfall reporting stations on the Upper Creek Watershed is being checked by District Executive Director, Elwood Leslie.

OUTSTANDING FARM COOPERATOR FOR 1977

Fred Slezak was named "Outstanding Cooperator of the Year" by the Conservation District Board of Directors. Fred owns and operates a 235+ acre farm near New Alexandria in Salem Township, with poultry being the main enterprise. He became a District cooperator in 1959 and had a farm conservation plan developed in 1964. The following practices have been applied on his farm:

Contour Strips	55 acres	1964
	30 "	1968
	30 "	1968
	72 "	1976
	<u>187 total acres</u>	
Grass Waterways	1 acre	1970
Diversions	2970 feet	1959
	2050 "	1964
Ponds	1	1968
Tile Drain	888 feet	1969
	970 "	1970
	1770 "	1964
Drop Box	1 & 2	1970

FARMLAND A NECESSITY

Agriculture has been our most basic business since the beginning of time. Farm land produces vital benefits for us all plus food and fiber. Vegetation-covered areas catch, filter, purify, and store our necessary ground water supply. Green plants alone produce our life-giving oxygen.

Farmlands near industrial and urban areas are welcome for their beauty and serenity, thus satisfying modern man's craving for some contact with nature. Many Westmoreland County farms serve as recreation areas, others provide food and shelter for wildlife.

As we plan for the future, agricultural land must be preserved not just to provide abundant food and fiber and a living for farmers, but a better quality of life for us all.

"Directory of Environmental Information"

**WESTMORELAND
CONSERVATION DISTRICT**

BOARD OF DIRECTORS

J. Roy Houston Chairman
 Frank E. Skacel Treasurer and Vice-Chairman
 Ted Simon County Commissioner Director
 William G. Buttermore Director
 Gilbert Hutter Director
 Alex J. Smith Director
 Boyd E. Wolff Director

ASSOCIATE DIRECTORS

Paul A. Heyworth	•	Dr. Wm. D. Shea
Charles DeNunzio	•	Mrs. Steven Schellin
Milan Martinisko	•	Mrs. George Shupe
Dr. Wm. H. Walker Jr.	•	Mrs. John Turnage
Mrs. Harry S. Saxman	•	Mrs. John L. Pollock

STAFF

Elwood J. Leslie Executive Director
 Marge A. Copeman Administrative Secretary
 Thomas A. Perrin Environmental Control
 Gloria J. Fox Secretary

COOPERATING AGENCIES

PENNSYLVANIA: Dept. of Environmental Resources;
 - State Conservation Commission
 - Bureau of Water Quality Mgt.
 - Community Environmental Control
 - Bureau of Forestry
 Department of Transportation
 Fish Commission
 Game Commission

UNITED STATES: Department of Agriculture;
 - Agricultural Stabilization and Conservation Service (ASCS)
 - Soil Conservation Service
 - Farmer's Home Administration
 Department of the Interior
 Department of the Army;
 - Corps of Engineers

WESTMORELAND COUNTY: Cooperative Extension Service
 Department of Planning
 Dept. of Parks and Recreation
 Vocational and Agricultural Schools

The network of cooperating agencies listed above have constructed working arrangements to cover the environment of Westmoreland County.

**WESTMORELAND
CONSERVATION DISTRICT
975 Old Salem Road
Greensburg, Pennsylvania 15601**

**1,040
SQUARE MILES
OF
OPPORTUNITY**

