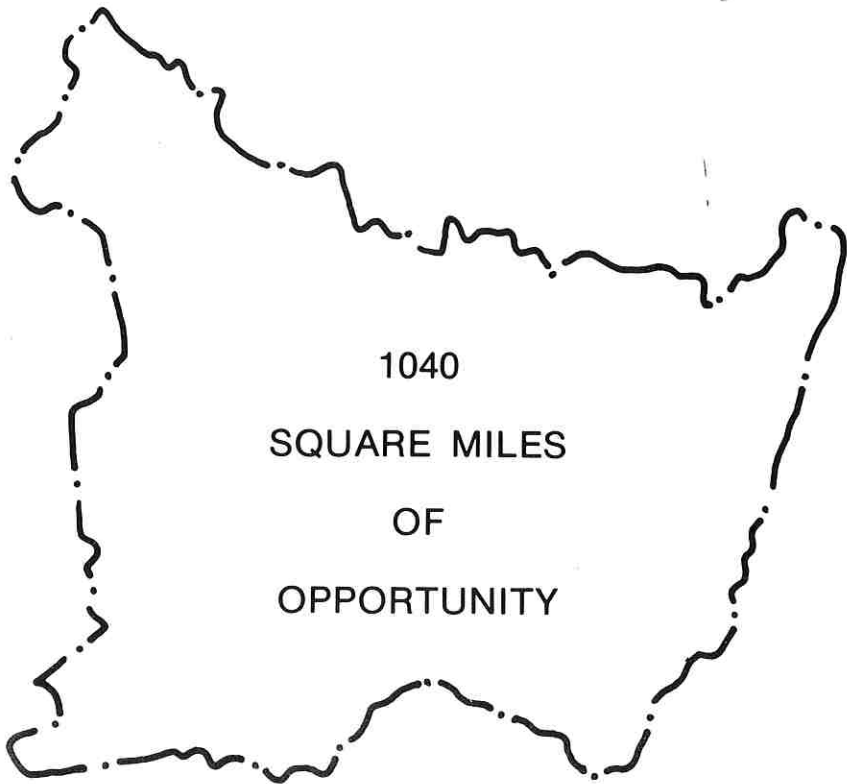


*WESTMORELAND  
CONSERVATION  
DISTRICT*

**1979 ANNUAL REPORT**



**30th ANNIVERSARY  
1949 — 1979**

**WESTMORELAND COUNTY, PENNSYLVANIA**

# WESTMORELAND CONSERVATION DISTRICT

## BOARD OF DIRECTORS

J. ROY HOUSTON ..... Chairman  
FRANK E. SKACEL ..... Treasurer & V. Chairman  
TED SIMON ..... County Commissioner, Director  
WILLIAM G. BUTTERMORE ..... Director  
GILBERT HUTTER ..... Director  
ALEX J. SMITH ..... Director  
BOYD E. WOLFF ..... Director

## ASSOCIATE DIRECTORS

PAUL A. HEYWORTH	DR. WM. D. SHEA
CHARLES DeNUNZIO	MRS. GEORGE SHUPE
MILAN MARTINISKO	MRS. JOHN TURNAGE
DR. WM. H. WALKER, JR.	MRS. JOHN L. POLLOCK
MRS. HARRY S. SAXMAN	

## STAFF

ELWOOD J. LESLIE ..... Executive Director  
MARGE A. COPEMAN ..... Administrative Secretary  
CARL R. BEABES ..... Environmental Control Officer

Assisted by the  
**STATE CONSERVATION COMMISSION**

HARRY MEYER ..... Field Representative

## U.S.D.A. SOIL CONSERVATION SERVICE

WESLEY M. GORDON ..... District Conservationist

## **Purpose of the WESTMORELAND CONSERVATION DISTRICT**

Westmoreland Conservation District is charged with the responsibility for coordinating conservation activities within our county. In this role the District is empowered to work with Federal, State, County and Civic Agencies in the promotion of conservation. The State Conservation Commission provides administrative, advisory, and financial assistance to Conservation Districts.

### **ASSISTANCE PROVIDED**

Conservation Planning for Farms, Woodland and Wildlife  
Watershed Protection  
County Flash Flood Warning System  
Conservation Technical and Planning Assistance  
Erosion and Sediment Control  
Storm Water Management  
Rural Abandoned Mine Program (RAMP)  
Resource Conservation & Development (RC & D)  
Solid Waste & Sewage Effluent Disposal  
Outdoor Recreation Development  
Soil Survey  
Developers Planning Assistance  
Municipal Planning Assistance

We recognize that three of our basic purposes are to help assure Westmoreland County of adequate water supplies, the land capability to produce adequate supplies of food and fiber, and the continuing protection of our streams and rivers against pollution.

---

Conservation District meetings are held at 8 p.m. the fourth Wednesday of each month and are open to the public.

**WESTMORELAND'S CONSERVATION TEAM**

**COMMONWEALTH OF PENNSYLVANIA**

**DEPARTMENT OF ENVIRONMENTAL RESOURCES**

Bureau of Community Environmental Control  
Bureau of Forestry  
Bureau of Water Quality Management  
State Conservation Commission

**DEPARTMENT OF TRANSPORTATION**

FISH COMMISSION  
GAME COMMISSION

**UNITED STATES**

**DEPARTMENT OF AGRICULTURE**

Agriculture Stabilization & Conservation Service  
Farmers Home Administration  
Soil Conservation Service

**DEPARTMENT OF THE ARMY**  
Corps of Engineers

**DEPARTMENT OF THE INTERIOR**

**WESTMORELAND COUNTY**

**COOPERATIVE EXTENSION SERVICE**

**DEPARTMENT OF EMERGENCY MANAGEMENT**

**DEPARTMENT OF PARKS & RECREATION**

**DEPARTMENT OF PLANNING**

**VOCATIONAL & AGRICULTURAL SCHOOLS**

The network of the teams listed have constructed working arrangements to cover the environment of Westmoreland County.

## CONSERVATION SERVICES TO WESTMORELAND COUNTY

The Conservation District engages in and encourages conservation and environmental protection measures throughout the county. The Soil Conservation Service provides technical assistance to the District and residents of Westmoreland County. A summary of major services by Soil Conservation Service and the Conservation District include:

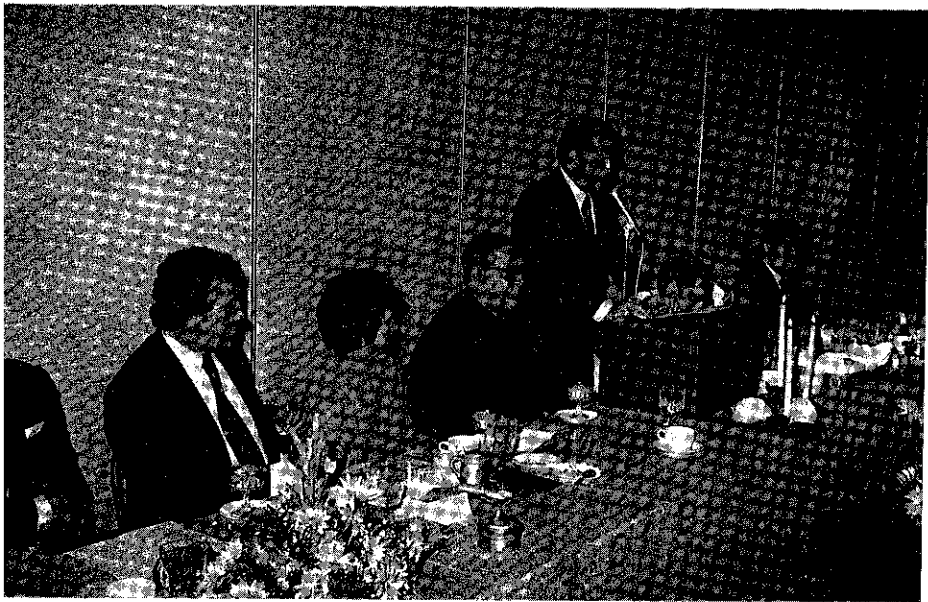
<u>Number of Items</u>	<u>Services Provided</u>
1,345	Total District Cooperators
14,028 Ac.	Conservation Plans Completed
487	Services to Individuals
578 Ac.	Conservation Plans Revised
106	Erosion and Sediment Plans Reviewed
45	Inventories and Evaluations
137	Site Inspections and Complaints Investigated
43	Violations - Erosion & Sediment
1,086	Received Technical Services
1	Sewage Sludge Demonstration
881 Ac.	Stripcropping Systems Established
12	Critical Area Planting Sites
12,425 Ft.	Subsurface Drains
8 Ac.	Grassed Waterways
11,315 Ft.	Diversions
12	Spring Developments
1	RC&D Project completed, Goehring Park, W. Newton

### SEMINAR INVOLVEMENT

- District Relationship with Municipal Officials
- Storm Water Management
- Erosion and Sedimentation Control
- Resource Conservation Act
- Rural Abandoned Mine Program
- Preservation of Prime Agriculture Land
- 208 Water Quality Management

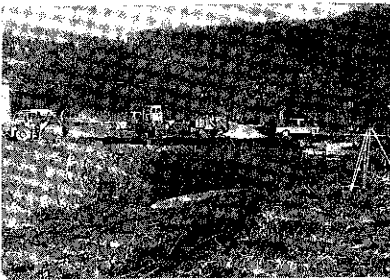
**32nd**  
**JOINT ANNUAL CONFERENCE**  
**WESTMORELAND CONSERVATION DISTRICT**  
**30th ANNIVERSARY BANQUET**

The Westmoreland Conservation District hosted the Joint Annual Conference of the State Conservation Commission and the PA. Association of Conservation District Directors, Inc. at the Sheraton Inn. Three hundred members throughout the state attended the conference. The Conservation District celebrated its 30th Anniversary with a banquet honoring the occasion. Cooperating agencies & state and federal representatives were recognized for their contributions to conservation in Westmoreland County.



Ted Simon, Chairman, Westmoreland County Board of Commissioners welcomes the many guests who attended the Conservation District's 30th Anniversary Banquet. Pictured left to right are: Senator James R. Kelley, Commissioner Robert Miller, Mrs. Miller, Father Firmin Beyer, Commissioner Ted Simon, J. Roy Houston, Elwood J. Leslie, Congressman Don Bailey.

Mother Agnes and Sister Mary Benedict from St. Emma's Convent belong to a dedicated group of volunteers who read rain gauges and report readings to the local 911 Emergency Center. A public warning is issued to areas downstream when flooding is imminent.



The RAMP project administered by SCS is assisting landowners reclaim abandoned coal mined lands in Westmoreland County. Some 45 property owners wishing to participate in RAMP signed up with SCS early in '79. Reclamation plans have been completed on three sites and earthmoving is scheduled to begin in Mammoth County Park this year. A local reclamation committee has been formed in Westmoreland County to obtain recommendations on program operations and evaluate applications for reclamation assistance.

This headline after flash flooding hit Westmoreland County demonstrates how a storm water detention pond can control storm water. As a result of urging by Hempfield Twp. Supervisors and the Conservation District, the Goodman Co. of Allentown designed a water detention pond which many feel benefited the whole valley below the Westmoreland Mall during a flash flood in '79.

**Mall Dry-Dam  
'Saved Valley'**

By JEFF FRASER  
Tribune-Review Staff Writer

A retention pond built at the foot of Westmoreland Mall two years ago may have been a life saver when flash floods hit parts of Westmoreland County Sunday.

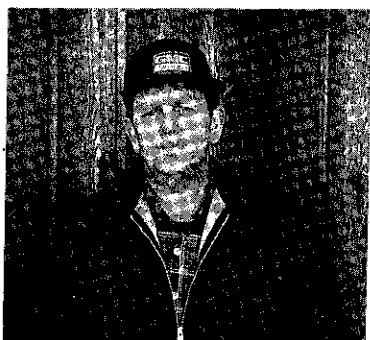
"I still feel that without that dry pond, the whole valley would have been washed out," said Jim Laffey, who coordinated relief efforts in Westmoreland County following the flooding.

Concurring was Elwood Leslie, executive director of the Conservation District, who...

## FEDERAL & STATE FUNDS CONTRIBUTED TO WESTMORELAND COUNTY FOR CONSERVATION

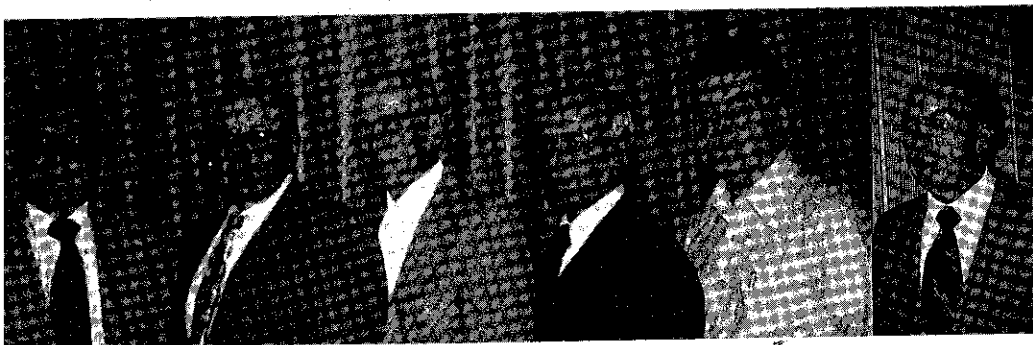
\$60,292.00	SCS — USDA, Soil Conservation Service
95,275.00	ASCS — Agriculture Stabilization & Conservation Service
35,554.00	RC&D — Resource Conservation and Development
40,000.00	WCD — Cash Flow into County Economy Resulting from Joint Annual Convention
5,000.00	DER — Department of Environmental Resources
12,226.25	DER — Jacobs Creek Administrative Costs
6,265.20	SCS — Jacobs Creek Relocation Costs
1,160.00	DER — RCA Grant
<hr/>	
\$255,772.45	TOTAL FUNDS RECEIVED

## OUTSTANDING FARM COOPERATORS



John Greenawalt (*left above*) was named "Outstanding Farm Cooperator of the Year" by the Conservation District's Board of Directors. Wilmer A. Pore (*right above*) was named "Landowner Assistant Cooperator of the Year." Greenawalt owns and operates a 296 acre poultry farm in Sewickley Township in addition to the farm owned by Wilmer Pore. This honored award is bestowed on the farm cooperators who have applied superior conservation practices.





## THE CONSERVATION DISTRICT BOARD OF DIRECTORS

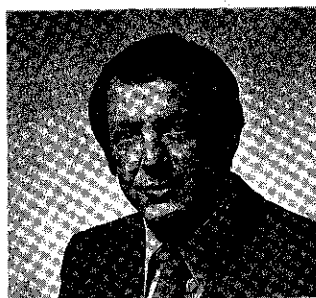
*Above, left to right are:*

**J. Roy Houston, Frank E. Skacel, William G. Buttermore,  
Gilbert Hutter, Alex Smith and Boyd Wolff**

The Conservation District is administered by a duly appointed Board of Directors composed of four farmer directors, two urban directors and one County Commissioner director.



**Ted Simon**



**John R. Regoli**



**Robert H. Miller**

We express our appreciation to the Westmoreland County Commissioners who contributed greatly to the District's progress, not only through financial support, but through sincere interest and encouragement in carrying out programs to wisely use and conserve our natural resources in Westmoreland County.

**WESTMORELAND  
CONSERVATION DISTRICT**

975 Old Salem Road  
Greensburg, PA 15601