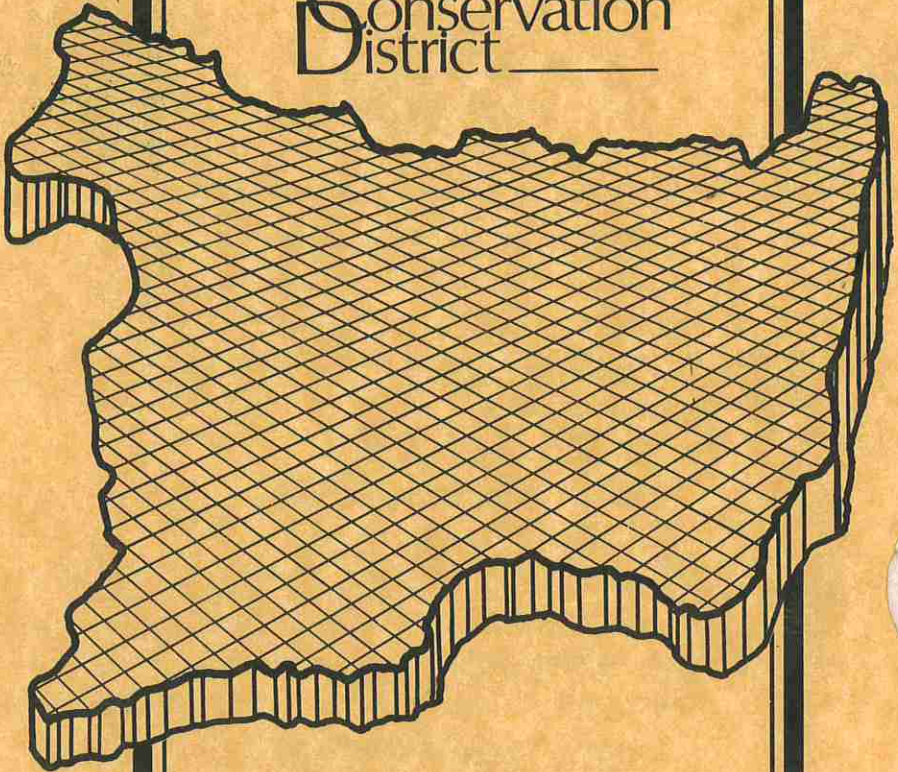


Westmoreland
Conservation
District



1040

SQUARE MILES OF OPPORTUNITY

1983 ANNUAL REPORT

WESTMORELAND COUNTY, PENNSYLVANIA



PENNSYLVANIA CONSTITUTION

“The People have a right to clean air, pure water, and to the preservation of the natural, scenic, historic and esthetic values of the environment.

Pennsylvania’s public natural resources are the common property of all the people, including generations yet to come. As trustees of these resources, the Commonwealth shall conserve and maintain them for the benefit of all the people.”

Section 27, Article 1

YOU’VE GOT A FRIEND IN PENNSYLVANIA



WESTMORELAND CONSERVATION DISTRICT BOARD OF DIRECTORS

- J. ROY HOUSTON CHAIRMAN
- GILBERT HUTTER VICE CHAIRMAN
- FRANK E. SKACEL TREASURER
- BOYD E. WOLFF SECRETARY
- WILLIAM G. BUTTERMORE DIRECTOR
- ALEX J. SMITH DIRECTOR
- TED SIMON, COUNTY COMMISSIONER DIRECTOR

ASSOCIATE DIRECTORS

- | | |
|----------------------|----------------------|
| PAUL A. HEYWORTH | HANK TRICE |
| MRS. HARRY S. SAXMAN | FRANK SKACEL, JR. |
| KEITH WALTERS | RALPH FRYE, JR. |
| ROY KEMERER | CHARLES DENUNZIO |
| ED CZARNECKI | MRS. JOHN L. POLLOCK |
| MRS. GEORGE SHUPE | MRS. JOHN TURNAGE |
| DR. WILLIAM D. SHEA | |

STAFF

- ELWOOD J. LESLIE DISTRICT MANAGER
- LINCOLN ARMBRUST ADMINISTRATIVE SECRETARY
- GREGORY M. PHILLIPS ENVIRONMENTAL CONTROL OFFICER
- KATHLEEN A. ALLISON SECRETARY

WESTMORELAND COUNTY BOARD OF COMMISSIONERS

- TED SIMON
- ROBERT H. MILLER
- JOHN R. REGOLI

Assisted by the

STATE CONSERVATION COMMISSION
BUREAU OF SOIL AND WATER CONSERVATION

- HARRY T. MEYER FIELD REPRESENTATIVE
- SAMUEL LIVINGSTON SOILS ENGINEER

U.S.D.A. SOIL CONSERVATION SERVICE

- WESLEY M. GORDON DISTRICT CONSERVATIONIST



**WESTMORELAND'S
CONSERVATION TEAM
COMMONWEALTH OF PENNSYLVANIA**

DEPARTMENT OF ENVIRONMENTAL RESOURCES

Bureau of Soil and Water Conservation

Bureau of Community Environmental Control

Bureau of Forestry

Bureau of Surface Mine Reclamation

Bureau of Water Quality Management

State Conservation Commission

DEPARTMENT OF TRANSPORTATION

PA. FISH COMMISSION

PA. GAME COMMISSION

FEDERAL

DEPARTMENT OF AGRICULTURE

Agriculture Stabilization & Conservation Service

Farmer's Home Administration

Soil Conservation Service

DEPARTMENT OF THE ARMY

Corps of Engineer

DEPARTMENT OF THE INTERIOR

WESTMORELAND COUNTY

Cooperative Extension Service

Department of Emergency Management

Department of Parks & Recreation

Department of Planning

Vocational & Agriculture Schools

Loyalhanna Watershed Association

Turtle Creek Watershed Association

The network of the teams listed have constructed working arrangements
to cover the environment of Westmoreland County.



PURPOSE OF THE WESTMORELAND CONSERVATION DISTRICT

The Westmoreland Conservation District is a legal subdivision of state government responsible under state law for coordinating conservation activities within County boundaries. The State Conservation Commission provides administrative, advisory and financial assistance to Conservation Districts.

The purpose of district are: to focus attention on land, water, and related resource problems; to develop programs to solve them; to enlist and coordinate help from all public and private sources that can contribute to accomplishing the district goals, and to make all citizens aware of the interrelationship between human activities and the natural environment.

We recognize that three of our basic purposes are to help assure Westmoreland County of adequate water supplies, the land capability to produce adequate supplies of food and fiber, and the continuing protection of our streams and rivers against pollution.

ASSISTANCE PROVIDED

Conservation Planning
Application of Conservation Practices
Watershed Management
County Flash Flood Warning System
Erosion and Sediment Control
Storm Water Management
Rural Abandoned Mine Program (RAMP)
Resource Conservation & Development (RC&D)
Solid Waste & Sewage Effluent Disposal
Soil Survey
Developers Planning Assistance
Municipal Planning Assistance
Agricultural Land Preservation
Conservation Education

Conservation District meetings are held at 8 p.m., the fourth Wednesday of each month and are open to the public. The District Office is located at 932 St. Clair Way, Route 30 East, Greensburg, Pa. 15601. The District meetings are held at the Peoples Natural Gas Co., Donohoe Rd., Greensburg, Pa. 15601.



CONSERVATION SERVICES TO WESTMORELAND COUNTY

The Westmoreland Conservation District encourages the application of conservation practices and environmental protection measures throughout the county. The U.S.D.A. Soil Conservation Service (S.C.S.) provides technical assistance to the District and to residents of Westmoreland County.

THE FOLLOWING IS A SUMMARY OF THE MAJOR SERVICES AND CONSERVATION PRACTICES ESTABLISHED WITH S.C.S. ASSISTANCE DURING 1983:

New Cooperators requested Conservation District assistance	18
Individual landusers were provided assistance	352
Landusers applied one or more conservation practice	234
Feet of diversion were constructed	22,280
Acres of waterway were constructed	7
Feet of subsurface drains were installed	56,660
Acres of stripcropping were established	697
Spring developments were installed	15
Pond requests serviced	25
Acres of Conservation plans revised	2,629
Approximate acres of land were benefited by soil & erosion practices	4,526
Landuse plans were reviewed for adequacy of soil erosion and sedimentation control	125

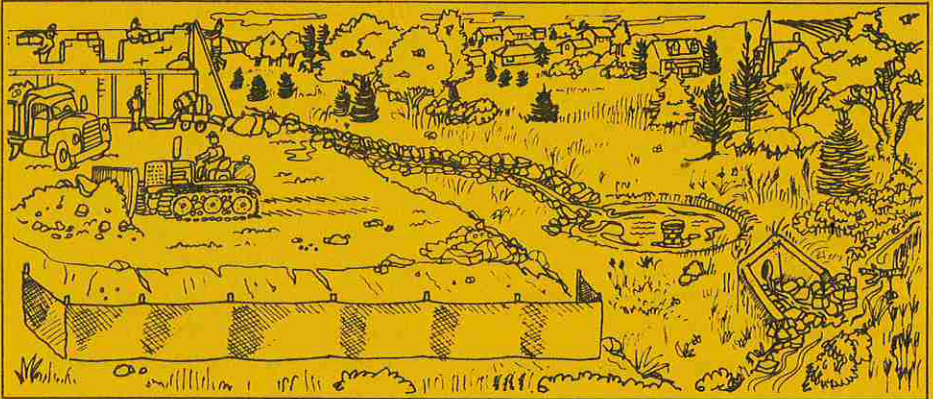
Technical assistance to landusers resulted in the application of various agronomic practices designed to reduce soil erosion.



Factories need enormous amounts of water to produce some goods. For instance, it takes 60,000 gallons of water to make a ton of steel.



SOIL EROSION AND SEDIMENTATION CONTROL PROGRAM



The Westmoreland Conservation District continued to emphasize administration of the erosion and sedimentation control program in 1983. During the year the District fulfilled its responsibilities by receiving and responding to erosion and sedimentation complaints, assessing problems in the field and working with landowners and/or earthmovers to obtain compliance.

The Department of Environmental Resources (DER), Bureau of Soil and Water Conservation is responsible for Pennsylvania's soil and water conservation programs and provides assistance as well as funding to Conservation Districts. The Pennsylvania General Assembly, through the DER, made available \$250,000.00 in conservation district manager cost-sharing for the 1982-1983 fiscal year. The Westmoreland

Conservation District utilized \$7,236.72 of these funds.

Assistance and guidance to the Westmoreland Conservation District and liaison with DER and other State and Federal Agencies was provided through the services of Field Representative Harry Meyer. This assistance included advising the District Board and assisting and training district staff.

The Harrisburg staff of the Bureau of Soil and Water Conservation provided assistance to the district in special program or problem areas. In addition, Soils Engineer Sam Livingston provided technical erosion and sedimentation control training and guidance to district staff, reviewed erosion and sedimentation control plans for Earth Disturbance Permits and plans related to surface mining activities.



SOIL EROSION AND SEDIMENTATION CONTROL EVALUATION

In November of 1982 the Westmoreland Conservation District entered into an agreement with the Department of Environmental Resources (DER) that obligated the District to prepare and submit a comprehensive evaluation of the effectiveness of DER's soil erosion and sedimentation control program as administered by the Westmoreland Conservation District.

The evaluation consisted of both an internal review of District policies and procedures and site evaluations of active earthmoving sites within Westmoreland County. The internal review analyzed the organization structure and the program management procedures of the District's soil erosion and sedimentation control program. Past earth disturbance permits, complaints, enforcement activities and the effectiveness of complaint handling and compliance procedures were reviewed as part of the internal evaluation.

Field evaluations examined all types of land uses involving earthmoving. Both agricultural and non-agricultural earthmoving operations were evaluated. The soil erosion and

sedimentation control evaluation determined how well erosion control plans are being prepared and reviewed and the extent to which facilities and practices are being implemented on-site. Eighteen agricultural sites and eighteen non-agricultural sites (stripmines, landfills, residential development, commercial development, gas wells and timber harvesting) were analyzed by an evaluation team organized by the Westmoreland Conservation District. The evaluation team included representatives from government agencies and private organizations which are affected by soil erosion control regulations.

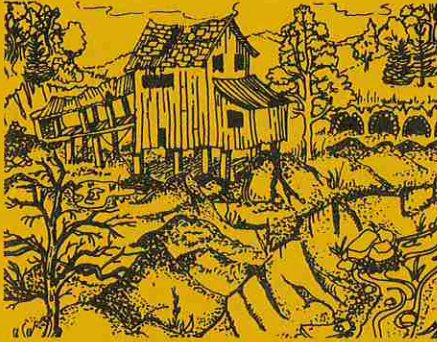
The evaluation included general background information, soils information, population projections, distribution and densities.

The portions of Westmoreland County that are experiencing rapid land development and the municipalities that have the potential to develop in the future were examined.

Ultimately, the evaluation identified soil erosion and sedimentation control program deficiencies and offered recommendations that will improve upon current operating procedures.



THE RURAL ABANDONED MINE PROGRAM (RAMP)



The Surface Mining Control and Reclamation Act of 1977 authorized the Secretary of Agriculture to establish the RAMP Program. The Soil Conservation Service (SCS) administers and will help participants develop reclamation plans for their land and offer them long-term cost sharing to put these plans to work.

People who own or control non-federal land that has been mined for coal may be eligible for cost sharing. To qualify areas must have been abandoned before August 3, 1977, and left unreclaimed or inadequately reclaimed.

Top consideration will be given to areas exhibiting extreme danger to public health, safety, property and general welfare. Also considered for funding at this time are areas which have adverse effects on public health, safety, and welfare. Sites where reclamation will restore the environment and soil and water resources are eligible and may be funded later in this program.

In 1983, the Westmoreland Conservation District assisted with the preparation of a grant request to obtain funds for additional reclamation work. In excess of \$200,000 funding was successfully secured for RAMP projects in Westmoreland County.

The following RAMP sites were completed in 1983:

- Reclamation of a priority one RAMP site in Salem Township near the community of Highland. Work consisted of regrading a hazardous highwall, installing surface water controls and establishing a permanent vegetative cover.
- Reclamation of a priority one RAMP site in Hempfield Township near the community of Darragh. An old deep mine shaft was excavated, closed and permanent vegetation was established.



RESOURCE CONSERVATION AND DEVELOPMENT (RC&D)

RC&D areas are authorized through the United States Department of Agriculture (USDA) to provide local units of government technical and financial help in conserving and using their natural resources. The USDA also helps those groups sponsoring RC&D areas seek funds and services from federal, state and local sources.

RC&D areas are locally organized, sponsored and directed. Each RC&D area is administered by an executive council that is composed of county government and county conservation district representatives.

In Southwestern Pennsylvania, Allegheny, Armstrong, Beaver, Butler, Fayette, Greene, Indiana, Washington and Westmoreland Counties comprise the Penn's Corner RC&D area.

Westmoreland County has been an active participant in the formation and operation of the multi-county Penn's Corner RC&D area since its inception in October 1972. Elwood Leslie of the Westmoreland Conservation District currently serves as Chairman of the Penn's Corner RC&D Executive Council. The Westmoreland Conservation District Board of Directors and staff maintains a leadership role in promoting the RC&D program, seeking funding and co-sponsoring project measures.

The following statistics consist of a brief summation of project measures in Westmoreland County which have received technical and financial assistance through the RC&D program in 1983:

FUNDED MEASURES COMPLETED DURING 1983	COST	LOCATION
Penn Twp. Community Park	\$22,110	Harrison City
MEASURES UNDER CONSTRUCTION		
North Huntingdon Twp. (Phase 1)	\$52,734	Three Sites
MEASURES WITH FUNDING COMMITTEE		
Westmoreland Co. Parks (Phase 11)	\$14,100	Northmoreland Park
MEASURES WAITING FOR FUNDING		
Hempfield Parks & Rec. Comm. (Phase 1)	\$9,440	Hempfield Township
MEASURES WITH SIGNED MEASURE PLANS		
North Huntingdon Twp. (Phase 11)	\$119,350	Five Sites
Westmoreland Co. Roadbank Stabilization	\$ 6,065	Two Locations



SPRING TREE SEEDLING SALE

Conservation Districts have recently established seedling sales as a means to supplement the various sources of funding needed to operate the District. In April of 1983, the Westmoreland Conservation District initiated the first annual spring seedling sale. Public participation was excellent, resulting in over 10,000 seedlings being sold at a cash value of \$5,607.34.

The Westmoreland Conservation District will again conduct a spring seedling sale in April of 1984. The

District invites all property owners, businesses, civic, church, youth groups and others to beautify Westmoreland County and to improve our environment by buying and planting seedling trees.

All orders must be submitted to the Westmoreland Conservation District Office by April 7, 1984. Orders will be accepted on a first come, first serve basis. All seedlings offered for sale are certified nursery stock.

SPECIES

COLORADO BLUE SPRUCE

EASTERN WHITE PINE

AUSTRIAN PINE

CANADIAN HEMLOCK

AMERICAN ARBORVITAE

RED OAK

PINE OAK

SUGAR MAPLE

NORWAY MAPLE

SILVER MAPLE

CHINESE CHESTNUT

SIZE COST PER UNIT OF 10

8"-15" \$4.00

8"-14" 4.00

8"-16" 4.00

6"-12" 4.50

5"-10" 4.50

12"-18" 6.00

12"-24" 4.50

10"-18" 4.00

18"-24" 5.50

12"-18" 5.50

12"-18" 6.00

Order forms can be obtained by calling the Conservation District Office at 837-5271.



The tallest tree in the world is as high as a 36-story building. The tree? The coast redwood of California and Oregon.



EVERYONE BENEFITS BY PLANTING TREES

TREES WORK FOR YOU BY:

- *Stabilizing soil movement*
- *Filtering the air*
- *Cooling your home and community*
- *Controlling ground water flow*
- *Providing lumber and other wood products*
- *Adding beauty to your property*
- *Providing homes & food for birds and animals*
- *Growing wood fiber on land that would otherwise be idle and nonproductive*
- *Being part of "open spaces"*
- *Buffering excessive noise*

ANNUAL PLANNING MEETING

The Inn America, located in New Stanton, Pa., was the setting for the Westmoreland Conservation District's 1983 Annual Planning Meeting. The purpose of this meeting is to review the year's accomplishments and to obtain input relative to objectives for the coming year.

Attending the meeting were District Staff, Directors, Associate Directors

and various federal, state and county representatives. The many organizations and agencies responsible for soil and water conservation, landuse planning, watershed protection and flood prevention have been most cooperative and helpful in assisting the District in preparing programs and emphasizing priorities.

PROJECTED PRIORITIES FOR 1984

CONSERVATION PLANNING

EROSION AND SEDIMENTATION CONTROL

RAMP (RURAL ABANDONED MINE PROGRAM)

and BOND FORFEITURE

STORMWATER MANAGEMENT

RC&D (RESOURCE CONSERVATION & DEVELOPMENT)

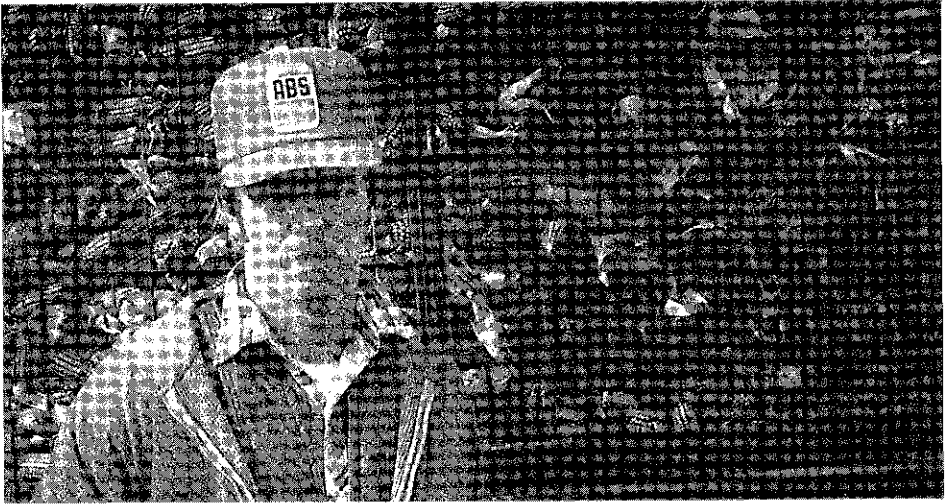
FLASH FLOOD PROGRAM

PUBLIC RELATIONS

ENERGY CONSERVATION



Outstanding Cooperator Of The YEAR



Ralph Frye, Jr. has been selected as Outstanding District Cooperator for 1983 by the Westmoreland Conservation District Board of Directors. The award is presented annually to the District Cooperator who displays excellent soil and water conservation management.

Ralph, who grew up on his father's farm near Beatty Crossroads in Unity Township, now manages a dairy operation near Pleasant Unity. Four individual farms comprising approximately 350 acres are leased to Ralph. Over 280 acres were cultivated in 1983.

Originally signed as District Cooperator in 1978, Ralph entered into

a 3-year long term agreement in 1980. Some of the conservation practices implemented by Ralph include: a conservation cropping system, contour stripcropping, crop residue management, grassed waterways, pasture management, spring developments and woodland management. Ralph plans to construct a manure storage structure and install tile drainage in the near future.

The Westmoreland Conservation District congratulates Ralph Frye, Jr. for his fine achievements in soil and water conservation!

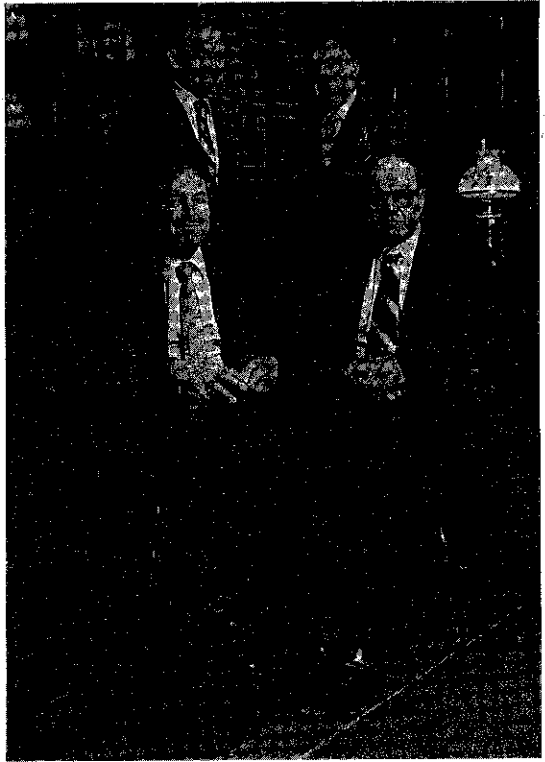


THE WESTMORELAND CONSERVATION DISTRICT BOARD OF DIRECTORS

The Conservation District is administered by a duly appointed Board of Directors composed of four farmer directors, two urban directors and one County Commissioner director.

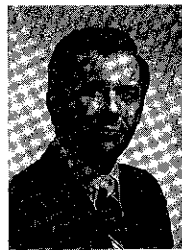
Standing left to right: William G. Buttermore, Alex J. Smith.

Seated left to right: J. Roy Houston, *chairman*, Frank E. Skacel, *treasurer*; *absent from photo:* Boyd E. Wolff, *secretary*, Gilbert Hutter, *vice chairman*.

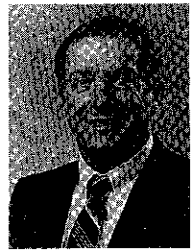


THE WESTMORELAND COUNTY COMMISSIONERS

We express our appreciation to the Westmoreland County Commissioners who contributed greatly to the District's progress, not only through financial support, but through sincere interest and encouragement in carrying out programs to wisely use and conserve our natural resources in Westmoreland County.



Ted Simon



John R. Regoli



Robert H. Miller



WESTMORELAND COUNTY CONSERVATION DISTRICT 1984 OBJECTIVE COMMITTEES

CONSERVATION PLANNING

BOYD WOLFF

EROSION & SEDIMENT CONTROL

GILBERT HITTER

RAMP & BOND FORFEITURE

ALEX SMITH

STORM WATER MANAGEMENT

FRANK SKACEL

RESOURCE CONSERVATION & DEVELOPMENT

J. ROY HOUSTON

FLASH FLOOD PROGRAM

ALEX SMITH

PUBLIC RELATIONS

J. ROY HOUSTON

ENERGY CONSERVATION

WM. BUTTERMORE

TREE SALES

ALEX SMITH

AGENCY BREAKFAST

Since 1981 the Westmoreland Conservation District has promoted an informal agency breakfast. The breakfast get-together serves to stimulate communications between the various governmental agencies and private organizations operating in Westmoreland County.

The breakfast is scheduled for 7:30 a.m. on the second Tuesday of each month at the Lord Ligonier Inn, located in Ligonier, Pa.

Representatives of the following agencies attended the monthly breakfast:

Bureau of Forestry

Loyalhanna Watershed Association

Soil Conservation Service

Pennsylvania Game Commission

Bureau of Surface Mine Reclamation

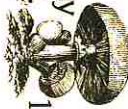
Division of Oil & Gas

Westmoreland Conservation District

Pennsylvania Fish Commission

Westmoreland Bioservation District

932 St. Clair Way
Greensburg, Pa. 15601



As you take a seemingly solitary stroll in a typical one-acre field, you may be watched by as many as 40 million ants, beetles, wasps and other insects. The eyes of 100 mice, a squirrel, some rabbits, a few songbirds and maybe a hawk circling overhead might also be watching you.

