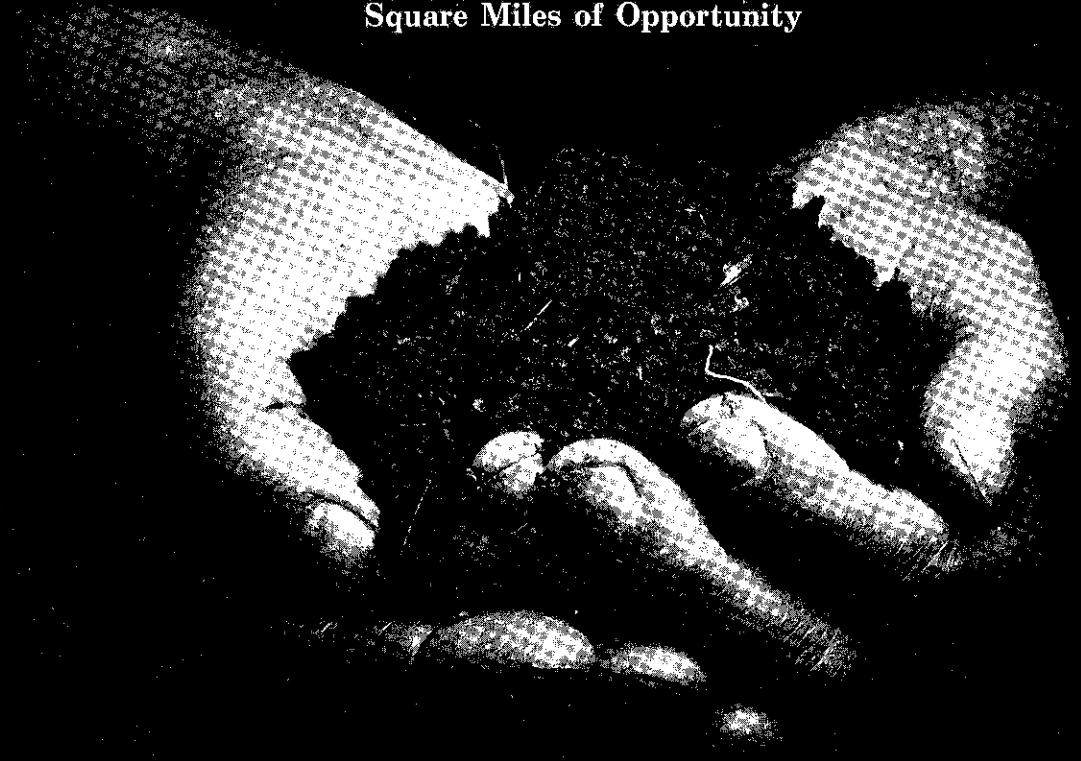


Westmoreland
Conservation
District

Westmoreland County, Pennsylvania

1040

Square Miles of Opportunity



ANNUAL REPORT 1985

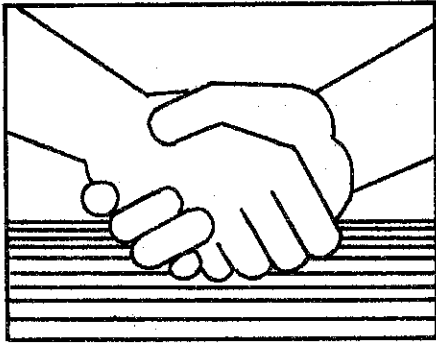
"The Land's in Your Hands"

The Purpose of The Westmoreland Conservation District is to Serve

The Westmoreland Conservation District is a legal subdivision of state government responsible under state law for coordinating conservation activities within County boundaries. The State Conservation Commission provides administrative, advisory, and financial assistance to Conservation Districts.

The purpose of districts are: to focus attention on land, water, and related resource problems; to develop programs to solve them; to enlist and coordinate help from all public and private sources that can contribute to accomplishing the district goals; and to make all citizens aware of the interrelationship between human activities and the natural environment.

We recognize that three of our basic purposes are to help assure Westmoreland County of adequate water supplies, the land capability to produce adequate supplies of food and fiber, and the continued protection of our streams and rivers against pollution.



Call us at 837-5271 for information on:

- Conservation Planning
- Application of Conservation Practices
- Watershed Management
- County Flash Flood Warning System
- Soil Erosion and Sediment Control
- Stormwater Management
- Rural Abandoned Mine Program (RAMP)
- Resource Conservation & Development (RC&D)
- Soil Survey
- Developers and Municipal Planning Assistance
- Agricultural Land Preservation
- Landowner Reclamation
- Conservation Education



Board of Directors

J. Roy Houston, *Chairman*
Gilbert Hutter, *Vice Chairman*
Frank Skacel, *Treasurer*
Boyd E. Wolff, *Secretary*
William Buttermore, *Director*
Alex J. Smith, *Director*
Ted Simon, *Commissioner*
Director

Associate Directors

Paul Heyworth
Mrs. Harry S. Saxman
Roy Kemerer
Dr. William Shea
Ed Czarnecki
Mrs. George Shupe

Staff

Gregory M. Phillips, *District Manager*
Lincoln Armbrust, *Administrative Secretary*
Anthony Quadro, *Environmental Control Officer*
Kathleen A. Allison, *Secretary*

Westmoreland County Board of Commissioners

Ted Simon Robert H. Miller
Richard Vidmer

Assisted By

State Conservation Commission
Bureau of Soil and Water Conservation
Harry T. Meyer, *Field Representative*
Samuel Livingston, *Soils Engineer*
U.S.D.A. Soil Conservation Service
Wesley M. Gordon, *District Conservationist*

Westmoreland's



Conservation Team

Commonwealth of Pennsylvania

Department of Environmental Resources
Bureau of Soil and Water Conservation
Bureau of Community Environmental Control
Bureau of Forestry
Bureau of Surface Mine Reclamation

Bureau of Oil and Gas Management
State Conservation Commission
Department of Transportation
PA. Fish Commission
PA. Game Commission

Federal

Department of Agriculture
Agriculture Stabilization and Conservation Service
Farmer's Home Administration
Soil Conservation Service
Department of the Army
Corps of Engineer
Department of the Interior

Westmoreland County

Cooperative Extension Service
Department of Emergency Management
Department of Parks and Recreation
Department of Planning Vocational and Agricultural Schools
Loyalhanna Watershed Association
Turtle Creek Watershed Association
Jacobs Creek Watershed Association

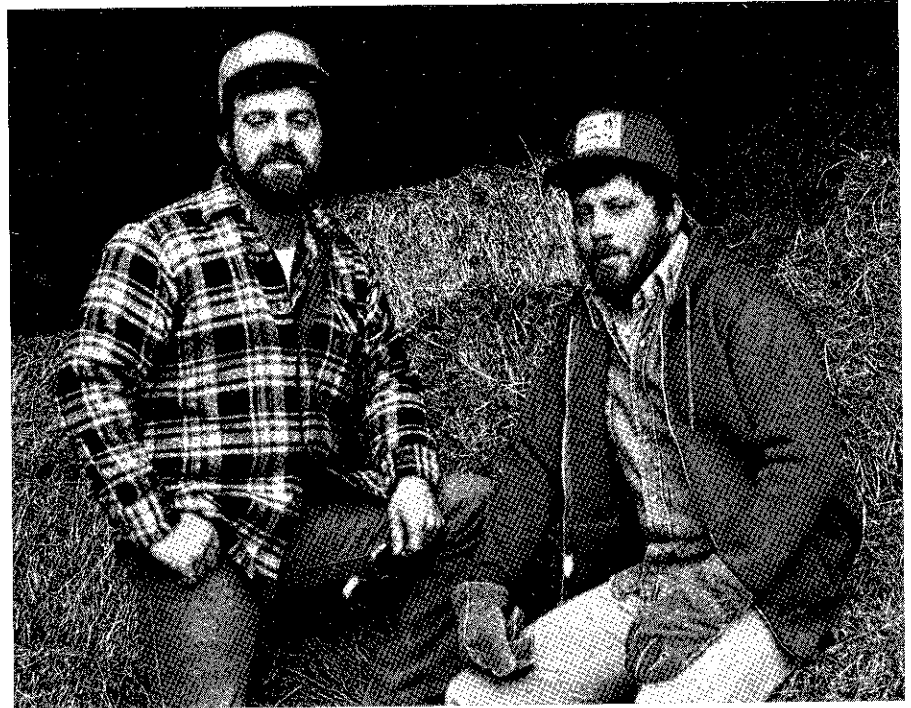
Board Selects Outstanding Conservation Farmers

Bill and Rick Ebert were named Westmoreland County's Outstanding Conservation Farmers by the District's Board of Directors in 1985. As recipients of the award the Ebert's are recognized for their achievements in soil and water conservation. The Ebert's operate a 220 acre dairy farm in Derry Township and also farm 305 acres of rented land.

Some of the conservation practices implemented by the Ebert's include; contour stripcropping, subsurface drainage, spring developments, erosion control structures, and agricultural waste management.

The Ebert's are graduates of Penn State University. Bill has an associate degree in Farm Business and Rick has a bachelor of Science degree in Dairy Science.

The Westmoreland Conservation District congratulates the Eberts for their conservation achievements!



1985 Outstanding Farmers: Left Rick Ebert Right Bill Ebert

Westmoreland Conservation District Roster of Outstanding Conservation Farmers:

- | | |
|--|---|
| 1984 - Ed and Max Sapinsky,
<i>Smithton</i> | 1978 - Donald Hutter, <i>Mt.
Pleasant</i> |
| 1983 - Ralph Frye, <i>Latrobe</i> | 1977 - Fred Slezak, <i>New
Alexandria</i> |
| 1982 - The Schramms, <i>Harrison
City</i> | 1976 - John R. Wigle, <i>Latrobe</i> |
| 1981 - James Schenick, <i>Scottdale</i> | 1975 - Boyd Wolff, <i>New
Alexandria</i> |
| 1980 - Welty Keenan, <i>Hunker</i> | 1972 - Jess Stairs, <i>Acme</i> |
| 1979 - John Greenawalt, <i>West
Newton</i> | |

District Reducing Soil Erosion

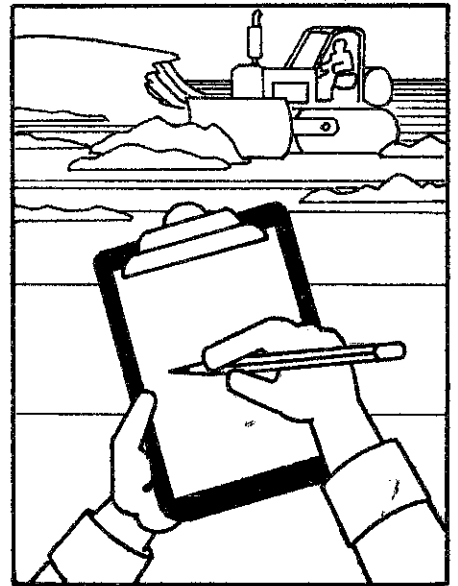
The Westmoreland Conservation District continued to emphasize the administration of the soil erosion and sedimentation control program in 1985. District personnel reviewed erosion and sedimentation (E&S) control plans, responded to E&S complaints, assessed problems in the field, and worked with landowners, contractors, and engineers to obtain compliance.

The Pennsylvania General Assembly, by way of the Department of Environmental Resources (DER), made available \$750,000 to Districts in the 1984-85 fiscal year. The Westmoreland Conservation District utilized \$19,000 of these funds. Of this total, \$10,000 was provided as cost sharing for the employment of the District Manager, \$8,000 for the Technician, and \$1,000 in Administrative Assistance.

The DER, Bureau of Soil and Water Conservation (BSWC) provided technical training to the District in the form of a two week course in Erosion and Sedimentation Control. Professors from the Pennsylvania State University Agronomy and Engineering Departments prepared the course. This training gave the District a greater ability to review E&S plans and an increased capacity for evaluating on-site controls.

Over the past several years, the number of erosion and sedimentation plans submitted for review has increased. During 1985, the District, with assistance from the Soil Conservation Service (SCS) has reviewed 177 plans. Earth disturbance permits were required on four of the sites that were in excess of 25 acres. The District investigated 28 E&S complaints, only five of which were referred to other agencies.

Over 50 sites have been inspected with the total of inspections numbering 180. On nearly all inspected sites, compliance with erosion control law has been voluntary. However, on two sites, enforcement actions were necessary. With the help of the (BSWC) personnel, \$2,500.00 was collected in penalty payments from these sites.



With the increase in numbers of plans and the Districts' increased technical capacity for plan reviews and inspections, the role of the District in the State's erosion and sedimentation control program has become of greater importance. With the help of the SCS and DER field personnel, the Westmoreland Conservation District will continue to help assure Westmoreland County of adequate water supplies, and the protection of our streams and rivers against pollution.

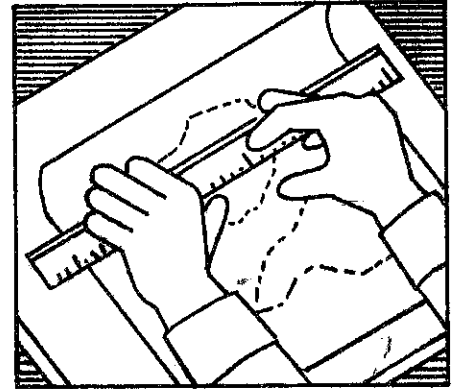
Resource Conservation and Development (RC&D) is "Conservation at the Grassroots"

The United States Department of Agriculture (USDA) is authorized through the Food and Agriculture Act of 1962 to provide local units of governmental technical and financial help in conserving and using their natural resources. The USDA also helps those groups sponsoring RC&D areas seek funds and services from federal, state and local sources.

RC&D areas are locally organized, sponsored and directed. Allegheny, Beaver, Butler, Fayette, Greene, Indiana, Washington, and Westmoreland

Counties comprise the Penn's Corner RC&D area. Penn's Corner is administered by an executive council that is composed of county government and conservation district representatives.

The following statistics consist of a brief summation of project measures in Westmoreland County which have received technical and financial assistance through the RC&D program from 1978 to 1985:



Projects Completed	Year	Sponsor	RC&D Share*	Total Cost
Twin Lakes Park	1978	Westmoreland Co.	\$ 41,857	\$ 83,714
Goehring Park	1979	West Newton Boro	17,777	35,904
Newhouse Park	1980	Delmont Boro	2,742	4,495
Mammoth Park	1981	Westmoreland Co.	27,255	45,436
West. Co. Parks (I) (Twin Lakes Park) (Cedar Creek Park) (Northmoreland Park)		Westmoreland Co.	14,756	19,096
Penn Twp. Park	1983	Penn Township	17,689	22,111
West. Co. Parks (II)	1984	Westmoreland Co.	9,510	14,100
North Huntingdon (I)	1985	N. Huntingdon Twp.	34,706	49,705
Hempfield Parks (I)	1985	Hempfield Twp.	6,965	9,286
			<hr/>	<hr/>
			\$173,257	\$283,847

*Does not include technical assistance provided by SCS.

Soil Conservation Service (SCS) Benefits Landowners

The Westmoreland Conservation District promotes the application of sound soil and water conservation management practices. Technical assistance is provided to the District by the United States Department of Agriculture, SCS.

As a result of this interagency cooperation the conservation needs of landowners, farmers and developers are served.

The following presents a brief summary of the major services and conservation practices established with SCS assistance in 1985.

- Individual landusers provided assistance.....385
- Landusers applying one or more conservation practice.....220
- Acreage of conservation plans prepared and/or revised.....3,900
- Acreage of stripcropping established.....1,035
- Spring developments installed.....18
- Grass & rocklined waterway acreage constructed.....10
- Linear feet of diversion constructed.....14,000
- Soil erosion & sedimentation control plans reviewed.....160
- Agricultural Conservation Program referrals serviced.....112
- Pond requests serviced.....25
- Assistance provided to governmental units.....28

In addition, SCS

- Provided technical assistance, as requested, for erosion and sedimentation control and surface water disposal on active surface mine reclamation sites.
- Assisted the Westmoreland Conservation District with on-site investigation of soil erosion and stormwater related problems.
- Supplied soil survey information upon request.
- Provided technical assistance to landusers that resulted in various applications of agronomic practices to reduce soil erosion. These included: conservation cropping systems, conservation tillage, pasture and hayland management, and planned grazing systems.
- Assisted farmers with planning of manure management systems.

Agricultural Stabilization Conservation Service (ASCS) Shares Conservation Costs

Often the solutions to agricultural conservation problems cost more than farmers can afford to spend. Many conservation practices bring little or no return to agricultural landowners, or benefit them only after a long time. By sharing costs and benefits both public and private interests are served.

Congress authorizes funds for the Agricultural Conservation Program (ACP) as the public's share of an investment in conservation work needed in the public interest. This program is administered through county offices of ASCS. Local farmer-elected committees function within each county to assess local conservation problems and determine which measures should be offered to landowners in their area to solve these problems. Technical assistance on practices is provided by the Soil Conservation Service.

County programs are developed from a list of national practices with cost-sharing rates and priorities based on local need. Special projects can be offered to treat unique problems. Long-term agreements with farmers provide guaranteed funding for 3 to 10 years.

Projects Utilize Rural Abandoned Mine Program (RAMP) Funding in 1985

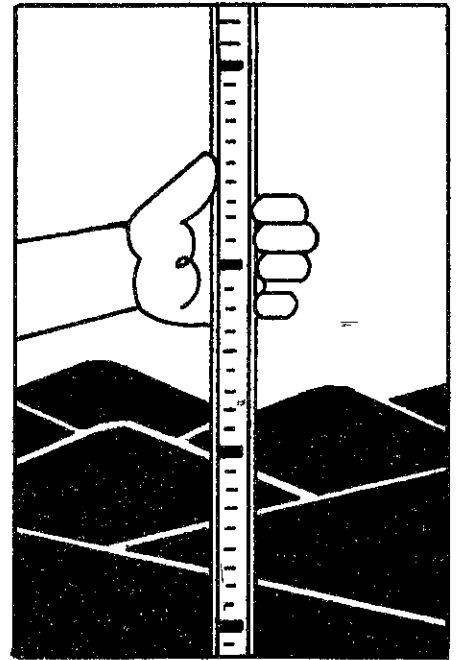
The Surface Mining Control and Reclamation Act of 1977 authorized the Secretary of Agriculture to establish the RAMP Program. The Soil Conservation Service (SCS) administers and helps participants develop reclamation plans for their land. Long-term cost sharing is offered to implement the plans.

People who own or control non-federal land that has been mined for coal may be eligible for cost sharing. To qualify, areas must have been abandoned before August 3, 1977, and left unreclaimed or inadequately reclaimed. Top consideration is given to areas exhibiting extreme danger to public health, safety, property, and general welfare. Also considered for funding at this time are areas which have adverse effects on public health, safety, and welfare.

RAMP 1985

Completed the reclamation of five priority one RAMP sites. Reclamation consisted of regrading coal waste and coke waste piles, razing of deteriorated coke ovens, structure removal and closing of mine entrances. At each site surface water controls were installed and permanent vegetation established. Conservation practices include: rock lined waterways, diversions, subsurface drains, together with the permanent grass and legume seeding. Two sites had trees and shrubs planted for wildlife diversification.

Site	Location	Acres
Zundel	Unity	31
Radomski	Hempfield	7
Chendy	Ligonier	6
Sasso-Lenhart	Hempfield	14
Heidekat	Murrysville	1



Landowner Reclamation Program

The Board of Directors signed an agreement with the Department of Environmental Resources to participate in the Landowner Reclamation Program. The program permits a limited number of landowners to use bond forfeiture funds to reclaim abandoned mine land on their property. Several property owners in Westmoreland County have indicated an interest to participate in the program.

Coalition Strives for Funds

The Western Pennsylvania Coalition for Abandoned Mine Reclamation (WPCAMR) is an organization of volunteers concerned with the reclamation of abandoned mined land. Presently, the coalition consists of 23 member counties representing Western Pennsylvania.

The general purpose of the organization is to provide local leadership for encouraging the reclamation, development, and wise use of abandoned mine lands in the bituminous coal area of Western Pennsylvania. This includes: reducing the hazards to health and safety, eliminating soil erosion, and improving the local economy of the region.

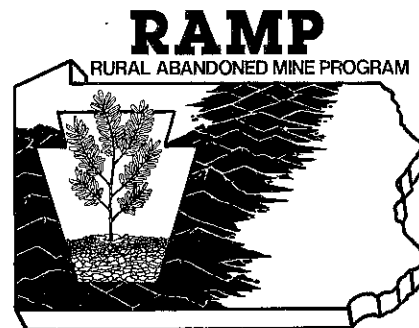
Coalition Activities During 1985

- Developed, printed, and distributed a WPCAMR brochure.
- Sponsored a public hearing "Status of Abandoned Mine Reclamation".
- Conducted a joint tour and meeting with members of the state Rural Abandoned Mine Program committee.
- Made contact with other states in an attempt to form an Appalachian Coalition.
- Prepared and presented testimony before the House of Representatives, Interior and Appropriations Committees.
- Lobbied Representatives and Senators and met with aids to Secretary to John Block.
- Maintained association with various national conservation groups such as Environmental Policy Institute and the Sierra Club.

The WPCAMR welcomes concerned citizens to join in the effort to obtain increased funding for abandoned mine reclamation. For more information contact the Westmoreland Conservation District.

1985 WPCAMR Officials

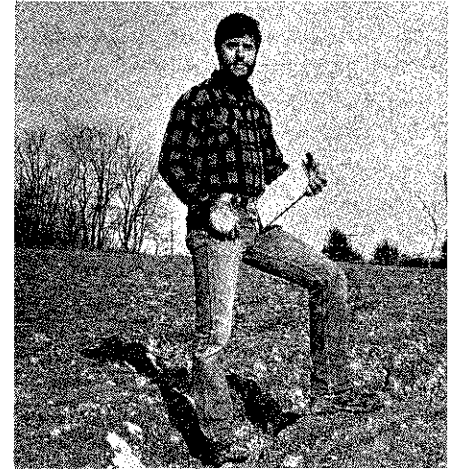
Chairman	Dave Mankamer	Somerset County
Vice Chairman	Gary Lee Krause	Elk County
Treasurer	Roby Grose	Jefferson County
Secretary	Bob Sweitzer	Somerset County



Westmoreland Conservation District Staff



Greg Phillips - District Manager, carries out the administrative responsibilities of the Conservation District office as delegated by the Board of Directors. Greg's work includes coordinating conservation programs with private landowners, related agencies, and government officials.



Tony Quadro - Environmental Control Officer, In February of 1985 the District hired Tony to fill the vacant Environmental Control Officer position. Some of his duties include: evaluating soil erosion and sedimentation control plans, inspecting active earth-moving sites, and responding to a wide variety of environmental complaints.

Tony is a graduate of both Penn State University and the State University of New York at Syracuse. He has a B.S. degree in Forest Science and M.S. in Silviculture. Before joining the District staff he was employed as a forester for Pennsylvania Gas and Water Co., a land manager for a large nature center, and as a forester for a local timber harvester.

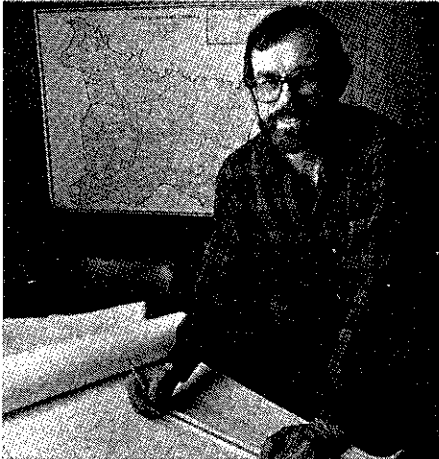


Lincoln Armbrust - Administrative Secretary, Originally hired as a secretary in 1979, she is now serving as the District's Administrative Secretary. Primarily responsible for the District's accounting, bookkeeping and payroll, Lincoln also prepares financial reports, types, files, and assists the District Manager with many of his duties.



Kathy Allison - Secretary, handles the District's and the Soil Conservation Service's clerical matters. In addition to typing correspondence, farm plans and Erosion and Sedimentation Control Plans, Kathy also performs a variety of other office related duties, including operating the new District computer.

United States Department of Agriculture Soil Conservation Service (SCS)



Wesley Gordon

Wesley Gordon, District Conservationist, directs operations at the SCS Westmoreland County field office in Greensburg,

Wes assists individuals, organizations and governmental units with the development and application of soil and water conservation plans and practices. He also regularly confers with the Westmoreland Conservation District Board of Directors to address local conservation problems and concerns.

In addition to serving on the Loyahanna Watershed Association Board of Directors, Wes is also active with the Keystone Chapter of the Soil Conservation Society of America.



Joe Obenski

Joe Obenski and Larry Stokum, Soil Technicians, assist landowners with the layout and installation of conservation practices.

Larry schedules visits to confer with landowners to encourage and arrange for proper maintenance of established practices and for the implementation of additional practices.

Joe supervises installation of conservation practices and serves as government inspector and surveyor on Resource Conservation and Development and Rural Abandoned Mine Projects.

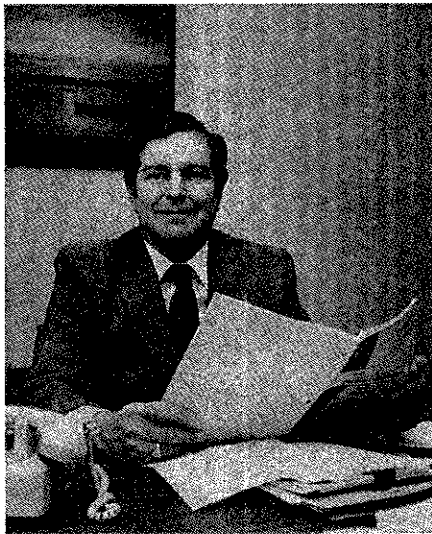


Left: Larry Stokum, right Carl Beabes

Carl Beabes, Soil Conservationist, assists the District Conservationist with his duties and serves as the principal conservation planner in the SCS field office.

Carl makes initial contact with landowners as a result of their request for assistance. In addition to working with individuals reviewing and explaining conservation plans, practices and application techniques, Carl also helps with the layout, installation and maintenance of conservation practices.

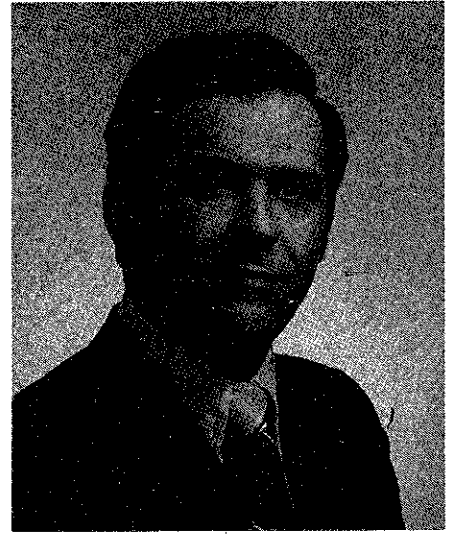
Meet The Board of Directors



**J. Roy Houston, Chairman,
Murrysville**



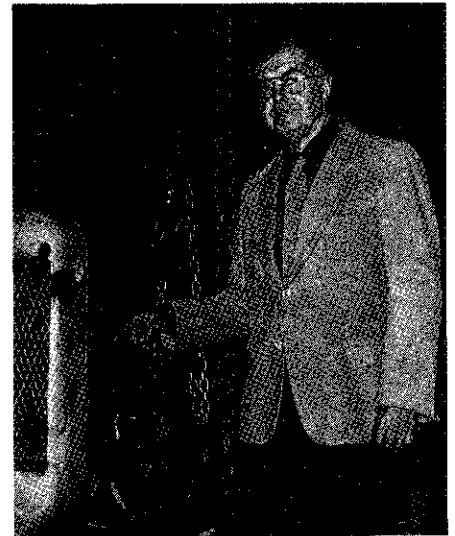
**Gilbert Hutter, Vice Chairman,
Mt. Pleasant**



**Ted Simon, County
Commissioner, Director**



**Boyd E. Wolff, Secretary,
New Alexandria**



**Alex J. Smith, Director,
Greensburg**



**Frank E. Skacel, Treasurer,
Derry**

District Board Meets Monthly

The Westmoreland Conservation District is administered by a duly appointed Board of Directors. The Board is composed of four farmer directors, two urban directors, and one County Commissioner. The Board convenes at least once a month to plan, prioritize, and supervise the implementation of district programs.

The general public is encouraged to attend and participate in our meetings.

Regular monthly district meetings are scheduled to begin at 8:00 p.m. on the fourth Wednesday of each month (Watch the newspaper meeting notices). They are held at the Peoples Natural Gas Company which is located one mile north of the Westmoreland Mall on Donohoe Road near Greensburg.



**William Buttermore, Director,
Mt. Pleasant**



Richard Vidmer



Ted Simon



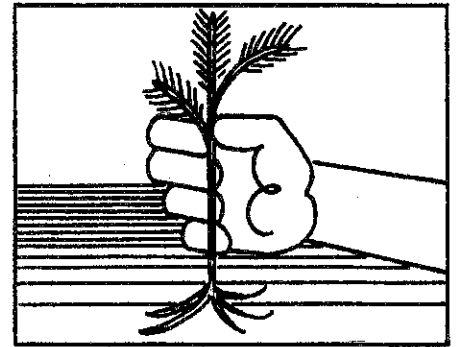
Robert H. Miller

Thank You Westmoreland County Commissioners

We express our appreciation of the Westmoreland County Commissioners who contributed greatly to the District's progress, not only through financial support, but through sincere interest and encouragement.

1985 Progress Retrospect:

- A Conservation Luncheon in observance of the 50th Anniversary of Americas' soil and water conservation movement was held in March. Ed and Max Shapinsky of Smithton, winners of the 1984 Outstanding Farm Cooperator award, were recognized at the event.
- A unique "Conservation Planning" display was conceived and constructed for exhibition at various events. The display was designed to improve public awareness of conservation and initiate cooperators sign-ups. An artfully painted farm scene illustrates: contour stripcropping, grassed waterways, spring developments, conservation tillage, and woodland and pasture management.
- Youth forestry camp is a four day program which introduces students to the basic principals of forest management. Each year the district provides a scholarship to eligible students based on the results of a contest. Charles Tantlinger, of Bolivar, attended the 1985 session at Penn State's Stone Valley Camp.
- During 1985, the District worked cooperatively with the Pennsylvania Bureau of Forestry. Assistance was provided to the State Service Forester in woodland management planning and the Tree Farm inspection program. Several county landowners were given advice on tree planning, pest management, and timber harvesting.
- The District provided assistance on stormwater management and continued to participate with the County in the Flash Flood Warning Program. Stormwater management plans were analyzed and evaluated. Post-flood damages are assessed and advice was provided for repair and stabilization.
- The District continued to assist landowners with stream encroachment permits in cooperation with the Pennsylvania Department of Environmental Resource, Bureau of Dams and Waterways Management. Information was provided on permits for: streambank stabilization, bridges, fords, culverts, fills, channel changes, and fish enhancement structures.
- Recent amendments to Act 217, commonly referred to as the Conservation District Law, provide for conservation district board expansion under certain circumstances. As required, approval for the Westmoreland Conservation District Board to expand was obtained from the County Commissioners and the state Conservation Commission. In January 1987, the District Board will increase from seven to nine members.



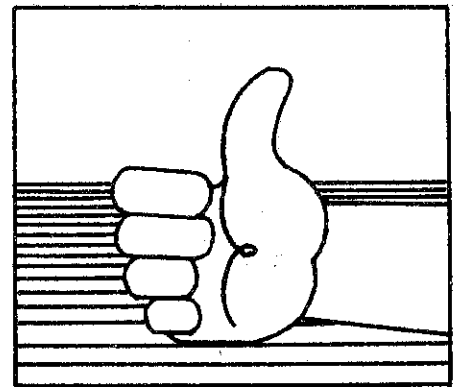
Seedlings Become Soil Savers

Thanks to the PA Game Commission and the Washington County Conservation District we received 25,000 seedlings to distribute in 1985. All of the seedlings were delivered free of charge and used as wildlife habitate plantings. Although some of the seedlings were given to private property owners most of them were donated to the Westmoreland County Parks, the Bureau of Forestry, the Army Corps of Engineers, and the Greensburg Sportsmens Club.

Likewise, thanks to the Consolidated Gas Transmission Company's donation of grass seed the District was able to distribute free grass seed. Approximately 2000 pounds of Kentucky-31 grass seed was given to various municipalities, landowners and county agencies.

District Sets Priorities for 1986

- Continue to assign a high priority to the *Soil Erosion and Sedimentation Control Program*.
- The Board of Directors approved the publication of the *District Newsletter*. It will be printed quarterly and distributed to district cooperators, youth organizations, sportsmens clubs, municipalities, etc.
- A back-to-the-basics approach to *conservation planning*. The District will be intensifying efforts to identify and assist landowners who can benefit from the implementation of conservation plans.
- The Districts' *Long Range Plan*, or outline of programs and policies is scheduled to be updated. Administration of the Districts' Soil Erosion and Sedimentation Control Program and the protection of ground water resources are some of the topics to be included in the plan.
- Purchase and program a *computer* for District/Soil Conservation Service use.
- Continue to support and utilize the *Rural Abandoned Mine Program* and Penn's Corner *Resource Conservation and Development*.
- Continue to assist the Department of Emergency Management with the operation of the *Flash Flood Program*. Reaffirm the value of rainfall observers through personal contacts.





932 St. Clair Way
Greensburg, PA 15601

