


Westmoreland Conservation District



DIRECTIONS FOR THE 90'S

1990 Westmoreland Conservation District

ANNUAL REPORT

Landmarks Newsletter
Spring, 1991 Inside

Westmoreland Conservation District

**"Directions For The 90's"
is both a plan for the
State Conservation
Commission and
Pennsylvania's
Conservation Districts
and is also the theme for
Our 1990 Annual Report.**

Who We Are...

The Westmoreland Conservation District is a public organization created under state enabling law as a special-purpose district to develop and carry out a program of soil, water, and related resource conservation, use and development within Westmoreland County.

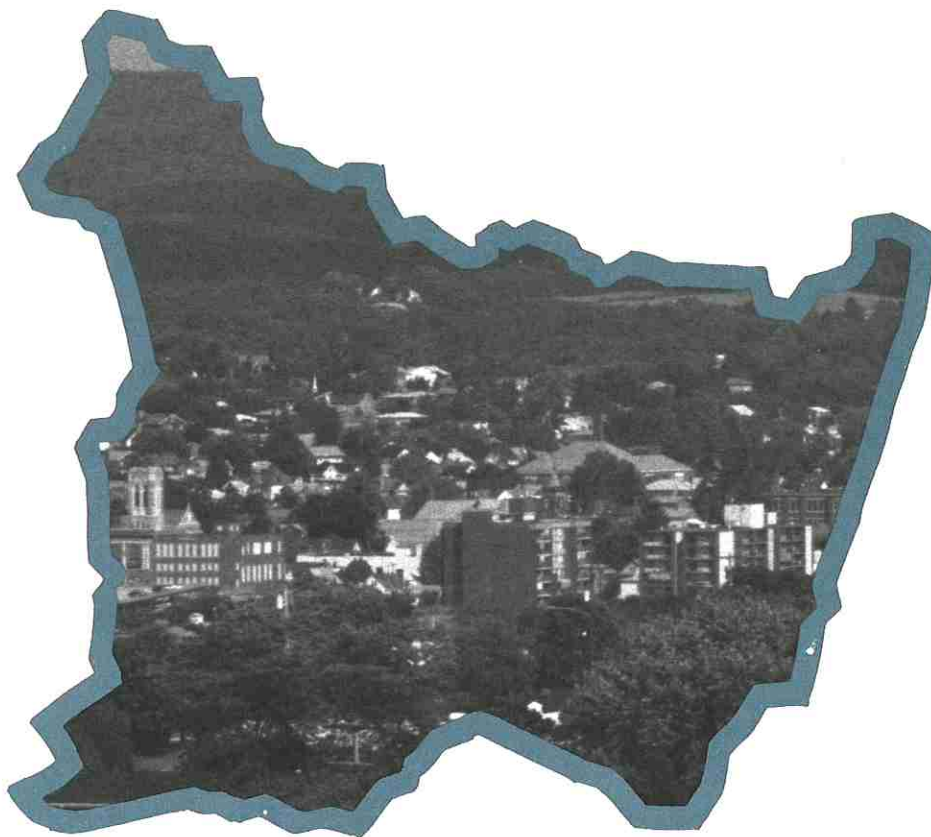
What We Do...

The purpose of the District is: to focus attention on land, water, and related resource problems; to develop programs to solve them; to enlist and coordinate help from all public and private sources that can contribute to accomplishing the district goals; and to make all citizens aware of the inter-relationship between human activities and the natural environment.

**We Can Be Reached
at 837-5271**

Our Programs...

- Westmoreland County Envirothon
- Leaf/Yard Waste Composting
- Woodland Management
- Stormwater Management
- Rural Abandoned Mine Program
- Landowner Reclamation Program
- Westmoreland County Soil Survey
- Westmoreland Woodlands Association
- Resource Conservation & Development
- Soil Erosion and Sedimentation Control
- Agricultural Conservation Planning & Application
- Western Pennsylvania Coalition for Abandoned Mine Reclamation
- Farmland Preservation
- PA Conservation Partnership
- Conservation Education



An excerpt from the State Conservation Commission's Direction for the 90's Executive Summary Report.

"At the close of the 1980s, Pennsylvania's conservation districts were among the most diverse and capable in the nation. The modern conservation district must administer programs and discharge obligations beyond those demanded of districts a few years ago. By managing a broad spectrum of conservation programs serving agricultural and non-agricultural interests, conservation districts have proven themselves to be effective conservators of Pennsylvania's natural resources.

Arthur A. Davis
Secretary
Department of Environmental
Resources

District Helps to Emphasize Forestry Programs

Conservation Districts have the responsibility at the local level for planning, coordinating, and executing programs to help meet the conservation needs of soil, water, forest, and other related resources on all lands within their districts. According to the National Association of Conservation Districts, local districts in the northeast and northcentral regions of the U.S. will see their involvement in forestry issues intensify in the '90s. The Westmoreland Conservation District's involvement in forestry programs has already seen increased growth through 1990. Some of the accomplishments are as follows:

- Continued to work with the Westmoreland Woodlands Association providing technical advice, direction, and identification of important issues for future discussion.
- Distributed over 7000 seedlings for wildlife habitat improvement and stabilization.
- Provided technical advice on gypsy moth suppression and helped implement the Westmoreland County spray program.
- Held a workshop for loggers on silviculture and erosion control.
- Provided woodland management plans to several forest land owners in the county. These plans consisted of maps and written recommendations to help landowners meet their management objectives. Plans were developed for over 500 acres of forestland.

- A workshop was sponsored for woodland owners, along with Penn State University, PA Bureau of Forestry, PA Forestry Association, and the Westmoreland Woodlands Association. This workshop provided information on forest management, regeneration, and improvement, along with forestry incentive programs and assistance.

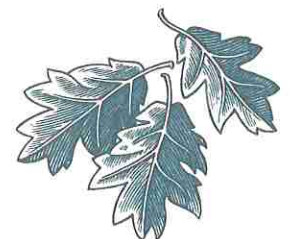
In 1991, the Westmoreland Conservation District Board of Directors sees the need to elevate forestry assistance to full program status. The future looks bright for forests.



Composting Plans Progress

In 1990, the Leaf Composting Program continued to progress. The District's Compost Recycling Committee (CRC) was formed in 1988 to initiate yard waste recycling on a local level. The CRC presented a report to the Westmoreland County Department of Planning for use in updating the County's Soil Waste Management Plan. The District then distributed composting information to County municipalities, and provided technical assistance to potential commercial leaf composting operations. Presentations on composting were provided to the State Conservation Commission, Central Westmoreland Council of Governments, and the Westmoreland County Borough Association.

The District helped PA CleanWays organize a successful Christmas Tree Recycling program, which we hope will be an annual event. A municipal leaf mulching demonstration project is planned for 1991 by farmers to enhance soil quality. There also have been plans to organize "neighborhood composting experts". Through these steps, we hope to introduce compost as a valuable resource for backyard, agricultural, municipal and commercial use.



Food Security Act Dominates Soil Conservation Service Workload

The purpose of the Soil Conservation Service (SCS) is to provide technical assistance to landusers in the planning and installation of soil and water conservation practices. The primary focus of this activity during 1990 was assisting agriculture procedures in complying with conservation provisions of the Food Security Act (1985). In Westmoreland County the SCS has assisted with the planning and certification of over 40,000 acres of cropland to keep farmers eligible for U.S. Department of Agriculture benefits.

One of the main cropland conservation practices in Westmoreland County is contour stripcropping systems. During 1990 the Greensburg Field Office marked out and assisted with the application of 1288 acres of contour strips. These strips are often visible as bands of alternate crops that appear on the landscape in contrasting crop colors. Another practice is constructing diversions across the slope to intercept and safely convey runoff water to a non-erosive outlet. The field office assisted in installation of 8250 feet of permanent diversions on cropland during 1990. Technical assistance was also provided for planning and installing spring developments, grass waterways, subsurface

drains, and structures for water control. We also assisted in planning several intensive grazing systems for sheep, beef and dairy farmers.

In cooperation with the Westmoreland Conservation District, the Resource Conservation & Development (RC&D) program was utilized to obtain critical funding for the Pennsylvania Conservation Partnership, a water quality information program, and the leaf composting effort.

Through the Rural Abandoned Mine Program (RAMP), the SCS continued reclamation of hazardous rural sites affected by past mining activity. Construction at one site was completed in 1990 and planning for several others continued. The Greensburg Office has been successful in completing 15 sites throughout Westmoreland County since the program began in 1979.

In 1990, Soil Conservation Service took an active role in the cooperative effort to begin planned actions towards farmland preservation. As an important step in overall planning for growth management, the SCS is interested in continuing to work with interested local individuals to preserve farmland.

**One of the main
cropland conservation
practices in
Westmoreland
County is contour
stripcropping
systems.**

Agricultural Stabilization and Conservation Service (ASCS) Reports

An agency of the U.S. Department of Agriculture, the ASCS administers farm commodity, conservation, environmental protection, and emergency programs. ASCS goals include stabilization of the nation's agricultural economy, the conservation of farm resources, and the protection of food and feed reserves.

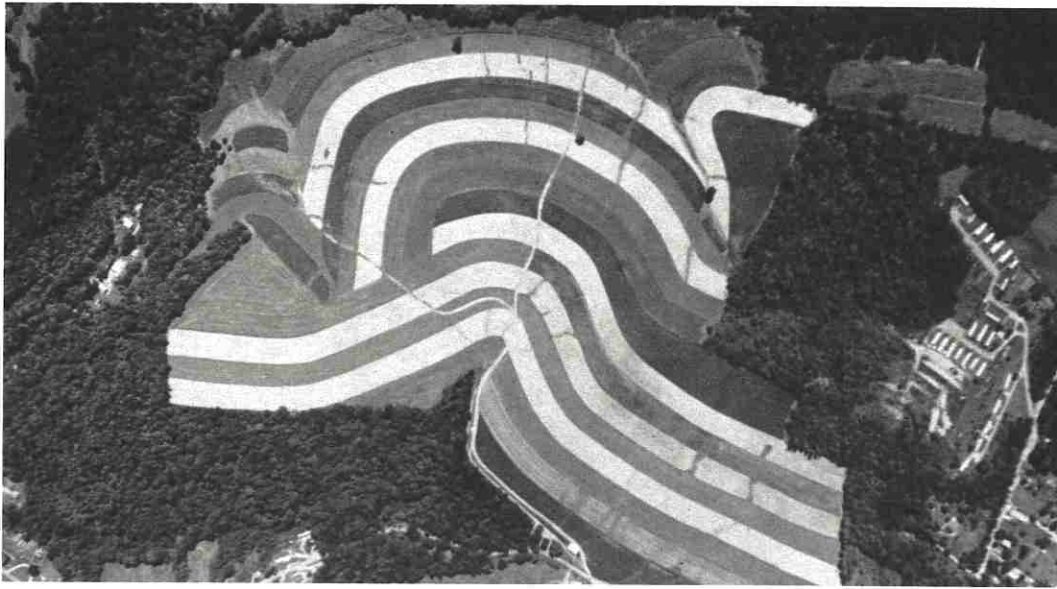
ASCS's Agricultural Conservation Program provides cost-share assistance to producers wanting to control erosion and protect water quality through practices like stripcropping, cover seeding, control of water runoff, use of conservation tillage methods, and manure management.

Under provisions of the Conservation Reserve Program, producers submit bids for an annual rental to retire highly erodible land from production for a ten-year period.

Other long-standing programs include the Emergency Conservation Program that helps restore damaged farmland, and the Forest Incentive Program that assists in the establishment of forest cover.

The Food, Agriculture, Conservation, and Trade Act of 1990 established several new conservation programs. These include the Wetland Reserve Program, the Agricultural Water Quality Protection Program, and an Environmental Easement Program. The ASCS is still developing the final provisions of these new programs.

Farmland To Be Protected



Aerial view of contour strips on the F. Rodney Smith Beef Cattle Farm in Rostraver Township

Agriculture is Westmoreland County's leading industry. But many of Westmoreland County's farms are threatened by the increasing diversion of our most productive acreage to less critical uses, such as residential and commercial development.

The Agricultural Area Security Law established a program for the purchase of agricultural conservation easements for the purpose of preserving the Commonwealth's farmlands. Agricultural easements may be purchased only for farmland which is located in an Agricultural Security Area (ASA).

In June of 1990, Westmoreland County's first ASA was created in Derry Township. Currently, eight additional townships have established ASAs totaling approximately 47,000 acres. These farms are now eligible for conservation easement purchase.

During September of 1990, the Westmoreland County Commissioners appointed nine members to the Agricultural Land Preservation Board. In addition, the Commissioners delegated administration of the Farmland Protection Program to the Westmoreland Conservation District. Since September, the Board has organized, adopted

bylaws, received training, and developed a tentative farm ranking system.

Recently, the Board learned that the total state grant to Westmoreland County for conservation easement purchases will exceed \$1 million by next year. The Preservation Board plans to have the county's program ready for implementation by late 1991. Before purchases can be made with the \$1 million state allocation for the conservation easement program, the District must help the Preservation Board receive state approval of the county's program.

District staff will be helping the Preservation Board complete the following items for 1991:

1. A farm ranking system
2. A planning map showing the county's important agricultural areas
3. A public information plan
4. An easement purchase procedure
5. An inspection and enforcement program

With the amount of County-wide preservation interest, a large number of easement purchase applications are anticipated when the program is offered.

Westmoreland County Agricultural Land Preservation Board

Mr. Donald Fretts (Chairman)

Farmer
Scottdale

Mr. William W. Buttermore

Farmer
Mt. Pleasant

Ms. Bette J. Hoover
Municipal Mayor
Murrysville

Mr. Alvin R. Kacin
Building Contractor
Pittsburgh

Mr. Lysle Sherwin
Watershed Director
Ligonier

Mr. Steve Kozar
Township Supervisor
Derry

Mr. Hilary Schramm
Farmer
Jeannette

Mr. John M. McIlvaine
Farmer
Greensburg

Mr. Frank E. Skacel, Sr.
Farmer
Derry

ADOPTED AGRICULTURAL SECURITY AREAS

Local Government Unit	Acreage	Local Government Unit	Acreage
Derry Township.....	10153	Mt. Pleasant Township.....	5232
East Huntingdon Township.....	4952	Salem Township.....	5019
Ligonier Township.....	9699	Sewickley Township.....	4866
Loyalhanna Township.....	1563	South Huntingdon Township.....	5515
Total Acreage 46,999			



Pennsylvania Has Its Own Natural Resources Magazine



The goal of the Pennsylvania Conservation Partnership is to provide educational information about conservation and the environment. It is intended to open the door to the public, local businesses, and industry to show the role and benefits of districts, and become closer to those concerned with conserving local resources.

In October 1990, the Pennsylvania Association of Conservation Districts, with the help of the Westmoreland Conservation District, launched the Partnership with the

conservation publication, "Pennsylvania Resources". The launch issue was sent to 48,000 people across the state. 20,000 copies were sent to names submitted by each conservation district, and the other 28,000 were mailed those subscribing to environmental magazines or who have been contributors to conservation issues.

A public relations consultant, Jane Sibenaller, was contracted for marketing of the Partnership and producing marketing kits that were sent to the 66 Districts. A database was developed to record subscriptions. Jill Bates, student intern, gave article assignments, and Jackson Graphics handled layout of the magazine. Invaluable financial support must be recognized as well.

At the end of 1990, the Pennsylvania Conservation Partnership membership totaled 300. Four issues of Pennsylvania Resources will be produced in 1991.

The 90's is the decade of the environment. We are positive this partnership will grow and Pennsylvania's resources will be recognized. Join today!

Record Number Of Teams Compete In '90 Envirothon

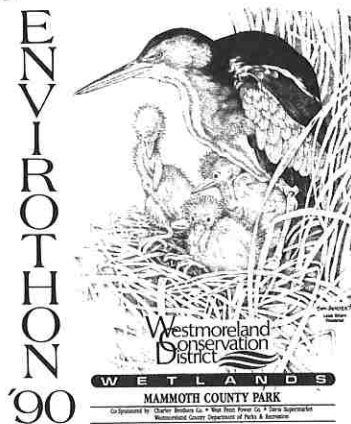
Teams from ten school districts competed in the fifth annual Westmoreland County Envirothon, won by Franklin Regional School District.

Franklin Regional, coached by Tom Pearson, went on to take third place at the Pennsylvania State Envirothon. Teams from Westmoreland County have placed in the top three statewide since the District initiated the program in 1986.

The first, second, and third place teams were awarded trophies and all participants received a specially designed T-shirt and were treated to a cookout lunch.

The Envirothon helps students learn about soils, forestry, aquatics, wildlife, and a current environmental issue. "Wetlands" was the 1990 current issue. The County event was sponsored by the Westmoreland Conservation District, Westmoreland County Department of Parks, West Penn Power Co., Charley Brothers Co., the Westmoreland County League of Sportsmen, and Davis Supermarket. The District thanks all of the agency people, students, and teachers who helped make the 1990 Envirothon a big success. We're looking forward to 1991.

The Envirothon helps students learn about soils, forestry, aquatics, wildlife, and a current environmental issue.



The team of Tom Graham, Chris Szejc, Brooke Merrill, David Augustine, and Janice Conner took first place honors at the competition for the fourth straight year. Second and third place awards went to Derry and Yough School districts respectively.

AWARDS

Each year, the Westmoreland Conservation District recognizes outstanding individuals and organizations who are committed to conserving our natural resources. The Board of Directors commends the following Award recipients:

Outstanding Conservation Organization

Katherine Mabis McKenna Foundation



left to right: Alex G. McKenna, Chairman, The Katherine Mabis McKenna Foundation; Linda McKenna Boxx, Director

The Katherine Mabis McKenna Foundation established the Ann Rudd Saxman Award, a statewide award for outstanding volunteer efforts demonstrated by individuals cooperating with their local conservation districts. The Foundation assisted the Westmoreland Conservation District with the launching of the PA Conservation Partnership, a statewide educational program of the Pennsylvania Association of Conservation Districts, and was instrumental in creating Creekside Park in Latrobe.



left to right: Herbert Guyer, 1990 Outstanding Farm Cooperator; Mrs. Helen Guyer; Sue Wiseman, PA CleanWays

1990 Outstanding Farm Cooperator

Herbert Guyer

R.D. 2, Derry, PA

Herbert Guyer, the owner of a 106 acre dairy farm, has been a District Cooperator since 1966. Mr. Guyer has incorporated many conservation practices into his farming operation. Such practices include contour

stripcropping, grass waterways, diversion ditch structures, pasture management, spring development, and an erosion control structure.

Special Conservation Recognition Award

Sue Wiseman, PA Cleanways

Sue Wiseman cleaned illegal dumps and litter along Dunn Road in Hempfield Township, and was instrumental in the formation of PA Cleanways. She assisted Westmoreland Conservation District with the development of a county-wide Leaf Composting Program, and organized a county-wide Christmas Tree recycling program.



left to right: Jack Wilkinson, Wilkinson's Nursery; Jeff Gilmore, TVG&A; Amy DeMarchis, Student Intern; Bill Roth, Roth, Moore & Associates; Alex Smith, George's Repair Service

Certificates of Recognition

The following individuals and businesses were recognized for sponsoring issues of the District's "Landmarks" newsletter:

Frank Zoracki; Prudential Insurance Company

Alex Smith; George's Engine Repair

Jack Wilkinson; Wilkinson's Nursery

Jeff Gilmore; TVG&A

Adam Eidemiller, Inc.

Bill Roth; Roth, Moore, and Associates

The following individuals were recognized for a tree-planting program in Brush Creek Cemetery, Hempfield Township:

Merle Stough

Homer Lyons

Clay Kifer

Howard Wolfgang

Ken Hebrank

The following student interns were recognized for their work in creating the PA Conservation Partnership:

Jill Bates, St. Vincent College

Amy DeMarchis, Indiana University of Pennsylvania

Pennsylvania

Erosion and Sediment Pollution Under Control

1990 Summary of Activities:

Earth Disturbance Inspections
266

Erosion And Sediment
Pollution Complaints
40

Enforcement Activities
9

Earth Disturbance Permits
8

Erosion Control Plan Reviews
258

1990 will be remembered as one of the busiest years ever at the Westmoreland Conservation District. Several municipalities signed Memorandums of Understanding (M.O.U.) with the District. The Greensburg Bypass project involved processing 7 Earth Disturbance permits; also, numerous meetings concerning stormwater management, wetlands, and erosion control were held with municipal officials, engineers, and various organizations.

Many municipalities entered into agreements with the District concerning plan reviews, inspections, and notification of problem and permit sites. These municipalities include Hempfield Township, the City of Greensburg, Derry Township, New Stanton Borough, and North Huntingdon Township. This brings the total number of municipal M.O.U.'s to nine.

On the average, the District processes seven or eight Earth Disturbance Permits per year, however, the Greensburg Bypass project involved seven permits by itself. Much extra time was spent meeting with engineers, the PA Turnpike Commission, contractors, and inspectors regarding erosion control and stormwater management on the project.

A workshop was held during the year on erosion control measures for pipeline

construction and gas well drilling sites. The workshop covered required permits and erosion controls for stream crossings and access roads, wetlands, and permanent stabilization methods. Over 80 were in attendance. Other workshops were held for loggers, the American Society of Highway Engineers, and the Laurel Highlands Chapter of the Pennsylvania Society of Land Surveyors.

Although many complaints were resolved and problems corrected during 1990, the District prepared 9 enforcement cases. Darl Rosenquest, DER Regional Soils Engineer, and Ken Murin and Mike Sherman, Program Specialists were involved with enforcement proceedings. These actions resulted in the payment of \$13,100 in penalties to the state Clean Water fund.

The Erosion and Sediment Pollution Control Program will continue as top priority in 1991. Goals include: updating the long range plan, continued development of the municipal memorandum of understanding, hiring an additional technician, holding two erosion control workshops, and developing a proposed fee schedule for plan reviews. Erosion and sedimentation will remain under control in 1991.

Conservationists Unite For Mine Reclamation



During the year, the Board of Directors and staff continued to participate in Western

Pennsylvania Coalition for Abandoned Mine Reclamation (WPCAMR) activities. WPCAMR is an organization of volunteers, representing twenty-three counties in Western Pennsylvania, who encourage the reclamation of abandoned mine land. Greg Phillips, District Manager, served as the secretary for the coalition during 1990.

1990 Activities...

- Presented testimony before the House Appropriations Subcommittee on the Interior and the House Interior and Insular Affairs Committee.
- Lobbied federal and state legislators to increase funding for reclamation.
- Held regional business meetings through Western Pennsylvania.
- Participated in the eight-state Appalachian Coalition for Abandoned Mine Reclamation.

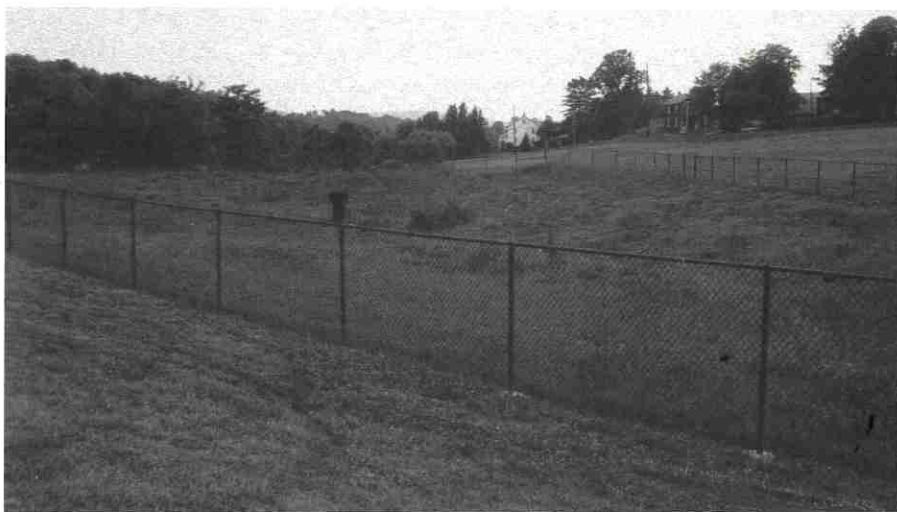
WPCAMR Objectives...

- Promoted abandoned mine reclamation in order to eliminate health and safety problems, reduce soil erosion, improve water quality, improve the utilization of affected land, and improve local economies.
- Increase and maintain steady funding for the Rural Abandoned Mine Program.
- Work to re-authorize the Surface Mining Control and Reclamation Act of 1977.
- Encourage local involvement in the State Abandoned Mine Land Program.

Stormwater Plan to Aid Flood Prone Municipalities

The Turtle Creek Watershed Stormwater Management Study was completed during 1990. The plan awaits approval by the Westmoreland County Commissioners and the Department of Environmental Resources (DER). After DER approval, watershed municipalities will have six months to adopt ordinances to implement the plan. A series of training sessions will be held by the District to familiarize municipal officials and engineers with it.

The Turtle Creek Watershed Stormwater Management Plan is the result of three years of efforts by the District, Allegheny County Department of Planning, Turtle Creek Watershed Association, and the Chester Engineers. The study was done in response to a history of flooding. It will give municipalities, developers, and engineers technical criteria for the design of stormwater



A stormwater retention pond near Hempfield Senior High School

detention facilities. The implementation of the study will prevent flood damage from escalating as development pressure increases in the watershed.

Busy Year for Hydraulic Engineer



James W. Pillsbury, Westmoreland Conservation District Hydraulic Engineer

During 1990, the District's Hydraulic Engineer performed a wide variety of technical services related to stormwater management. Following is a summary of that activity:

- 7 training sessions and conferences attended
- 14 pond requests serviced
- 15 Turtle Creek Stormwater Management Plan related activities
- 16 individuals assisted with Bureau of Dams and Waterways Management stream encroachment permit applications
- 24 wetland related site visits or technical help provided
- 34 stormwater problem sites investigated
- 60 engineers assisted with plans or designs
- 100 stormwater management plans reviewed

In addition, the Amos K. Hutchinson Expressway required seven separate stormwater

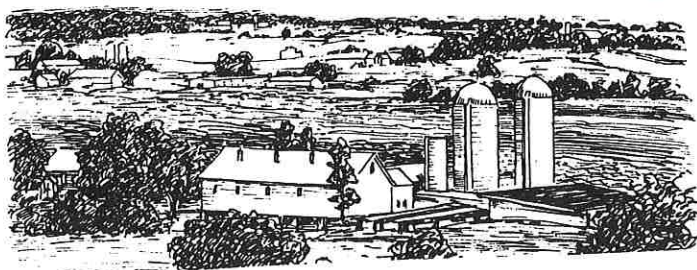
management plan reviews. Inspecting the project for erosion control/stormwater management consumed many work hours. The engineer, assisted by Greensburg Soil Conservation Service (SCS) personnel surveyed for the installation of a footbridge over Sulfur Run in Latrobe, constructed as part of a creekside trail system. The engineer also surveyed and designed a large arena for the Westmoreland County Fair.

Typical of the many smaller projects and stormwater assistance requests that occupied the engineer during 1990 are:

- Assisted developer James West, engineer Bill Roth, Hempfield Township, and Poole's Mushroom Farm in resolving a potential stormwater problem in the Wendover/West Point area
- Worked through all of the necessary stormwater and sediment plans with Art Davis of the Greensburg Masonic Lodge for their new building on the Donohoe Road
- Provided information and sketches to Camp Jo-Ann resident Peter Mohr for the construction of a driveway bridge.

These diverse examples are but a few of the many things the engineer had occasion to work on this past year. Next year promises to be even busier!

Conserving Together for 1991



Abandoned Mine Reclamation

- Cooperate with the Western Pennsylvania Coalition for Abandoned Mine Reclamation to support re-authorization of Surface Mine Control and Reclamation Act and full funding for Rural Abandoned Mine Program.
- Complete another Landowner Reclamation Program site.

Compost Recycling Program

- Cooperate with PA CleanWays to start a Christmas tree recycling program.
- Host an organizational meeting to introduce leaf supply (municipalities) to demand (landscapers, etc.).
- Begin to train individuals to serve as "neighborhood composting experts".
- Acquire program funding from Resource Conservation and Development Program.
- Cooperate with a farmer to organize an agricultural leaf mulching demonstration project.
- Produce and distribute a detailed "how-to" composting brochure.

Computers

- Complete the SCS computer cost-share agreement.
- Utilize Geographic Information System in conjunction with the Laurel Ridge Forum.
- Update the District's database

Conservation Education

- Complete the conservation slide show.
- Assist the Pennsylvania Association of Conservation District with administration of the PA Conservation Partnership and production of "PA Resources".
- Organize an informational meeting to address land application of septage.
- Sponsor the 1991 Envirothon.
- Utilize Tom Benevento's artwork to acquire funding for conservation education.
- Develop a brochure that describes District programs.
- Produce and distribute four issues of "Landmarks".

Conservation Planning

- Begin to implement the Westmoreland County Farmland Protection Program.
- Employ a part-time technician to assist Soil Conservation Service with their Food Security Act workload

Erosion and Sedimentation Control Program

- Seek funding to employ a third technician to assist with plan reviews and inspections.
- Review MOU's with selected municipalities.
- Monitor Greensburg Bypass activity.
- Conduct at least two educational workshops and give five presentations to professionals involved with erosion control.

Gypsy Moth Program

- Cooperate with Gypsy Moth Corporation Board of Directors and the Department of Planning to implement the Gypsy Moth Spray Program.
- Provide information to the public

Special Projects

- Cooperate with the Penn State Cooperative Extension Service, SCS, and Agricultural Soil Conservation Service to initiate a non-point source pollution prevention (ground water protection) program.
- Secure state and federal funding to conduct a groundwater research/demonstration project and to develop nutrient management plans for several Westmoreland County agricultural operations.
- Secure state funding to produce a full-color publication to educate farmers and the public on non-point source pollution prevention.

Stormwater Management Program

- Seek funding to employ a third technician to assist with plan reviews.
- Begin to implement the Turtle Creek Stormwater Management Study.
- Initiate another regional stormwater management study
- Conduct a stormwater management seminar/tour for municipalities and developers in the Turtle Creek watershed

Woodland Management

- Promote woodland management.
- Sign a MOU with the Bureau of Forestry.
- Elevate woodland management to full program status.

Miscellaneous

- Seek support for the construction of a facility to serve the agricultural and environmental information needs of the citizens of Westmoreland County.
- Distribute donated seedlings to selected conservation organizations.

Thank You!

We would like to extend a special "Thank You" to everyone who made it possible for us to meet our objectives in 1990. Your generous financial support and commitment to conservation have enabled us to strengthen and expand our natural resource conservation programs.

Westmoreland County Commissioners

United States Department of Agriculture, Soil Conservation Service

Pennsylvania State Conservation Commission

Department of Environmental Resources, Bureau of Soil and Water Conservation

Westmoreland County Department of Planning

Westmoreland County Department of Parks and Roads

Compost Recycling Committee Members

Penn State University

And all of the people who cooperated with us this year to make an even better Westmoreland County!

OUR CONSERVATION TEAM

WESTMORELAND COUNTY

Penn State Cooperative Extension Service

William Kelly, *County Extension Director*
P.O. Box 250, 971 Old Salem Road
Greensburg, PA 15601
837-1402

Department of Emergency Management

Richard Hunger, *Executive Director*
12 Courthouse Square
Greensburg, PA 15601
830-3758

Department of Parks and Recreation

Anthony Miele, *Director*
RD 12, Box 203, Donohoe Road
Greensburg, PA 15601
830-3950

Department of Planning

Larry Larese, *Director*
601 Courthouse Square
Greensburg, PA 15601
830-3600

Loyalhanna Watershed Association

Lysle Sherwin, *Executive Director*
P.O. Box 561
Ligonier, PA 15658
238-7560

Turtle Creek Watershed Association

700 Braddock Avenue, 4-S-12
East Pittsburgh, PA 15112
829-5042

COMMONWEALTH OF PENNSYLVANIA

Department of Environmental Resources

Bureau of Soil and Water Conservation

Harry T. Meyer, *Field Representative*
Darl Rosenquest, *Soils Engineer*
3913 Washington Rd.
McMurray, PA 15317
941-7100

Community Environmental Control

Robert Pushwa, *Supervising Sanitarian*
Armbrust Professional Building
RD 2, Box 603-C
Greensburg, PA 15601
925-8115

Bureau of Forestry

David Williams, *District Forester*
P.O. Box 519
Laughlintown, PA 15655
238-9533

Bureau of Oil & Gas Management

Chuck Eisiminger, *Oil & Gas Inspector*
RD 2, Box 435
Monongahela, PA 15063
258-7914

Bureau of Surface Mining

James Brahosky, *District Mining Manager*
Armbrust Professional Building
RD 2, Box 603-C
Greensburg, PA 15601

Bureau of State Parks

William C. Forrey, *Director*
P.O. Box 8551
Harrisburg, PA 17105-8551
(717) 787-6640

Linn Run State Park

P.O. Box 50
Rector, PA 15677
238-6623

Keystone State Park

Michael Bucheit, *Park Superintendent*
RD 2, Box 101
Derry, PA 15627
668-2939

Laurel Hill State Park

Robert Huffman, *Supervisor*
Rt. 4, Box 130
Somerset, PA 15501-8501
(814) 445-7725

PA Department of Environmental Resources

Bureau of Waste Management

Charles Duritsa, *Solid Waste Manager*
Anthony Orlando
121 South Highland Ave.
Highland Building
Pittsburgh, PA 15206-3988
645-7100

Bureau of Water Quality Management

Dave Root, *Water Quality Specialist*
Armbrust Professional Building
RD 2, Box 603-C
Greensburg, PA 15601
832-5543

Pennsylvania Department of Environmental Resources

Bureau of Air Quality Control

Joseph Pezze, *Air Quality Chief*
121 South Highland Avenue
Highland Building
Pittsburgh, PA 15206-3988
645-7100

Bureau of Dams and Waterways Management

Larry Busack, *Civil Engineer, Manager*
482 R.D. #1, Rt. 30
Clinton, PA 15026
899-2377

Bureau of Abandoned Mine Reclamation

C.H. Myers, *District Engineer*
122 South Center Street
P.O. Box 149
Ebensburg, PA 15931
(814) 472-9666

State Conservation Commission

Paul O. Swartz, *Executive Secretary*
P.O. Box 8555
Harrisburg, PA 17105-8555
(717) 540-5080

Pennsylvania Department of Transportation

William King, *District Environmental Manager*
P.O. Box 459
Uniontown, PA 15401
439-7155

Pennsylvania Fish Commission

Thomas Qualters, *Regional Manager*
RD 2, Box 39
Somerset, PA 15501
(814) 445-8974

Pennsylvania Game Commission

Don Madl, *Regional Director*
P.O. Box A, 339 West Main Street
Ligonier, PA 15658
238-9523

FEDERAL

United States Department of Agriculture

Agricultural Stabilization and Conservation Service

John Lohr, *County Executive Director*
932 St. Clair Way, Route 30 East
Greensburg, PA 15601
834-0830

Farmer's Home Administration

Michael Jankovic, *County Supervisor*
938 St. Clair Way, Route 30 East
Greensburg, PA 15601
834-0396

Soil Conservation Service

Wesley M. Gordon, *District Conservationist*
932 St. Clair Way, Route 30 East
Greensburg, PA 15601
834-3970

Department of the Army

Corps of Engineers

Col. Harold F. Alvord, *District Engineer*
Federal Building, 1000 Liberty Avenue
Pittsburgh, PA 15222-4186
644-6800

United States Department of the Interior

Geological Survey

Water Resources Division

David B. Richards, *Subdistrict Chief*
Room 2204, Moorhead Federal Building
1000 Liberty Avenue
Pittsburgh, PA 15222
644-2863

Fish and Wildlife Service

Charles Kulp, *Supervisor*
Suite 332, 315 South Allen Street
State College, PA 16801
(814) 234-4090

Office of Surface Mining

Joseph Geissinger, *Area Office Manager*
319 Washington Street, Room 360
Johnstown, PA 15901
(814) 533-4223

District Affiliations

Central Westmoreland Chamber of Commerce - advancing the economic commercial, industrial, professional cultural and community well-being of Westmoreland County.

Penn's Corner Resource Conservation & Development Area - providing technical and financial help for natural resource development within Southwestern Pennsylvania.

Western Pennsylvania Coalition for Abandoned Mine Reclamation - providing local leadership for the reclamation, development, and wise use of abandoned mine lands in the bituminous coal area of Western Pennsylvania.

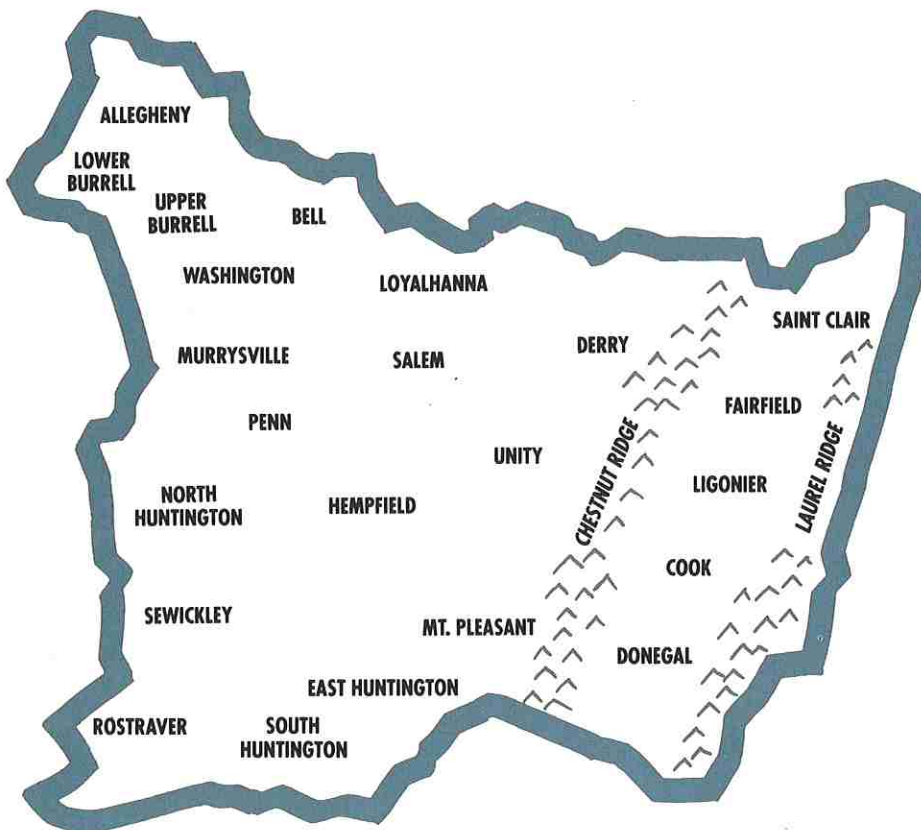
Pennsylvania Association of Conservation Districts - serving as the collective voice of Pennsylvania's 66 conservation districts, PACD works with state and federal agencies, the state legislature, farm organizations and environmental groups to facilitate the work of conservation districts.

National Association of Conservation Districts - representing 3,000 conservation districts and their state associations as their national voice on soil and water conservation issues.

Be Involved! Attend District Meetings...

The Westmoreland Conservation District is administered by a Board composed of five farmer directors, three public directors, and one County Commissioner. The Board convenes at least once a month to plan, prioritize, and supervise the implementation of programs. Regular meetings are scheduled to begin at

8:00 p.m. on the fourth Wednesday of each month. They are held at the Peoples Natural Gas Company in Greensburg. The District office is located at 932 St. Clair Way, Rt. 30 East, Greensburg, PA 15601.



"If Pennsylvania's conservation districts are to continue to meet these responsibilities, there must be an increase in district financial and staff resources, expanded training of district directors and staff, and greater public awareness of the advantages of conservation district programs."

Arthur A. Davis
Secretary
Department of Environmental Resources

Coordination and Editing - Jill Bates
Graphic Design - Jackson Graphics, Greensburg

New Faces, Old Faces, Baby Faces



Lincoln Stefl - Off To Ohio



Lorrie Giesey, Our New Administrative Secretary

Good-bye Lincoln, Hello Lorrie

by Betty Reefer and Kelly Sofaly

The District office is losing a friendly and familiar face. Lincoln Stefl, Administrative Secretary, is relocating to Carroll, Ohio, near Columbus. She has been with the District for twelve years. Lincoln has had a variety of duties over the years, including assisting the District Manager, daily administration of the District office and financial business, and coordinating educational programs. She organized farm tours for visiting conservation groups, as well as special District events, meetings, and seminars. She also participated in field work with the Soil Conservation Service.

Lincoln has contributed much to the District by serving on the Conservation Education Committee, Compost and Recycling Committee and writing the Naturally Delicious recipes for "Landmarks". She has always been willing to give more than was expected of her. We appreciate her efforts and hard work.

Although she is sorry to leave the area, her and her husband's first priority in their new home is to pursue their dream of starting a family. She does have future employment plans and will utilize her District experiences to

advance her career. She will be missed by everyone at the office, and by those who have been fortunate to know her. We wish Lincoln the best of luck!

Lorrie Giesey will assume Lincoln's position as Administrative Secretary. Lorrie, who is originally from Nebraska, has worked in the Environmental Engineering Department of Montana Tech. She developed an interest in the environment while working at Montana Tech, and was eager to get back into the conservation field.

Lorrie is an outdoor person, and enjoys hiking and camping. She also is Choir Director for her church, and enjoys painting. She is excited about working for the District, and is anxious to work with everyone involved. Welcome, Lorrie!



Secretary Betty Reefer - Conservation Minded

New Face Greets Visitors

by Kelly Sofaly

Betty Reefer is our new temporary secretary and receptionist at the Westmoreland Conservation District office while Kathy Fritz is on a temporary maternity leave, caring for her new son Jeremiah, born March 17th. Betty will be performing general secretarial duties, and updating the educational files for the district.

Betty is a life-long resident of Bell Township in Westmoreland County. She is a volunteer for the Bell Township Elementary PTA, and founder of their program, Kids for Conservation. The PTA sponsored Kids for Conservation committee distributes seedling to students for Arbor Day, maintains a Nature Center backyard habitat on the school grounds, and publishes a newsletter three times a year which focuses on ways the students can become involved with protecting the environment at home.

Betty plans to stay involved with the District as a volunteer, after Kathy returns. Her goal is to help educate the public and children about conservation.



Our New Conservation Technician, Kelly Sofaly

A Familiar Face Joins the District

by Betty Reefer

Kelly Sofaly, former Executive Director for the Turtle Creek Watershed Association, has joined the WCD staff as a conservation technician.

Kelly graduated from California University of Pennsylvania in 1989 with a degree in Environmental Resources. She had an internship with SCS and also did some projects for the District. Gaining knowledge of watersheds, she took the Executive Director position at Turtle Creek and worked there for two years, earning valuable experience in erosion control and stormwater management.

Returning to the District part-time in March, Kelly's priorities include erosion & sedimentation control, stormwater management, composting, and farmland protection.

Welcome Back, Kelly!



left: Jeremiah Scott Fritz; right: Aaron Anthony Quadro

New Conservationists Arrive

We at the District would like to congratulate two of our staff on the births of their sons. Tony Quadro, Environmental Control Officer, and his wife Ronna gave birth to Aaron Anthony, 8 pounds, 4 ounces, on March 15, 1991. Kathy Fritz, Secretary, and her husband Scott, also gave birth to a son, Jeremiah Scott, 7 pounds, 9 ounces, on March 17, 1991. Welcome to the conservation family, boys!

Our Roots Are Deep. Our Commitment Is Strong.

As a business organization founded more than 88 years ago, Charley Brothers is proud to have participated in a wide variety of community programs aimed at enriching the lives of area residents.

Community service is firmly planted in our corporate philosophy. That's why we're committed to continue being a good neighbor in the years ahead. It nurtures us ... and the communities in which we live.



ROTH, MOORE & ASSOCIATES
ENGINEERS • SURVEYORS
17 South Sixth Street
Youngwood, Pennsylvania 15697
(412) 925-8817

ENGINEERING AND DESIGN FOR
ENVIRONMENTALLY SOUND DEVELOPMENT

1-800-735-3641

814-749-7199



NIMBY INC.

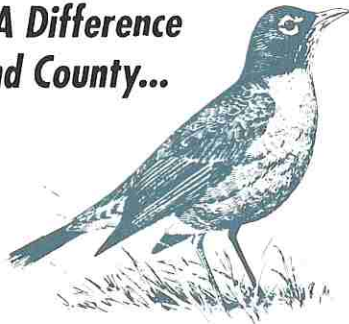
Takes the sting Out of Recycling

DAVID C. LESTER
President

R.D. 6, BOX 305
ROUTE 22
JOHNSTOWN, PA 15909

PROTECT OUR RESOURCES!

*You Can Make A Difference
in Westmoreland County...*



Join Pennsylvania's Conservation Partnership, a growing network of people interested in conserving natural resources throughout Pennsylvania and their local communities.

Your annual membership brings *Pennsylvania Resources* an attractive quarterly publication right to your door to keep you up to date on what's happening with our environment.

25% of your membership fee is returned to go to work on programs right here in Westmoreland County!

For more information call 837-5271 TODAY!

**Westmoreland
Conservation
District**

932 St. Clair Way, Rt. 30 East
Greensburg, PA 15601

Address Correction Requested

Non Profit Organization
U.S. Postage
PAID
Permit No. 574
Greensburg, PA 15601



Printed on Recycled Paper