

## Meet the District Staff

*With recent additions to the district staff, we felt it might be the right time to re-introduce our entire crew and outline their basic duties and responsibilities. We asked each professional to relate the biggest change they've witnessed during their tenure with the district.*

### ADMINISTRATIVE STAFF



(l-r) Tony Quadro, Greg Phillips, and Lorrie Stouffer

#### **GREG PHILLIPS** *District Manager*

Nearing his 20<sup>th</sup> year as district manager, Greg received his degree in Geography (Urban and Rural Planning) from Slippery Rock University. Greg's duties include fundraising, program development, district operations, outreach oversight, and implementation of policies and goals. The manager has seen tremendous growth in the conservation movement. District programs have grown to include stormwater runoff, land use, woodland management, education, and watershed restoration. The staff also has grown proportionately - from just four

positions when Greg joined the District in 1981 to 12.5. The level of experience has also contributed to quality services. County and state officials have consistently recognized the value of the District's efforts and increased financial and other forms of support. Private foundations, corporations, and individuals are becoming key supporters, both financially and through volunteer efforts.

#### **LORRIE STOFFER** *Assistant District Manager*

Working toward her communications degree, Lorrie attended Valparaiso University, Montana Tech and the

University of Pittsburgh. She will begin her tenth year at the district in 2001, and her duties include office and personnel administration, financial and computer oversight. She serves as editor for Landmarks, the Annual Report and the web page. Lorrie said the largest changes she has witnessed involve increases in funding for district programs, and in the number of district staff.

#### **TONY QUADRO** *Program Specialist/Forester*

Tony received his undergraduate degree from Penn State University, and his master of science degree in Silviculture and Forest Influences from State University of New York. Hired in 1985 as an Environmental Control Officer, Tony's duties now include implementation of the Woodland Management/Forestry and Geographic Information System programs. He also coordinates the district's technical programs, and the county's Envirothon. Tony has played an instrumental role in the development of the new environmental education curriculum. The two big changes Tony recognized are the use of computers and the new offices at Donohoe Center.



# Westmoreland Conservation District

## Board of Directors

J. ROY HOUSTON, *Chairman*  
 RON ROHALL, *Vice-Chairman*  
 CONRAD DONOVAN, *Treasurer*  
 P. ROY KEMERER, *Secretary*  
 ALBERT BARNETT, *Director*  
 P. GRAYDON LONG, *Director*

SCOTT CONNER, *County Commissioner, Director*  
 DOROTHY STONER, *Director*  
 KEITH WALTERS, *Director*

## Associate Directors

BOB ACKERMAN  
 BILL CLARK  
 JACK DRISCOLL  
 PAUL HEYWORTH  
 MARK JACKSON  
 TOM KELLER  
 BILL KOTSENAS  
 HARRY MEYER  
 THERESA ROHALL  
 DR. WILLIAM SHEA  
 ELMER SLEZAK

## Staff

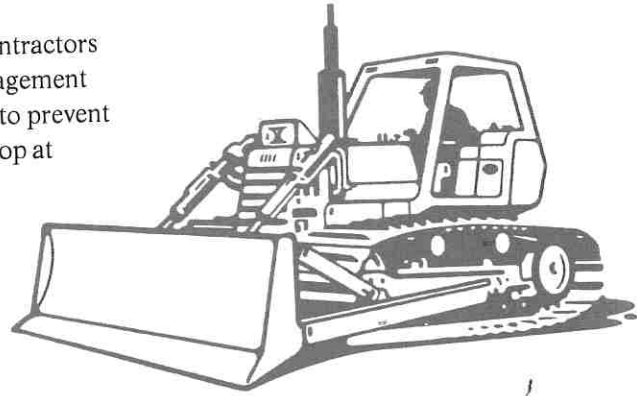
GREGORY M. PHILLIPS, *District Manager*  
 LORRIE STOFFER, *Assistant District Manager*  
 TONY QUADRO, JR., *Program Specialist/Forester*  
 CRAIG BARRAS, *Watershed Specialist*  
 JAMES W. PILLSBURY, *Hydraulic Engineer*  
 CHRISTOPHER DROSTE, *Erosion Control Technician*  
 MIKE BARRICK, *Erosion Control Technician*  
 NICOLE FOREMSKY, *District/Extension  
 Water Quality Agent*  
 DANIEL GRIFFITH, *Nutrient Management/  
 Conservation Technician*  
 KATHLEEN FRITZ, *Program Secretary*  
 KAREN BARNHART, *Secretary/Clerk*  
 JOANNE KITSKO, *Receptionist*  
 LAUREN SEATON, *Secretary*

## USDA Natural Resources Conservation Service

WESLEY M. GORDON, *District Conservationist*  
 LARRY STOKUM, *Soil Technician*  
 ROB KNIGHT, *Soil Scientist*  
 ALEX DADO, *Soil Scientist*  
 NATALIE IRIZZARY, *Intern*

## Good Show by Contractors

About 40 earthmoving contractors learned about best management practices that are used to prevent erosion during a recent workshop at Donohoe Center. The event focused on prevention methods and ways to improve cost efficiency. Speakers included staff members from the Natural Resource Conservation Service (NRCS), PA Department of Environmental Protection (DEP) and the Conservation District. Topics covered included: Proper construction of sediment trap and basin outlet structures, conveyance channels, rock construction entrances; different methods of achieving vegetative stabilization on construction sites; and a review of the rules and regulations that govern



construction activities near streams. Westmoreland County Commissioner Scott Conner presented each participant with a certificate for attending the session. He said that "the turnout was impressive and he was pleased to see so many contractors in the area are trying to do the right thing when it comes to the environment."

## On the Road to Recovery



St. Clair Township is completing their Dirt and Gravel Road Project on Wildcat and Johnny Hare roads. Sections of these two roads have been regraded, stoned and fitted with new cross-drain pipes. Also, an undersized, deteriorating culvert on Wildcat Road is being replaced with a new, larger arch culvert. This pipe spans Shannon Run, a high quality trout stream

originating at the top of Laurel Hill. The stream often overtopped the road at this crossing, washing out the road and causing sediment pollution to the stream. The township supervisors and their crew have worked for two months completing this project. Dirt and Gravel Road Project funding is made available from the State Conservation Commission.





# Meet the District Staff

## TECHNICAL STAFF



(l-r) Jim Pillsbury, Craig Barras, Nicole Foremsky, Chris Droste, Mike Barrick, Dan Griffith

### **JIM PILLSBURY**

#### *Hydraulic Engineer*

A 1988 Penn State graduate in Civil Engineering, Jim is a registered Professional Engineer. He is responsible for the stormwater management, wetlands and stream permits programs, and the Chapter 105 delegation agreement. He also assists the erosion control program and is currently instrumental in the conservation education center building development. The level of awareness among the regulated community of environmental issues was an area which Jim said had changed during his years at the district.

### **CRAIG BARRAS**

#### *Watershed Specialist*

Also a graduate of Penn State University with a B.S. in Earth Science, Craig joined the district staff in 1996 as an erosion control technician. His duties recently changed with the inception of the Growing Greener program and available funding for a watershed approach to

environmental protection. He now works with watershed organizations to improve community awareness of water quality issues. Craig said the biggest change he has seen is the district's diversity of programs.

### **CHRIS DROSTE**

#### *Erosion Control Technician*

Chris received his B.S. in Natural Science from the University of Pittsburgh-Greensburg in July of 1999. His duties include site inspections, complaint investigation, and plan reviews. He also assists with special projects and programs. Having just completed his first year at the district, he recently became an associate board member on the advisory council for the Turtle Creek Watershed Association.

### **DAN GRIFFITH**

#### *Nutrient Management/ Conservation Technician*

A 1974 graduate of Penn State University, Dan's duties include nutrient management planning and review, and

assisting farmers with agricultural conservation practices. He was an active farmer and Vo-Ag teacher for several years. Dan celebrated his first anniversary with the district this past March, and feels the most important part of his workload is to provide seamless continuity of services to farmers.

### **MIKE BARRICK**

#### *Erosion Control Technician*

A new addition to our technical staff, Mike is going through the training necessary to fulfill his position's objectives. The goals include complaint investigation and site inspections. A 1996 graduate of Saint Vincent College, he served as the Jacobs Creek Watershed Association's executive director and continues to volunteer time to this valuable organization. Mike is also a board member of the Regional Coal and Coke Trail Chapter. He is anxious to involve others in both organizations' activities.

### **NICOLE FOREMSKY**

#### *Water Quality Agent*

An exciting partnership between Penn State Cooperative Extension and the District began with Nicole's hiring May 1. She graduated from Elizabethtown College near Hershey with a degree in Environmental Science Resource Management. Her duties include education in the broad range of water quality, which includes drinking water, ground water, and surface water (creeks and streams). Nicole deals with the public on a daily basis by answering questions and giving educational presentations - the most recent being a Safe Drinking Water Clinic. She can be contacted at her office in the Extension office, by calling 724-837-1402.



# Ecological Restoration, Inc.

- Wildlife Habitat Construction
- Wetland Construction
- Ecological/Environmental Studies



- Wetland Construction
- Wildlife Habitat Construction
- Environmental Sampling
- Streambank Stabilization
- Ecological Studies
  - Benthic Macroinvertebrate Surveys
  - Fish Surveys
  - Wetland Delineations
  - Wetland Mitigation Plans

## Plants Available through our nursery:



Nursery Locations: Apollo, PA  
Raleigh, NC

Main Office: 311 Crooks Drive  
Apollo, PA 15613

Phone: (724) 334-3790 (ERI Office)  
(724) 334-3780 (Nursery)

Fax: (724) 334-3781





# Meet the District Staff

## CLERICAL STAFF

### **KATHY FRITZ**

*Program Secretary*

The backbone of the district's erosion control program, Kathy has served as an invaluable employee since 1984. She graduated from Business Careers Institute in 1982. Development in the county is the biggest change she has seen, and she feels this growth contributes greatly to the workload in the E&S program. Kathy's duties include clerical support to the Erosion and Sedimentation Control, National Pollutant Discharge Elimination System, Chapter 105 and Landowner Reclamation programs.

### **JOANNE KITSKO**

*Receptionist*

Nearing her fifth year as receptionist for the district, Joanne's friendly demeanor has certainly been an asset for both staff and the public. A graduate of Saint Xavier Academy in Latrobe, Joanne also assists with many special projects and events. She played an integral part in the festivities for the district's 50<sup>th</sup> Anniversary celebration, including theme, commemorative items, and associated events throughout the year. She also feels the growth in district programs has resulted in an increase in the number of visitors and phone calls.

### **KAREN BARNHART**

*Secretary/Clerk*

Karen joined the staff in 1998 to provide secretarial support to the administrative staff and assist with bookkeeping. Her expertise in finances has aided the district in streamlining special accounts and funding. Karen has been a volunteer with Wildlife Works, Inc., a licensed Pennsylvania wildlife rehabilitation center since 1994. Her duties have grown with the program expansion, and the Conservation Education Center fundraising



(l-r) Karen Barnhart, Lauren Seaton, Kathy Fritz and Joanne Kitsko

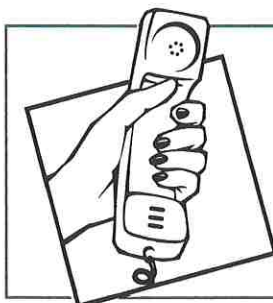
efforts. These duties include database management, special project accounting, payroll, and various clerical tasks.

### **LAUREN SEATON**

*Secretary*

Our most recent addition to the staff, Lauren comes to us with a wealth of secretarial experience in the education field. She has attended Edinboro Univer-

sity of Pennsylvania and the University of Pittsburgh-Greensburg to further her education. Lauren's role at the district will be clerical support for technical and special programs, receptionist/telephone backup, and assistance to NRCS as assigned. With the inception of our education program, Lauren's role will grow to include scheduling and clerical support for this important area.

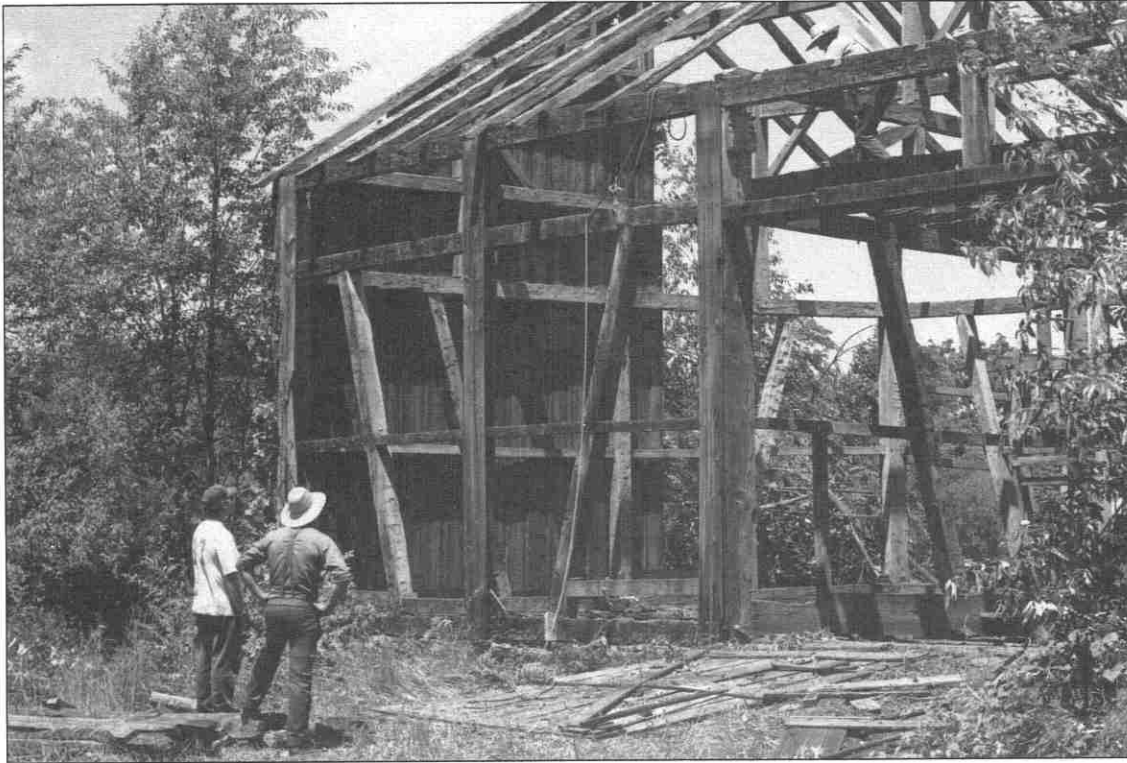


### **Have a question? Need more information?**

The Westmoreland Conservation District is here to serve YOU! If you have any questions or would like information about our various programs, please call us at (724) 837-5271



# Center for Conservation Education



Amish craftsmen carefully dismantle the bank barn in Penn Township and will authentically re-construct the structure at its new location next to the Conservation District's headquarters on Donohoe Road, Hempfield Township.

The Amish barn-raising tradition continues behind Donohoe Center in the form of an education center. As the 120-year-old barn timbers were being carefully taken down in Penn Township, a 60' x 65' rectangle of earth behind the District's offices was being opened up and edged with the concrete block that will be the foundation for the barn's next life as The Center for Conservation Education.

When it opens early next year, the Center will offer interesting and fun education programs to help Westmoreland County residents learn more about the streams, forests, soils, and open spaces right here in our own backyard.

"We have always done a good job of bringing the conservation message to farmers, earthmovers, loggers, and others who work daily with the county's natural resources," Phillips explained, "but we haven't had the resources to reach out to the general public in any kind of systematic way. With the Center, we can. And by showing more and more of the county's 380,000 residents how they can put some simple conservation measures into practice in their own backyard, we can make a tremendous positive impact on the quality of life in our county."

Because the Center is beyond the scope of the District's traditional mission, the organization must rely entirely on private donations. To-date, some \$272,000 of the project's \$400,000

capital needs has been raised. Since May, donations have been received from:

- The Mary Hillman Jennings Foundation — \$5,000
- Angelo Iafrate Construction Company — \$5,000
- Mr. Richard Ridilla, Modal, Inc. — \$2,000
- Municipal Authority of Westmoreland County — \$1,000
- A special appeal to engineering firms in the county — an additional \$1,000 (total-to-date: \$3,000)
- Mr. and Mrs. Paul W. Pillsbury — \$500

In addition, Stone & Company has agreed to donate a major portion of the concrete needed for the Center.

If you would like to have a part in this exciting new outreach to encourage respect for our county's soil, water, and land resources, you may make a tax-deductible pledge of financial support to: Penn's Corner Charitable Trust, a 501(c)(3) not-for-profit organization, c/o Center for Conservation Education, RD #12 Box 202-B, Greensburg, PA 15601. Donors at the Partner level (\$500) and above will receive permanent, public recognition.



# Education Rises into Reality



Adam Eidemiller, Inc., donated men and equipment to excavate over 1,000 tons of earth for the barn.

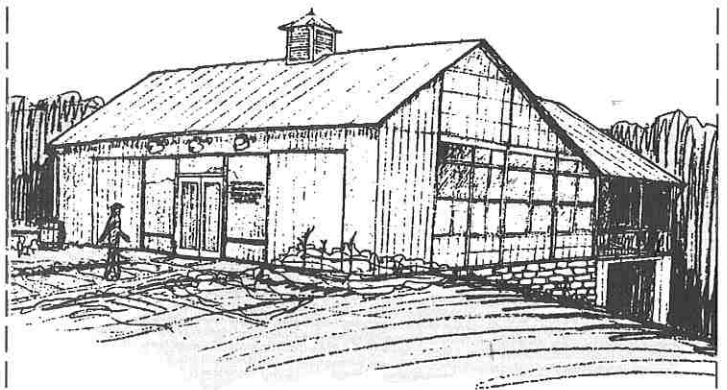
## Come and Join Us For a Barn Raising Ceremony

If you're in the neighborhood, please feel free to stop by and watch the Center's progress. Activity is speeding up and the site will be changing daily.

The public is invited to attend a Barn Raising Ceremony for the new Center for Conservation Education on September 20, 2000 at 2:00 p.m. (raindate September 27). Special guests will be in attendance and light refreshments will be served. Plan now to attend this historic event. Contact the district office at 837-5271 for further information.



When it is adapted for its new use, the barn will stand as a model of conservation in action. The building will incorporate many proven, low maintenance, sustainable technologies and recycled/recyclable materials, including a geothermal heating and cooling system and a fuel cell that will supplement the electric supply.



## THE CENTER FOR CONSERVATION EDUCATION IN WESTMORELAND COUNTY

*If you would like to have a part in this exciting new outreach to encourage respect for our county's soil, water, and land resources, we invite you to join with us by making a tax-deductible pledge of financial support.*

### CATEGORIES OF GIVING

- Benefactor \$10,000 and above
- Patron \$5,000 to \$9,999
- Friend \$2,500 to \$4,999
- Sponsor \$1,000 to \$2,499
- Partner \$500 to \$999
- Associate \$250 to \$499
- Donor \$\_\_\_\_\_ Other amount

Name \_\_\_\_\_

Address \_\_\_\_\_

Signature \_\_\_\_\_

Amount Enclosed/Amount Pledged \$ \_\_\_\_\_

*Note: Donors at the Partner level and above will receive permanent, public recognition.*

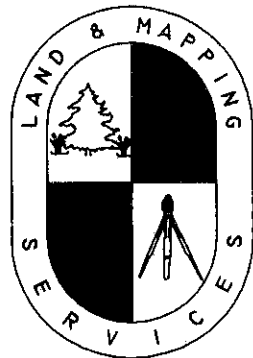
- Please indicate by checking this box if you would like your pledge to be billed and indicate over what period of time, e.g. the next 1, 2, or 3 years

*Make checks payable to:*  
Penn's Corner Conservancy,  
a 501(c)(3) not-for-profit organization

*Return to:*  
Westmoreland Conservation District  
Donohoe Center • RD #12, Box 202-B • Greensburg, PA 15601-9217

# LAND & MAPPING SERVICES

CONSULTING FORESTRY - PHOTOGRAMMETRY



- Timber Appraisals
- Timber Sales
- Land Management
- GPS (Global Positioning) Services
- Land Surveying

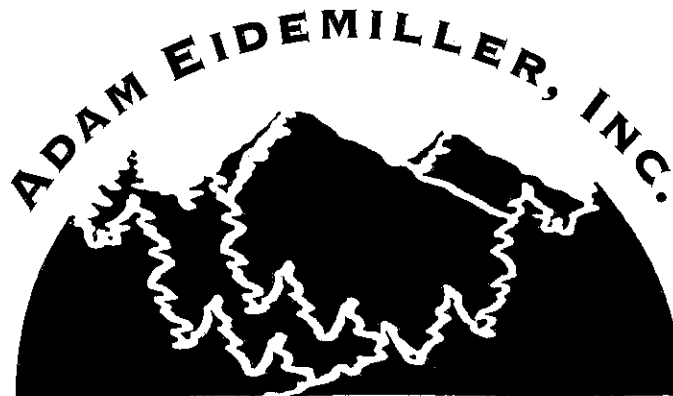
***"Providing Solutions For Your Every Land Development Need"***

**1-888-LMS-0027 (Toll Free)**

landmap@csrlink.net

<http://www.landmapping.com>

Offices in Clearfield, Ebensburg, Kersey, Emporium and Titusville



**RESIDENTIAL & COMMERCIAL DEVELOPER  
GREENSBURG, PENNSYLVANIA**

**GREENSBURG, PENNSYLVANIA 15601  
(724)837-4300 • (724) 242-0100**

***The Divisions of Adam Eidemiller, Inc.  
Supporters of Local Business and Industry***



# News 'n Notes

## A LOOK AT THE DISTRICT

### District Monthly Meeting



The Westmoreland Conservation District's September monthly meeting will be held at Twin Lakes County Park at 5:00 p.m. on Wednesday, September 13 in pavilion number two. Following the meeting the District Board will sponsor a picnic supper for District employees, friends, and their families. There is a \$5.00 per person fee to cover the cost of food. Children under 12 may attend for free. Attendees are asked to bring a covered dish dessert item (one per family) to share. Beverages will be provided. The picnic will provide an opportunity to socialize and enjoy good food and company before summer's end.

### Visit Us On The Web

Be sure to check out the District's web page at [www.wcdpa.com](http://www.wcdpa.com) for the latest information on the Education Center's progress. Photographs are added daily to keep you up-to-date on building's development.

## EDUCATION

### 2nd Annual Southwest Watershed Workshop

The 2nd Annual Southwest Watershed Workshop will be held on October 21, from 9:00 am to 4 pm at the University of Pittsburgh – Greensburg Campus. The Workshop Committee chose a Saturday to encourage the attendance of watershed group members and municipal officials. This year we hope to facilitate partnerships, exchange information and build support among various groups and organizations. For more information, please contact Nevin Ulery, Penn's Corner Conservancy at (724) 834-9063.

### New Erosion & Sedimentation Control Manual Released

On October 17, 2000 the Westmoreland Conservation District will hold a workshop for Engineers on the new Erosion and Sedimentation Control Manual recently released by the Department of Environmental Protection. The workshop will be held at Four Points Sheraton from 8:00 a.m. – 3:30 p.m. There are many changes in the new manual and the Westmoreland Conservation District technical staff encourages all engineers to attend. If you are interested, please call the office for details at 724-837-5271.



### "Eriesistible Erie"

Pennsylvania Farmland Preservation Association members and guests will experience "Eriesistible Erie" during our first-ever two day workshop, October 10th & 11th. Tours will combine history, preservation and agriculture, visiting Dobbins Landing Observation Tower, the Erie Maritime Museum, Flagship Niagara and Presque Isle State Park. Grape harvest will be in full swing at several of Erie County's preserved vineyards, with an opportunity to taste the bountiful gathering!

The keynote dinner address, at the Avalon Hotel dinner reception, is an experience you will not want to miss! Our guest speaker will warm and fire you up with unsuspected zeal, passion and unified purpose. With us again will be none other than Theodore Roosevelt! (AKA Keith McGough.) If you would like more information on the workshop, please contact Betty Reeper, PFFA President, at (724) 837-5271, ext. 129.

The Pennsylvania Farmland Preservation Program has successfully protected 165,717 acres on 1,342 farms in 42 counties. Westmoreland County remains the leading FPP County in Southwestern Pennsylvania, with 4,137 acres preserved.



## ENJOY YOUR COUNTY PARKS

### Hobgoblin Hikes

Get into the Halloween spirit by bringing the family for a "spook-tacular" time at the Hobgoblin Hikes, which will be held at Cedar Creek Park on Friday, October 20th and Twin Lakes Park on Friday, October 27th from 7:00 pm to 9:00 pm. For more information, please call (724) 830-3950.



### The Stables At Northmoreland Park

Relax, leave your hectic world behind and get close to the sights and sounds of nature at beautiful Northmoreland County Park. The Stables at Northmoreland Park offer guided horseback trail rides through the park. Trail Rides are \$20 plus tax and Pony Rides are \$3 plus tax. For more details, call (724) 727-9797.



# WILLIAM A. ROTH ENGINEERING

ENGINEERS SURVEYORS

14900 Route 30 • North Huntingdon, PA 15642  
Phone: 412-829-4676 FAX: 412-829-6515

*Engineering and Design for  
Environmentally Sound Development*

# Earth Sciences Consultants, Inc.

Ecological Services

Engineering Design

Industrial Compliance

Geologic/Hydrogeologic Services

Water Quality and Industrial Wastewater

Solid Waste Management

*Serving Our Environment For Over 20 Years!*

One Triangle Lane • Export, PA 15632  
Telephone (724) 733-7000 • Fax (724) 325-3352

(724) 925-7261  
FAX: (724) 925-7487

1-800-273-7261  
(within 724 Area Code)

Service, Quality, and Pride Since 1932



Route 819 • P.O. Box 118 • Armbrust, PA 15616  
"Three Generations and Still Growing"

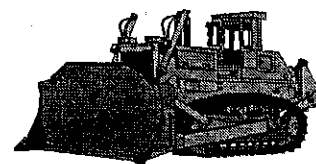
# R&L Development Company

P.O. Box 529

New Alexandria, PA 15670

Phone (724) 668-2223

Fax (724) 668-2429



- Excavation & Sitework Contractors
- Mini-Warehouse Storage
- Keystone Plaza Shopping Center



## Pioneer Mid-Atlantic, Inc.

400 Industrial Blvd. • New Kensington, PA 15068  
Phone: (412) 362-4900

### Aggregates:

(Whitney) Latrobe, PA	(724) 423-3601
(Torrance) Blairsville, PA	(724) 459-6031
Lower Burrell/New Kensington, PA	(724) 335-6564
(Brady Street) Pittsburgh, PA	(412) 362-4900
Coraopolis, PA	(412) 362-4900
(Tarrtown) Kittanning, PA	(412) 362-4900
Donora, PA	(412) 362-4900
Monaca, PA	(412) 362-4900

### Asphalt:

New Kensington, PA	(724) 339-1900
--------------------	----------------

*Your Source For High Quality Construction  
Materials In Western Pennsylvania*

## PATSY A. IEZZI, JR.

ATTORNEY AND COUNSELOR AT LAW

15 North Main Street • Greensburg, PA 15601  
Phone: 724.832.7171 FAX: 724.832.7456

WILLS, TRUSTS AND ESTATES  
PA DEPARTMENT OF REVENUE  
FEDERAL AND STATE INCOME TAX

INTERNAL REVENUE SERVICE  
CORPORATE AND BUSINESS LAW  
ESTATE AND GIFT TAX  
REAL ESTATE

# KING GARDEN PALACE & NURSERY



*Making Beautiful Gardens Come Alive™*

Phone (724) 834-0202

Route 130 East  
Greensburg, PA 15601

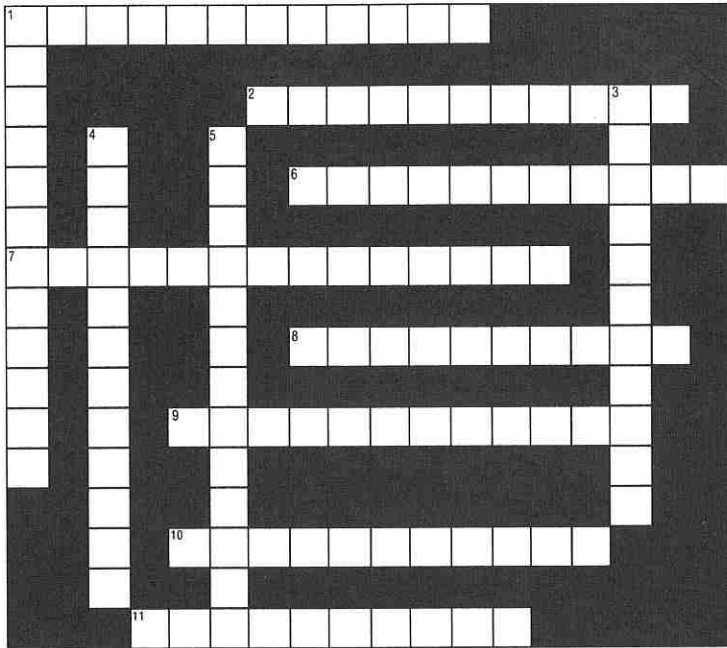




## KATHY'S KIDS KORNER

By Kathy Fritz

### DISTRICT STAFF



#### ACROSS

1. Receptionist
2. New Erosion Control Technician
6. Watershed Specialist
7. Assistant District Manager
8. Program Specialist/Forester
9. District Manager
10. Conservation Planner
11. Program Secretary

#### DOWN

1. Hydraulic Engineer
3. Erosion Control Technician
4. Secretary
5. Secretary/Clerk

See answer key on back page!

## Passport Photos

— Ready in 5 minutes —  
\$10.60 Per Set of 2

## PEE VEE'S

1544 Ligonier Street • Latrobe, PA  
(724) 539-2191

#### Hours:

Monday thru Friday 9:30 -6:00 • Saturday till 5:00

No Appointment Necessary



NATURALLY

## Delicious

by Karen Barnhart

### Crabmeat Ball

- 1 can crabmeat
- 12 oz. cream cheese
- 1 Tbls. lemon juice
- ½ sm. onion minced

Squeeze cleaned crabmeat dry.  
Sprinkle lemon juice over crabmeat.  
Let sit 1 hour. Mix onion & cheese.  
Squeeze crabmeat dry again.  
Mix with cheese. Mold into ball.  
Pour sauce over ball to serve.

#### Sauce:

Mix ½ jar Chili sauce, ½ Tbls. lemon juice, 1 ½ Tbls. ketchup, 2 dashes Worcestershire sauce, (dash horseradish, dash hot sauce, to taste)

## Find Grandma Kuhns' Cottage Key Contest

Barb Gongaware, Sylva Ferry and Rick Eichner are the latest big winners in the "Find the Key" contest featured in the last issue of Landmarks. They were treated to a gift certificate from the *Olive Garden*, and new WCD logo tee-shirts and hats.



Once again, we've hidden the key somewhere in this latest issue. This time, callers 5, 8 and 11 to Joanne or Lauren at 837-5271 will be the lucky winners. Good luck to all!

## LANDMARKS

The Official Newsletter of the  
Westmoreland Conservation District

LORRIE STOUFFER - EDITOR

JACKSON GRAPHICS: MARK JACKSON,  
STEPHANIE LAFRANKIE - GRAPHIC DESIGN

LAUREL VALLEY GRAPHICS - PRINTING

# District Offers Fall Merchandise



Just in time for those cool fall evenings, the Westmoreland Conservation District offers a new line of **long-sleeve tee-shirts**. They are available in three fashionable colors - forest green, sand, or stonewash green. These heavyweight 100% cotton tee-shirts are available in medium, large, x-large and xx-large sizes - and we have a select few with **short sleeves**. These comfortable shirts feature the district logo.

Short Sleeve Sizes - \$10.00

Long Sleeve Sizes - \$15.00

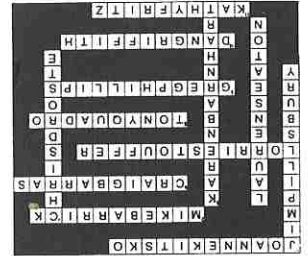
Also available at a special discount are the **2000 Envirothon tee-shirts**. These tan shirts feature the special topic "Wetlands" and the graphic art of associate director Mark Jackson. Available in all sizes, the shirts are on sale for \$5.00 each.



And if you haven't yet purchased your **WCD 50<sup>th</sup> Anniversary Commemorative plate**, there are still a few remaining for sale. These engraved plates are a collector's item, and were made especially for the district by St. George Crystal. A bargain at \$10.00 each!

## Weather-Related Disasters!!!

Recent heavy rains — as much as 4 or 5 inches — in the southwestern corner of our county are a reminder to us of the importance of our District's programs. If you are buying land or building a house, our staff can offer technical assistance with site evaluation, stream and floodplain information, and permit requirements. If you have a flooding or stream problem, we can provide advice and permit assistance to remedy the situation. Contact Jim, Chris, or Mike at 837-5271 for more information.



ADDRESS CORRECTION REQUESTED

Winner, National Association of Conservation Districts, 1997 Communications Competition

LANDMARKS

Non-Profit Organization  
U.S. Postage  
**PAID**  
Permit No. 574  
Greensburg, PA 15601

Westmoreland Conservation District  
Donohoe Center  
RD #12, Box 202-B  
Greensburg, PA 15601