

# Landmarks

## HIGH POINTS



## New Stormwater Demos Feature Latest Infiltration Pavers And Data Monitoring



In the past, sometimes the only way to know that an infiltration paver wasn't up to the job was by the puddle left standing on it after a heavy rain.

In the future, you'll have a lot more information on how well infiltration pavers are performing – measurable data, including information on soil moisture, temperature, and infiltration rates – thanks to a new stormwater installation and monitoring program at the Westmoreland Conservation District.

The new installation renovated two 15-year-old infiltration parking lots at the front and rear of the District's headquarters, along with the adjoining sidewalks in the front.

The front parking lot, originally created with seven different kinds of plastic and concrete permeable paving systems in 2001, was slightly reconfigured and renovated with just one type of permeable paver – Unilock Eco-Optiloc™ – that promises better performance in both vehicle weight-bearing and stormwater infiltration.

The rear parking area, formerly gravel, was upgraded to feature seven different permeable paver technologies, including some of the best performers recycled from the original front parking lot.

A monitoring system was installed in both parking lots to gather measurable data on how the materials are functioning in a number of areas, including the amount of infiltration and the rate of runoff. **To our knowledge, no other local organization has a stormwater demonstration gathering this type of measurable data.** As time goes on and we have a clearer picture of performance, we will share this information in our outreach programs and make it available to anyone interested.

The new front parking lot is accessed by several new permeable sidewalks that link it to Donohoe Center and the larger campus parking lot. These sidewalks are made of two different porous materials – Flexi®-Pave and Stormcrete™ – so that they also infiltrate stormwater.

Many of the materials for these renovations were donated. Thanks to ACF Environmental; Hanson Aggregates; K.B. Industries, Inc.; KEVCON; Ligonier Construction Company; Stormwater Solution Source; Tresco Concrete; and Unilock Ohio, Inc.

This work was part of the District's "Sustaining Conservation" campaign and funded in large part by the Richard King Mellon Foundation.

More photos on Facebook:

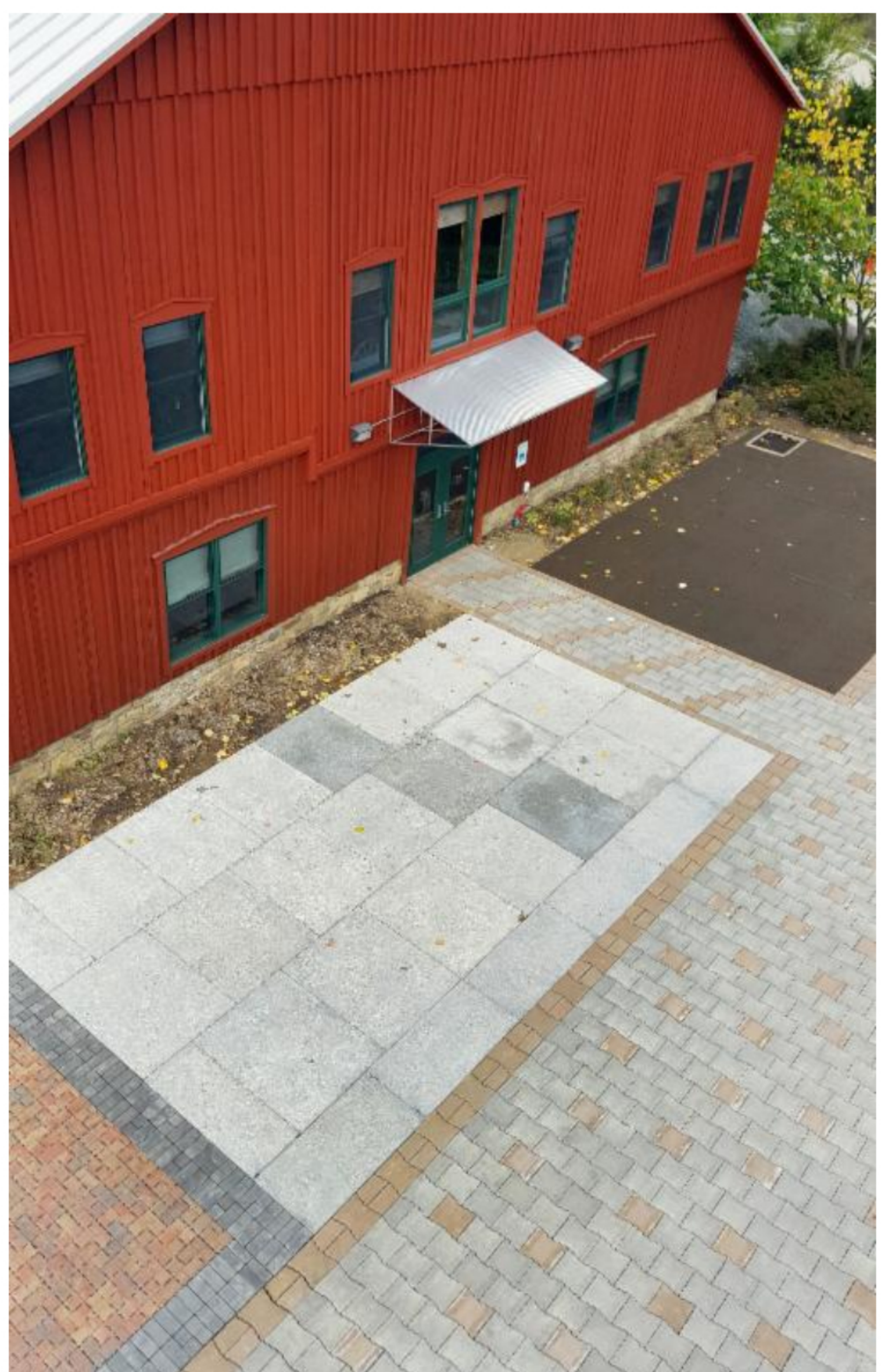
[Construction photos](#)

[Construction photos](#)

[Construction of the back parking lot photos](#)

[Thank you vendors](#)

For more information: Kathy Hamilton,  
[kathyh@wcdpa.com](mailto:kathyh@wcdpa.com), 724-837-5271.



Westmoreland Conservation District  
J. Roy Houston Conservation Center  
218 Donohoe Road, Greensburg PA 15601  
Phone: 724-837-5271 email: [jen@wcdpa.com](mailto:jen@wcdpa.com)

Visit our website

