

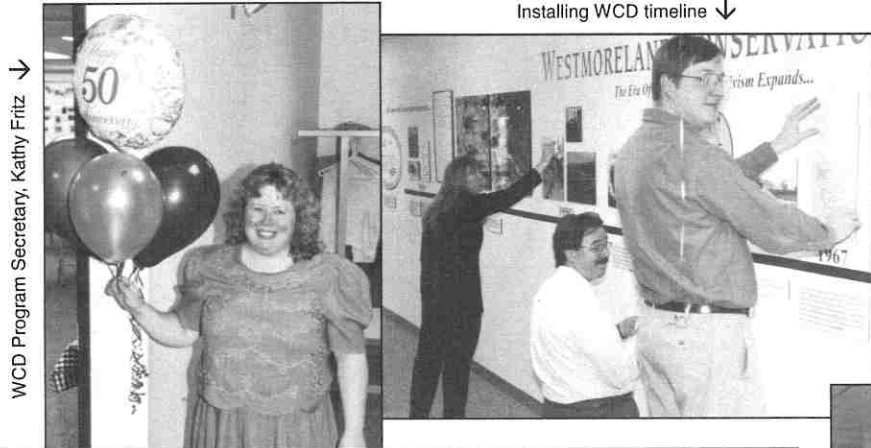


# LANDMARKS

Vol. 14 No. 1 COMMITTED TO CONSERVATION Summer 1999

## District Kicks Off 50<sup>th</sup> Anniversary Celebration

Installing WCD timeline ↓



WCD Program Secretary, Kathy Fritz ↓



↑ Jason Paulovich walks through 50 years



↑ WCD Director, P. Roy Kemerer; Past Director, Gib Hutter; Director Emeritus, Frank Skacel



↑ WCD Chariman, J. Roy Houston; Westmoreland County Commissioner, Terry Marolt; WCD Manager, Greg Phillips

The first in a year-long series of events organized to celebrate the 50<sup>th</sup> Anniversary of the formation of the Westmoreland Conservation District took place in the form of an Open House in February.

Amid approximately 200 well-wishers, County Commissioner Terry Marolt proclaimed February 23, 1999 "Conservation District Day". He then joined District Chairman Roy Houston in

unveiling a photographic time line chronicling the past 50 years of conservation in the county. This display will be open to the public during the remainder of 1999.

The remainder of the day saw continuous tours of District and agency offices and the nearby Ann Rudd Saxman Nature Park. District staff gave informal talks on programs ranging from the county soil survey to recent highway

beautification efforts, and demonstrated the computerized Geographic Information System.

Former District Directors Frank Skacel, Sr. and Gib Hutter were on hand to lend their valuable memories to the day, and joined current director Dorothy Stoner in cutting a cake which she made for the occasion. Board members Al Barnett, Roy Kemerer, Conrad Donovan,

*Continued on page 2*

# Westmoreland Conservation District

## Board of Directors

J. ROY HOUSTON, *Chairman*  
RON ROHALL, *Vice Chairman*  
CONRAD DONOVAN, *Treasurer*  
P. ROY KEMERER, *Secretary*  
ALBERT BARNETT, *Director*  
P. GRAYDON LONG, *Director*  
TERRY MAROLT, *County Commissioner, Director*  
DOROTHY STONER, *Director*  
KEITH WALTERS, *Director*

## Associate Directors

BOB ACKERMAN  
BILL CLARK  
JACK DRISCOLL  
PAUL HEYWORTH  
MARK JACKSON  
TOM KELLER  
BILL KOTSENAS  
HARRY MEYER  
THERESA ROHALL  
DR. WILLIAM SHEA  
STEVE SIMPSON  
SUE WISEMAN

## Staff

GREGORY M. PHILLIPS, *District Manager*  
LORRIE STOFFER, *Assistant District Manager*  
TONY QUADRO, JR., *Program Specialist/Forester*  
CRAIG BARRAS, *Erosion Control Specialist*  
JAMES W. PILLSBURY, *Hydraulic Engineer*  
DANIEL GRIFFITH, *Nutrient Management/  
Conservation Technician*  
BETTY J. REEFER, *FPP County Administrator*  
MARK KILLAR, *WPCAMR Regional Coordinator*  
JEFF FLISS, *WPCAMR Watershed Coordinator*  
KATHLEEN FRITZ, *Program Secretary*  
KAREN BARNHART, *Secretary/Clerk*  
JOANNE KITSKO, *Receptionist*  
TAMMY ROSS, *Secretary*  
**PA Department of  
Environmental Protection**  
DARL ROSENQUEST, *Regional Soils Engineer*  
CHUCK KUBASIK, *Field Representative*  
**USDA Natural Resources  
Conservation Service**  
WESLEY M. GORDON, *District Conservationist*  
LARRY STOKUM, *Soil Technician*  
ROB KNIGHT, *Soil Scientist*  
ALEX DADO, *Soil Scientist*

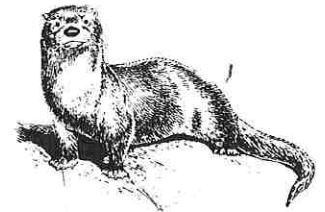
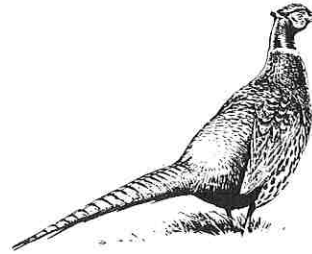
## District Kicks Off 50th Anniversary

Continued from page 1

Graydon Long and Keith Walters mingled with invited guests, local officials and the general public.

Additional 50<sup>th</sup> Anniversary events scheduled for the year include a Tree Planting (see page 4), an outdoor family

celebration and barbecue on September 11, and a special awards banquet on November 17 at the Four-Points by Sheraton with guest speaker Theodore Roosevelt (Keith McGough). Contact the District office for additional information on these events and to be included on the mailing list.



## WESTMORELAND JOINS EIGHT OTHER DOCUMENTED PENNSYLVANIA COUNTIES

Submitted by the Western Pennsylvania Conservancy

**T**he Western Pennsylvania Conservancy (WPC) has taken another step in identifying the region's special places by completing the Westmoreland County Natural Heritage Inventory.

County Natural Heritage Inventories identify and map plant and animal populations, habitats, ecosystems and natural features like creeks, caves and gorges within a particular county. They also describe the relative health of those types of natural areas while suggesting ways to conserve them.

Westmoreland County contains a sizable portion of the Allegheny Mountains, including large tracts of forestland along Chestnut and Laurel Ridges. These

mountains, as well as terrestrial habitats associated with stream valleys in the western part of the county, harbor populations of "species of special concern." Special concern species are plants or animals that are endangered, threatened or so uncommon that their rarity is a reason to be of potential concern.

The inventory took about three years of literature research, aerial photo and map interpretation, fieldwork and data analysis to complete. Lisa Smith, director of land stewardship, and ecologist Jeff Wagner worked with others in WPC's science staff to conduct the study.

For information on the Natural Heritage Inventory please call Julie Lalo at (412) 288-2773.

## FIND THE MAGNIFYING GLASS

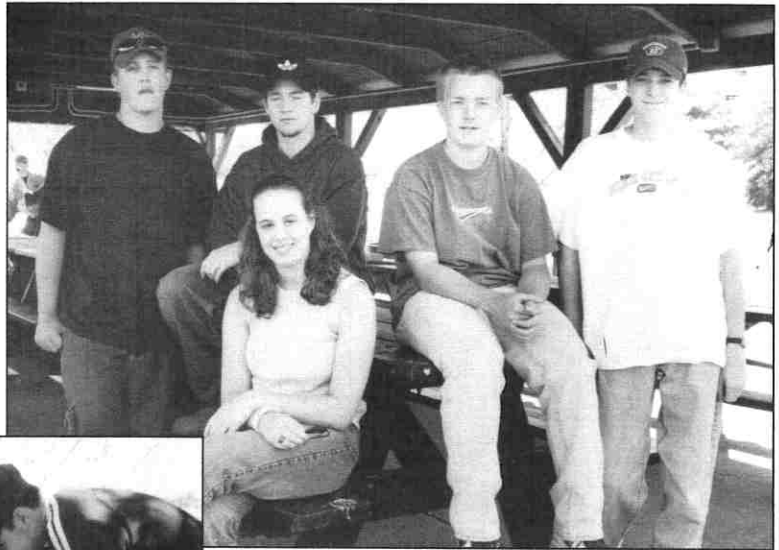
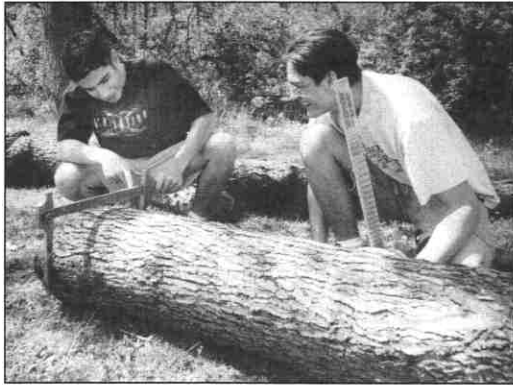
In keeping with the theme of the District's 1998 Annual Report, "**Conservation Clue**", our latest newsletter contest features a hidden **magnifying glass**. We have concealed this "clue" somewhere in this issue, and the 5<sup>th</sup>, 10<sup>th</sup>, and 15<sup>th</sup> callers to



(724) 837-5271 with the correct location will win a WCD Envirothon Tee-Shirt and a game of **Clue**<sup>TM</sup>. Good luck and may the best detective win! Westmoreland Conservation District staff and spouses, directors, and associate directors are not eligible to win.

# Wildfire

## Featured In This Year's Envirothon Competition



Area high school students were able to see a "prescribed burn," and learned how it is used to control weeds and regenerate certain types of trees at the 14<sup>th</sup> annual Westmoreland County Envirothon competition at Mammoth Park on May 3<sup>rd</sup>.

Ten area high schools sent teams for this academic challenge, which also had them exploring soils, identifying items such as a painted turtle and various animal tracks, and measuring trees to determine their volume.

The Westmoreland Conservation District sponsors this exciting academic competition each year to help students foster awareness of our natural resources. Participating were five-member teams from Belle Vernon, Burrell, Franklin Regional, Greensburg Central Catholic,

Hempfield, Kiski Area, Laurel Valley, Mt. Pleasant, Norwin, and Yough high schools. Franklin Regional won the event and was closely followed by Kiski Area and Norwin in 2<sup>nd</sup> and 3<sup>rd</sup> place, respectively.

Franklin Regional went on to place 6th in the Pennsylvania State Envirothon on Thursday, May 27 at the PP&L Montour Preserve in Montour County. Schuylkill County placed first and will advance to the National Envirothon which, this year, will be held at Humboldt State University, Arcata, California, from July 27 to August 1.

A number of cooperating agencies assisting the Westmoreland Conservation District in hosting the county Envirothon included: the Pennsylvania Game Commission, the Pennsylvania Bureau of

Forestry, the Natural Resources Conservation Service, the Westmoreland County Department of Parks and Recreation, and Carnegie Museum's Powdermill Nature Reserve.

Corporate contributors played a significant role in generously providing financial and in-kind support. Major corporate underwriters of this year's Envirothon were: Allegheny Power - Greensburg Corporate Center; Sony Technology Center; Innovative Environmental Services, Latrobe; and Shop 'n Save, New Stanton. Additional financial support was provided by Beckwith Machinery Company, Murrysville, and the Westmoreland County Sportsmans League. In-kind services were donated by Jackson Graphics.

# District Celebrates Arbor Day and 50<sup>th</sup> Anniversary with Tree Planting



(Above)  
Associate Director,  
Bob Ackerman



(Above) Tony Quadro (WCD), J. Roy Houston (WCD), Ron Langford (Bureau of Forestry), Bob Ackerman (WCD), Claude Petroy (County Parks), Jay S. Pifer (Allegheny Power), Greg Phillips (WCD), plant a special tree.



The Westmoreland Conservation District, PA Bureau of Forestry, and Allegheny Power celebrated Arbor Day by planting a northern red oak on the grounds of the Donohoe Center Arboretum adjacent to the proposed Center for Conservation Education in Westmoreland County. Allegheny Power donated the tree, which was planted in honor of the District's year-long 50<sup>th</sup> Anniversary celebration.

"This tree represents our shared commitment to environmental stewardship and conservation" said Jay S. Pifer, Allegheny Power's senior vice president. "We support the conservation goals of the District and are pleased that our partnership benefits both the citizens of the region and the environment."

Also present at the ceremony was Bob Ackerman, a New Alexandria tree farmer and associate director of the District who grew up on the property that is now Donohoe Center. Bob told of some of his fondest memories of the property and called for the District to continue its history of building partnerships with other agencies and organizations to provide a

quality comprehensive environmental education effort for Westmoreland County. "We must not have duplication of efforts in environmental education, and the Conservation District is the logical choice to facilitate this process."

The northern red oak, known for its strength and far reaching branches, is an appropriate symbol for the growth of the conservation movement during the past 50 years. The "Westmoreland Soil and Water Conservation District" was founded in 1949, when local farmers, seeking help to conserve their soil and

water resources, approached the county commissioners. Since then, the District has expanded their efforts to include a number of programs to preserve and protect the entire range of the county's natural resources – its farms, soils, streams, watersheds, and sustainable communities.

Wilkinsons Nursery of Armbrust donated two azalea shrubs as door prizes for the event. They were won by Jack Driscoll of Acme and Bill Clark of Murrysville.

## 10 Tree Planting Tips

- Select the right tree for the site
- Dig a hole twice as big as the root ball
- Do not cover the top of the root ball with soil
- Sight the tree upright, not tilted
- Tamp the soil as you backfill
- Water thoroughly after planting
- Cut twine and burlap from around stem and peel back into soil
- Mulch 2" all around tree
- Water the tree every two weeks
- Use dryer sheets to help repel deer

# Timber Harvesting and its Effects on Floods

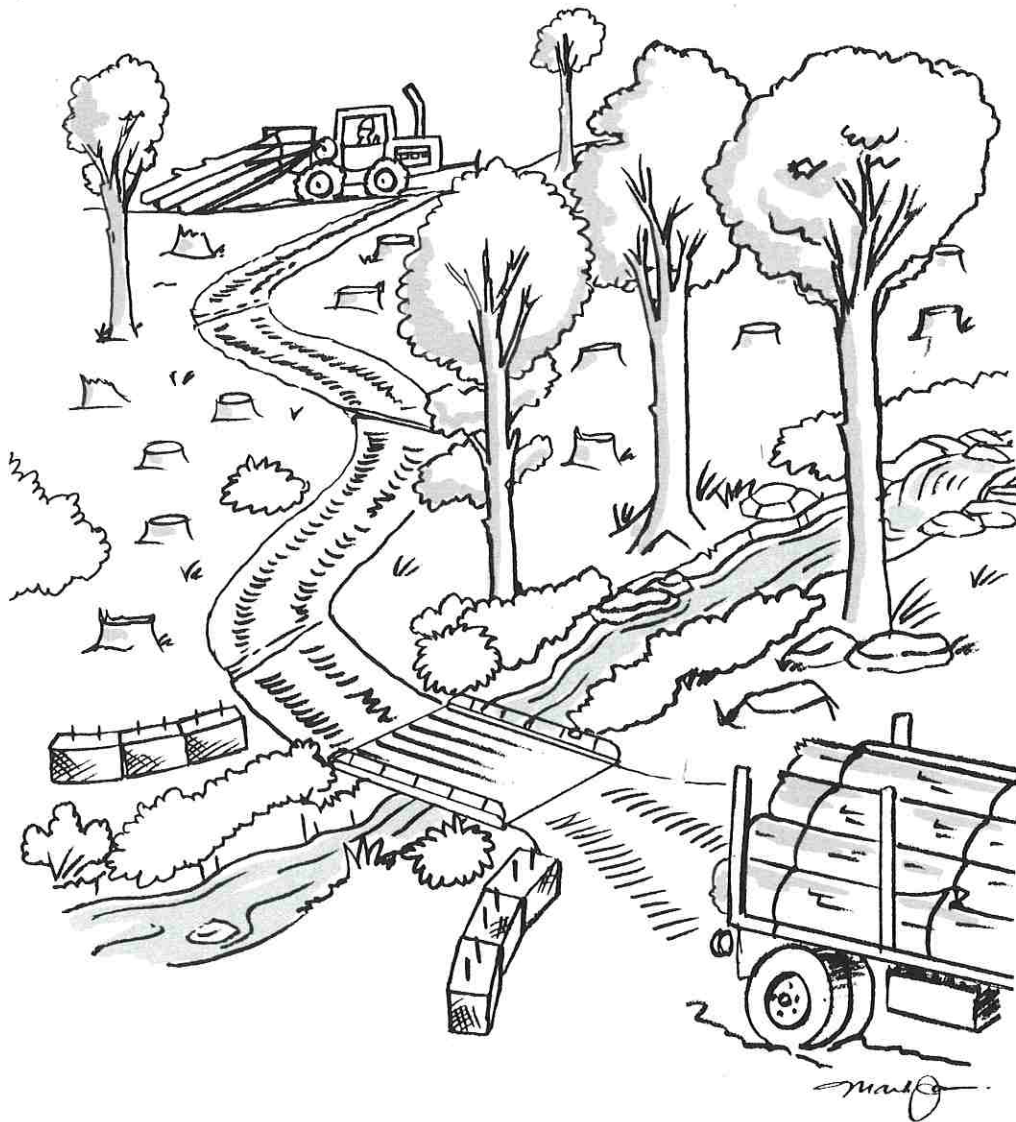
By Tony Quadro

“When those loggers cut the trees on that hillside, I just know I’ll get flooded.” “We never got flooded before they timbered.” “Cutting trees definitely causes flooding....” Emotional statements like these would seem to be based on “common sense”, but are they true? Let’s take a closer look at the facts.

Many studies have shown that stormflow increases after clearcutting. Stormflow here is defined as greater than normal base flow but being contained in the channel. This type of stormflow rarely causes property damage or threatens human life. During small storms on forested land, most of the water infiltrates into the soil. That is because the forest soils are very porous. Every year, tons of leaf litter are added to the forest floor protecting it from compaction. Burrowing animals and tree and shrub roots also provide further porosity.

When timber is harvested, the soil, other than areas used for roads, is still quite porous. Cutting trees does not reduce this porosity. Less water is lost through transpiration after cutting which will increase base flow until seedlings and brush begin to grow. Care must be taken to install controls, such as waterbars, on roads (since they are slightly more compact) to allow water to be diverted off of the roads at close enough intervals to dissipate into the forest floor. Other “best management practices” include leaving streamside buffers, and seeding and mulching steep slopes and landing areas. If these are done, erosion and runoff are minimized.

During large storms, continuing infiltration quickly saturates the soil on both forested and recently timbered land. After saturation occurs, water drains from either at essentially the same rate. The research shows that stormflow is slightly greater in streams following clearcuts, but flood flows are essentially equal on forested and cutover land during the occasional major storm that causes flood events. The facts show therefore that properly managed timber harvesting does not cause flooding.

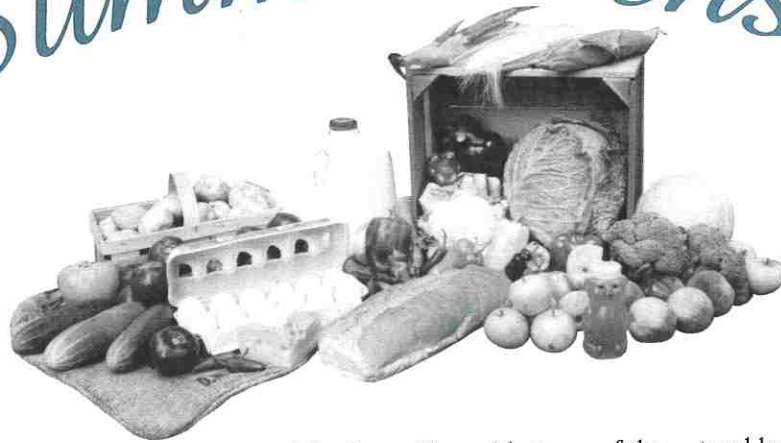


## *It's Not Nice To Fool Mother Nature*

“Stormwater Management - getting back to the way Nature intended it” was the theme of a regional workshop held at Donohoe Center on February 11. Aimed at Southwestern Pennsylvania’s township employees, elected officials, and engineers, the seminar was sponsored by the Pennsylvania State Association of Township Supervisors (PSATS), Pennsylvania Association of Conservation Districts (PACD), Pennsylvania Department of Environmental Protection (PA DEP) and the Westmoreland Conservation District (WCD). Speakers included PSATS staff, Cranberry Township Manager Jerry

Andree, and the District’s own Hydraulic Engineer, Jim Pillsbury. Andree, with valuable experience in the Pittsburgh region’s most rapidly-growing municipality, provided insight into effective and efficient stormwater controls on the local level. Pillsbury discussed the basics of stormwater management, including calculations, retention, and maintenance concerns. The popularity of this subject was reflected in meeting attendance (over 60), which necessitated holding two identical sessions - one in the morning and one after lunch.

# A Summer Sensation



The Westmoreland County Agricultural Land Preservation Board extends an invitation to you to attend the First Annual Farmland Preservation Benefit Picnic. "A Summer Sensation" will provide an opportunity for you to enjoy prime rib from Heinnickel farms, served with a bounty of fresh vegetables and fruit. This wonderful summer event will be Saturday, July 31 at Historic Hanna's Town County Park, Greensburg, PA, from 5:00 p.m. - dark.

Entertainment for "A Summer Sensation" will include local musicians performing dulcimer, blue grass and Irish folk music that ties us to the roots of our county heritage. The Westmoreland

Historical Society will provide tours of the historic buildings at Hanna's Town. Information for a drive-by self guided tour of protected farmlands in north central Westmoreland will be available. Tickets are \$25 in advance, and include a chance to enter our contest to win a handmade Amish quilt! Please join us for this wonderful event!

All proceeds benefit the Westmoreland Agricultural Land Preservation Fund. Reservation forms are available by calling our office at 724-837-5271. Reservations must be made by July 27, 1999.

Since 1993, the Preservation Board has worked diligently to protect and preserve over 3600 acres of vital agricul-

tural lands. Along with providing fresh, high-quality foods, our farms contribute to scenic beauty and a sense of place in our rural communities. Your support for farmland protection and the farmers of our county is essential to our quality of life in Westmoreland County.

## PA Farmland Preservation Association Elects New Officers

Betty Reefer of Bell Township, and administrator of the Westmoreland County Farmland Preservation Program, was recently elected president of the Pennsylvania Farmland Preservation Association. The group consists of professionals who manage the state's conservation easement program that has preserved thousands of agriculture acres throughout the Commonwealth.

Betty has been instrumental in preserving 3,586 acres through easements valued at \$6.5 million, and had served as secretary of the state association since its inception in 1995. She has been the Westmoreland County program administrator since 1992. Her family roots are deep in the county, dating back to a farm established in the Beaver Run area in the mid-1700's. She grew up on a farm operated by her parents, Donald and Nancy Crawford of Bell Township.

The county preservation board is headquartered at Donohoe Center, and meets on the first Tuesday of the month. Call 837-5271 for more information.

Yes! I/We would like to attend  
Westmoreland County Farmland Preservation's

## A Summer Sensation

on Saturday, July 31, 1999, at Old Hanna's Town County Park

Cost \$25.00 per person

Name(s) \_\_\_\_\_

Address \_\_\_\_\_

City \_\_\_\_\_ State \_\_\_\_\_ Zip \_\_\_\_\_

Phone (Day) \_\_\_\_\_ (Evening) \_\_\_\_\_

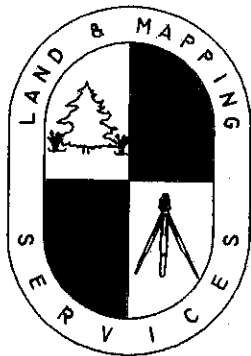
Number Attending \_\_\_\_\_ Total Enclosed \_\_\_\_\_

**RSVP by Tuesday, July 27, 1999**

Please make checks payable to Farmland Preservation Program, Thank You

# LAND & MAPPING SERVICES

CONSULTING FORESTRY - PHOTOGRAMMETRY



- Timber Appraisals
- Timber Sales
- Land Management
- GPS (Global Positioning) Services
- Land Surveying

*"Providing Solutions For Your Every Land Development Need"*

**1-888-LMS-0027 (Toll Free)**

landmap@csrlink.net

<http://www.landmapping.com>

Offices in Clearfield, Ebensburg, Kersey, Emporium and Titusville



**GREENSBURG, PENNSYLVANIA 15601**

**(724)837-4300 • (724) 242-0100**

**The Divisions of Adam Eidemiller, Inc.  
Supporters of Local Business and Industry**

# ROTH, MOORE & ASSOCIATES

ENGINEERS SURVEYORS

14900 Route 30 • North Huntingdon, PA 15642  
Phone: 412-829-4676 FAX: 412-829-6515

*Engineering and Design for  
Environmentally Sound Development*

# Earth Sciences Consultants, Inc.

Ecological Services

Engineering Design

Industrial Compliance

Geologic/Hydrogeologic Services

Water Quality and Industrial Wastewater

Solid Waste Management

*Serving Our Environment For Over 20 Years!*

One Triangle Lane • Export, PA 15632  
Telephone (724) 733-7000 • Fax (724) 325-3352

(724) 925-7261  
FAX: (724) 925-7487

1-800-273-7261  
(within 724 Area Code)

Service, Quality, and Pride Since 1932



Route 819 • P.O. Box 118 • Armbrust, PA 15616  
"Three Generations and Still Growing"

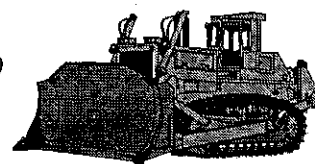
# R&L Development Company

P.O. Box 529

New Alexandria, PA 15670

Phone (724) 668-2223

Fax (724) 668-2429



- Excavation & Sitework Contractors
- Mini-Warehouse Storage
- Keystone Plaza Shopping Center



## Pioneer Mid-Atlantic, Inc.

400 Industrial Blvd. • New Kensington, PA 15068  
Phone: (412) 362-4900

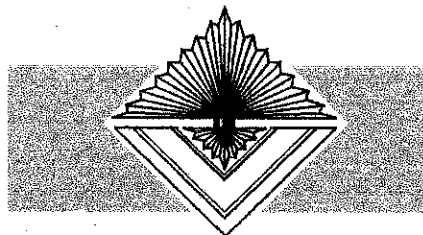
### Aggregates:

(Whitney) Latrobe, PA	(724) 423-3601
(Torrance) Blairsville, PA	(724) 459-6031
Lower Burrell/New Kensington, PA	(724) 335-6564
(Brady Street) Pittsburgh, PA	(412) 362-4900
Coraopolis, PA	(412) 362-4900
(Tarrtown) Kittanning, PA	(412) 362-4900
Donora, PA	(412) 362-4900
Monaca, PA	(412) 362-4900

### Asphalt:

New Kensington, PA (724) 339-1900

*Your Source For High Quality Construction  
Materials In Western Pennsylvania*



## MARK YARRIS

REGISTERED LANDSCAPE ARCHITECT

LANDSCAPE ARCHITECTURAL DESIGN & CONSULTATION

P.O. BOX 2184, UNIONTOWN, PA. 15401

RESIDENTIAL, COMMERCIAL  
AND PUBLIC PROJECTS

• MASTER & SITE PLANNING  
LANDSCAPE PLANS  
HISTORICAL GARDEN DESIGNS  
SITE GRADING PLANS  
E&S CONTROL PLANS  
WATERSCAPE DESIGNS  
HARDSCAPE DESIGNS  
IRRIGATION SYSTEMS DESIGNS  
PRESENTATION GRAPHICS  
CONSTRUCTION DRAWINGS

PHONE: 724.439.5533  
or 724.785.9745

CONSERVING THE NATURAL, PRESERVING THE HISTORICAL, ENHANCING THE CONSTRUCTED SINCE 1978

Western Pennsylvania's Largest Lawn, Garden and Patio Center

# KING GARDEN PALACE & NURSERY



Phone (724) 834-0202  
Phone (724) 834-8930

Route 130 East  
Greensburg, PA 15601



# Dirt And Gravel Roads Update

The Dirt and Gravel Roads Program in Westmoreland County has gotten off to a running start with the completion of the first of many projects making use of the special funding. Donegal Township Supervisors Jim Mathews, Tom Stull and their crew recently concluded their improvements to Tunnel Road near the old Laurel Mountain turnpike tunnel. A long, steep section of the road was improved with cross-pipes, ditch work, rip-rap energy dissipaters, re-crowning of the road surface, and stabilization of disturbed slopes with seed and mulch. These repairs will dramatically reduce sediment pollution to the unnamed tributaries to Indian Creek that run alongside and under the roadway. Jim Mathews stated, "This program is great for allowing rural townships, such as ours, to make badly needed improvements on roads that we normally have little or no funding to make repairs on."



Crooked Run Road, Salem Township

Salem and Fairfield townships are working to complete their projects very soon. Also, the District has received \$25,000 of the \$33,000 FY 98 Allocation. Most of the municipalities that are eligible for the program have had their dirt roads inventoried by the staff. These municipalities will be notified of a deadline to submit grant applications for projects. These applications will be reviewed and ranked by the county Quality Assurance Board.

For more information on the program or to visit the site that Donegal Township completed please contact Jim Mathews or Tom Stull at Donegal Township (724) 593-2619 or Craig Barras at the District (724) 837-5271.



NATURALLY  
*Delicious*

by Karen Barnhart

## Quick Sweet & Sour Pork

- 2 Tbls. Oil
- 1 lb. Boneless pork cut in 1" cubes
- 1 Can pineapple chunks
- ½ Cup dark Karo syrup
- ¼ Cup vinegar
- 2 Tbls. catsup
- 2 Tbls. soy sauce
- 1 Clove garlic minced
- 2 Tbls. corn starch
- ½ Cup green pepper pieces

Brown pork in oil. Add next 6 ingredients. Bring to a boil. Simmer for 10 minutes.

Mix cornstarch & 2 Tbls. water. Add to pork with green pepper. Boil 2 minutes stirring constantly.

Serve over rice.

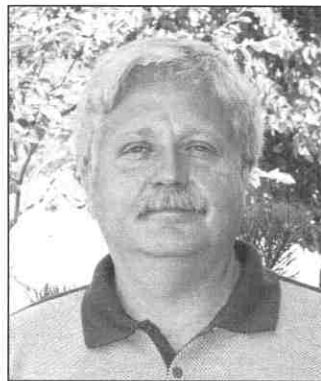
Would YOU Like to Volunteer on a Work Crew?



Help Keep  
The Five Star Trail  
in Shape!

Contact Chris Zundel at (724) 853-7227 or you can e-mail him at zundel@bellatlantic.net Meet at Huff Avenue parking lot in S. Greensburg.

- Every other Saturday running until November. -



## New Watershed Coordinator Jumps On Board

Jeff Fliess has joined the Western Pennsylvania Coalition for Abandoned Mine Reclamation as Watershed Coordinator, replacing Bob Vantorini who left in January.

"I'm excited about the challenge of addressing the water quality issues associated with abandoned mine lands. I look forward to being a part of the

solution of cleaning up problem areas created as a result of past mining and insufficient regulations," noted Jeff regarding his role with WPCAMR.

Jeff brings a new perspective to the position. His 20 years experience as an engineer and manager with Rochester & Pittsburgh Coal Company in Indiana, PA will assist him in carrying out the duties associated with the job. His previous responsibilities included engineering, permitting, design, public relations, project management, and compliance related environmental matters.

A graduate of Penn State University, Jeff holds a Bachelor of Science Degree in Mining and Mineral Engineering. He is also a registered Professional Engineer in Pennsylvania. He and his family reside in Indiana, PA. We wish Jeff much success in his new position! He can be contacted at the offices of the WPCAMR in Greensburg at 724-837-5271, ext. 111, or by e-mail at [www.wpcamr.westol.com](http://www.wpcamr.westol.com).



# Ecological Restoration, Inc.

- Wildlife Habitat Construction
- Wetland Construction
- Ecological/Environmental Studies



- ◁ Wetland Construction
- ▷ Wildlife Habitat Construction
- ▽ Ecological Studies
  - ◁ Benthic Macroinvertebrate Surveys
  - ▷ Fish Surveys
  - ▷ Wetland Delineations
  - ▽ Wetland Mitigation Plans
- ◁ Environmental Sampling
- ▽ Streambank Stabilization

## Plants Available through our nursery:



Nursery Locations: Apollo, PA  
Raleigh, NC

Main Office: 1633 Gilmar Rd.  
Apollo, PA 15613

Phone: (724) 733-9969 (ERI Office)  
(724) 327-1830 (Nursery)

Fax: (724) 733-3527



## KATHY'S KIDS KORNER - ENVIROTHON WILDFIRE DEMONSTRATION

By Kathy Fritz

P	R	E	S	C	R	I	B	E	D	B	U	R	N	T
Y	R	T	S	E	R	O	F	K	D	M	M	P	E	X
O	R	A	M	Y	E	K	P	N	H	I	W	A	Z	U
S	G	R	A	J	I	R	J	M	E	L	C	O	K	Z
G	V	E	E	G	Q	T	T	Y	Z	H	D	F	D	F
C	O	N	T	R	O	L	W	E	E	D	S	N	T	S
M	L	E	N	O	I	B	T	R	L	U	T	E	W	N
G	U	G	E	U	S	F	S	C	I	T	A	U	Q	A
Z	N	E	T	P	C	B	D	L	L	M	F	Z	V	S
X	T	R	E	F	I	L	D	L	I	W	F	Q	D	O
O	E	F	D	N	B	P	N	A	I	O	Z	C	I	D
R	E	K	G	G	Z	U	E	S	C	W	S	B	T	B
S	R	O	S	N	O	P	S	F	G	L	Y	R	I	I
C	S	O	M	L	C	D	M	R	H	W	M	A	I	K
N	O	H	T	O	R	I	V	N	E	H	T	4	1	I

Can you find the following words  
in the puzzle to the left?

- |                    |                   |
|--------------------|-------------------|
| 1. 14th Envirothon | 9. Teachers Bingo |
| 2. Aquatics        | 10. Ten Teams     |
| 3. Control Weeds   | 11. Trees         |
| 4. Forestry        | 12. Volunteers    |
| 5. Prescribed Burn | 13. WCD Staff     |
| 6. Regenerate      | 14. Wildfire      |
| 7. Soils           | 15. Wildlife      |
| 8. Sponsors        |                   |

## NEW VIDEOS AVAILABLE AT DISTRICT LIBRARY

Have you ever wondered what people are doing to help save the environment? Have you ever wished you could see firsthand what you can do to join the effort? The Pennsylvania Department of Environmental Protection and the Environmental Fund for Pennsylvania have donated twelve "Green Works for Pennsylvania" videos to the District's Library. "Green Works for Pennsylvania" is an award winning cable television show about Pennsylvania's environment.

You and your family or organization can borrow these fast-paced, thirty-minute videos from our library by calling (724) 837-5271 and speaking with Tammy Ross. Topics include air quality, watersheds, recycling and much more. To learn about "Green Works for Pennsylvania," visit their website on the Internet at <http://www.greenworks.state.pa.us>, or phone the Environmental Fund for Pennsylvania at 1-800-334-3190.

# Summer Sale...You Want 'Em - We Got 'Em

Back by popular demand are the very "fashionable" 1999 Envirothon tee-shirts! Featuring this year's special topic "Wildfires", the black shirt is available in several sizes. For the first time ever, we are also offering youth sizes. We also have limited numbers of Envirothon shirts from previous years at a special discounted price. And for that special someone, how about a WCD cookbook guaranteed to add some spice to your summer recipe selections!

Use this form to place your order, and mail it with your check made out to Westmoreland Conservation District to:

### Westmoreland Conservation District

Donohoe Center

RD 12 Box 202-B, Greensburg, PA 15601

Allow 2-3 weeks for delivery

You can save shipping and handling costs by making your purchase at the District Office, on Donohoe Road about one mile from Westmoreland Mall. Office hours are Monday-Friday from 8 a.m. to 4 p.m.

### COOKBOOKS

\_\_\_\_\_ Quantity Ordered  
 \_\_\_\_\_ Price Per Cookbook (\$10.00)  
 \_\_\_\_\_ Shipping (add \$3.00 per book)  
 \_\_\_\_\_ TOTAL FOR COOKBOOK(S)

### TEE-SHIRTS

\*Please add \$2 shipping for all tee-shirts

#### 1999 Envirothon Tee-Shirts

Black shirt wildfire graphic

Adult Sizes \$10.00 each

Children's Sizes \$5.00 each

Please indicate number requested

ADULTS

LARGE \_\_\_\_\_

X-LARGE \_\_\_\_\_

CHILDREN

MEDIUM \_\_\_\_\_

LARGE \_\_\_\_\_

#### 1998 Envirothon Tee-shirts

White shirt w/PACD otter

Adult sizes only \$5.00 each

\_\_\_\_\_ X-LARGE

\_\_\_\_\_ 2X-LARGE

#### 1997 Envirothon Tee-shirts

White shirt w/Steve Simpson photograph

Adult size only \$5.00 each

\_\_\_\_\_ 2X-LARGE

#### 1996 Envirothon Tee-shirts

Black shirt w/bats

Adult size only \$5.00 each

\_\_\_\_\_ 2X-LARGE

Total Enclosed \_\_\_\_\_



## Dan Griffith Joins District Team

Joining the Westmoreland Conservation District staff as Technician/Nutrient Management Specialist is Dan Griffith. A graduate of Penn State University with a B.S. in Vocational Agriculture and General Science, Dan has over 20 years of farming experience and was a high school teacher of Vocational Agriculture.

Dan's activities will be split between three different program areas. Fifty percent of his time will be spent working with farmers on establishing nutrient management plans, twenty-five percent on erosion and sedimentation control program technical work and the remaining twenty-five percent of his time doing conservation work with the Natural Resources Conservation Service along with the Project Grass program.

Besides his work on the family farm, Dan is also very involved in community activities including the Presbyterian Church of Marion Center, coaching teeball at Canoe-Grant Elementary School and as a Scout Den Leader. He has also been very involved with Indiana County Farm Bureau and the Indiana County 4-H program. Dan and his wife Leanne have 3 children, Jessica, Christopher and Sammy. They will soon be moving to Greensburg. His hobbies include computers and reading.

## We Need Your Help...



Despite every attempt to keep **mailing addresses** up-to-date, we receive a lot of returned mail. There is a *monetary charge* to the Westmoreland Conservation District every time a piece of mail is *returned*. There are many factors that can cause a piece of mail to be returned, including a **change in name or address**, the **death** of the recipient, or perhaps you would just like

to have your name removed from the mailing list. Please drop us a note at the following address notifying us of the change, or call Karen Barnhart at (724) 837-5271. Thanks so much for your help!

### Mail changes to:

Westmoreland Conservation District  
Donohoe Center  
RD 12 Box 202-B  
Greensburg, PA 15601

## Upcoming Events and things to look for

### Sunday, July 25

Westmoreland Co. League of Sportsmen  
Conservation School  
*Monastery Run, St. Vincent College  
Latrobe, PA*

### July 28, 29, 30

Pennsylvania Association of  
Conservation Districts (PACD)  
Quarterly Meeting  
*Ramada Inn, Altoona, PA*

### Saturday, July 31

"A Summer Sensation" sponsored by:  
Westmoreland County Agricultural Land  
Preservation Board  
*Hanna's Town, PA (see article inside!)*

### August 20-28

Westmoreland County Fair  
*Westmoreland Fair Grounds,  
Mt. Pleasant Twp.*

### Saturday, September 11

Family Barbecue - \$3 per Child, \$7 per  
Adult, \$15 per Family. Please call  
(724) 837-5271 for reservations by  
Wednesday, August 25th.  
1:00 - 4:00 p.m.  
*Donohoe Center*

## LANDMARKS

*The Official Newsletter of the  
Westmoreland Conservation District*

LORRIE STOUFFER - EDITOR

JACKSON GRAPHICS: MARK JACKSON,  
STEPHANIE LAFRANKIE - GRAPHIC DESIGN

LAUREL VALLEY GRAPHICS - PRINTING

ADDRESS CORRECTION REQUESTED

*Winner, National Association of Conservation  
Districts, 1997 Communications Competition*

LANDMARKS

Non-Profit Organization  
U.S. Postage  
**PAID**  
Permit No. 574  
Greensburg, PA 15601

Westmoreland Conservation District  
Donohoe Center  
RD #12, Box 202-B  
Greensburg, PA 15601