

A New Way To Clean Up Our Act - PA CleanWays



PA CleanWays members left to right: Carrie Gallagher - President; Paul Thomas; Sue Wiseman - Secretary; John Kellas; David Teats; Helen Thomas; Fred Reed; Janis Dominico - Vice-President; Sam Dominico.

by Sue Wiseman

Illegal dumping is growing at an epidemic rate. Roads that previously had one or two dump sites are now lined with garbage. And new dumps are springing up almost overnight.

Most people are not aware of the seriousness of the problem since these dumps tend to flourish in rural areas and out-of-the-way places. But for those who are aware of the seriousness, particularly those who live on or near these roads, the situation has strong negative impacts upon their lives. Just try to imagine what it would be like to live on or near one of these roads. Imagine greeting the world each day looking at other peoples' trash: on your way

to school, to the store, or to your place of work. Imagine giving people directions to your home and telling your children that this is where they have to live.

With the recent formation of a nonprofit group, PA CleanWays, these people and the community as a whole can now join others who have and are successfully fighting the illegal dumping problem. The idea behind PA CleanWays is to provide the people that care about a road or area with the resources to clean it up. This involvement instills a sense of ownership, a sense of community pride, and a willingness to keep it clean.

PA CleanWays received their charter last June through the efforts of Sue Wiseman, Carrie Gallagher, Janice and Sam Dominico, Tom Godlewski, Greg Phillips, Lysle Sherwin, John Kellas, Al Barnett, Archie Bossart, and the support of the Westmoreland Conservation District.

On November 3rd, PA CleanWays held its official "kickoff". About 100 people attended. U.S. Representative John Murtha and PA Representative Allen Kukovich, the guest speakers, praised the groups efforts and offered their continuing support. Westinghouse Electric Corporation hosted the event in appreciation of the groups cleanup activities on nearby Tomajko Road. And, Y&S Maintenance, a Waste Management company, presented PA CleanWays with its first monetary donation.

At the kickoff, Congressman Murtha asked members if they would testify before Congress on the seriousness of the problem and on the success of their efforts. In anticipation of this opportunity, PA CleanWays will be conducting a survey to locate all the illegal dumps in Westmoreland County so that they can numerically define the seriousness of the problem.

The problem of illegal dumping is complex and so is the strategy of PA CleanWays. Not only is PA CleanWays helping people clean up and re-beautify their environment, they are also planning to get to the root of the problem through a comprehensive and extensive education program and through support of adequate and effective ordinances and legislation.

PA CleanWays is now accepting new members and is working with several groups interested in performing cleanups in the spring.

For information call or write to:

Sue Wiseman
R.D. #11, Box 631
Greensburg, PA 15601
Phone: 925-9653

Dam Construction Begins At Bridgeport

The long-awaited Bridgeport Dam will soon be reality. The 1,200 foot-long, 55 foot-high structure will be downstream from the former reservoir in Mt. Pleasant Township. Charles Merlo Inc. of Mineral Point, near Johnstown, was awarded the \$5.6 million construction contract for the project. Preparatory work started January 7 with major earth-moving set for March 11, when official groundbreaking is planned. The design calls for a 500-foot-wide emergency spillway. The earthen dam will require 250,000 cubic yards of soil and rocks. The project should be completed in 1993.

"The dam will look unusual because it will be high, yet hold a relatively small body of water," explained Wes Gordon, SCS's District Conservationist. The permanent pool of water will be about the same size of the old reservoir which covered about 30 to 40 acres.

Although the original plan was to build a multi-purpose structure capable of retaining enough water for flood prevention and recreation, the Bridgeport project ended up strictly as a prevention device. However, it is reported that the design does call for "fishing jetties", which are built-up rock formations

that trail out into the water, for fishermen to use.

The new dam will be built over two construction seasons, Gordon said, with two allocations from Public Law 566, the Watershed Protection and Flood Prevention Act of 1952, administered by the U.S. Department of Agriculture. The widening and deepening of Jacobs Creek from Bridgeport to Scottdale could start in 1993 and complete the flood prevention project.

The Westmoreland Conservation District launched the drive for a flood control dam shortly after

Continued on page 2

Bridgeport Dam continued

100-year-frequency floods swept through Scottdale and Everson in 1954. Floods caused more damage in 1971 and 1972. The first application for federal money was submitted in 1964 and the watershed work plan was completed in 1968.

WCD had to get more than 50 percent of the landowners residing above the dam to agree to install conservation practices that would prevent sedimentation of the proposed flood pool.

We Won!

by Jill Bates

This year, the Westmoreland Conservation District is proud to announce that "Landmarks" achieved a first place national standing in the annual National Association of Conservation Districts-EMI Newsletter Awards.

According to NACD President Robert Wetherbee, since 1957, the Equipment Manufacturers Institute and the National Association of Conservation Districts have jointly sponsored the newsletter contest encouraging conservation districts to further their educational and informational efforts by informing the public about natural resource issues through newsletters.

"Landmarks" was found to be the most imaginative, with its print and color complimenting the good layout. Our articles hit a diverse audience, and the photography, kids' page, meeting schedule, caught the judges eyes as well as yours.

We'll keep writing good newsletters as long as you keep reading them. Cut out the coupon for a free subscription to "Landmarks", and fill it out for a friend. THANKS!

Naturally DELICIOUS



by Lincoln Stefl

Saucy Chicken Stir Fry

- 2 T. Oil
- 1 C. broccoli flowerettes
- 1 C. cauliflower flowerettes
- ¾ C. carrots (julienne)
- ¼ C. green onions, sliced
- 1 garlic clove, minced
- 3 chicken breasts (skinned, boned, cut into 1" pieces)
- ½ C. Miracle whip
- 1 T. Soy sauce
- ½ t. ground ginger

Stir fry vegetables 5 minutes, till crisp & tender. Remove. Add oil to skillet, stir fry chicken 5 minutes till tender. Remove from heat. Add remaining. Mix well, heat through. Serve over rice.

What's New at the Fair?



by J. Walter Pillsbury

One of the major attractions at the Westmoreland County Fair is getting a new home. The Fair Board is constructing a new arena for demolition derbies, tractor pulls, and other such events. The new arena is located just northeast of the existing one, and will be 560 feet long and 240 feet wide — over twice the size of the old arena.

Activity began in Spring, 1990, when SCS surveyors Joe Obenski, Larry Stokum, Greg Cironi, and Wes Gordon created a topographic map of the area proposed for construction. WCD's Jim Pillsbury then designed the arena, calculating the

amount of earthwork — cuts and fills — needed to maximize the size of the arena floor within the boundaries of the property. Wes Gordon provided the technical specifications, working closely with the Fair's Don Fretts on the details. In the Fall of 1990, the surveyors and designers returned to the site and staked out the work in the field. R&L Development Co. of New Alexandria then moved over 25,000 cubic yards of earth to create the new arena. With the anticipated completion of seating in the Spring of 1991, the arena eagerly awaits the growls of motors and the roar of the crowd.

District Offers Woodland Management

by Forrest Woods

In cooperation with the Pennsylvania DER, Bureau of Forestry, the Westmoreland Conservation District will offer woodland management advice to the residents of Westmoreland County.

Forests can be managed to provide a variety of benefits such as: timber products, wildlife habitat, recreation areas, fuelwood supply, or some combination of benefits. With a professional forester to help define and prioritize objectives, a landowner can carry out management activities such as timber harvesting in the most productive and environmentally sound manner.

There is a great deal of timber harvesting activity in Westmoreland County, particularly in the ridges to the east, and this activity will affect the quality of our forests, water, and wildlife populations for years to come. For this reason, there is a need for technical advice to be made available to woodland owners, and a greater need for cooperation with timber harvesters in the erosion and sediment control program.

The lack of management planning can lead to several problems such as: regeneration failure, decreased quality of timber and wildlife habitat, soil erosion and reduced water quality, and longer periods between harvests. Doing nothing leaves everything to chance, and is economically non-productive.



The Westmoreland Conservation District can provide education and technical advice on: forest management, erosion and sediment control, the Tree Farm System, gypsy moth suppression, the PA Act 319 tax incentive, planting information, and other sources of forestry assistance. If you are interested in being a "District Woodland Cooperator", call staff forester Tony Quadro at 837-5271.



Kathy's Kids' Corner

Forest Friends Word Search

by Kathleen Fritz

Z	W	G	O	H	D	N	U	O	R	G	C	E	G	H	Black Bear
R	E	K	C	E	P	O	O	W	R	U	F	T	T		Cub
C	E	H	I	L	D	A	Y	R	W	O	R	S	O	I	Red Fox
F	L	E	R	R	I	U	Q	S	Q	U	P	U	K	J	Squirrel
I	R	B	D	E	N	X	D	T	N	S	S	O	N	K	Chipmunk
H	T	E	S	L	Z	R	A	M	Y	E	K	R	U	T	Turkey
T	E	A	V	K	I	R	O	P	O	S	S	U	M	I	Whitetail Deer
O	I	V	N	E	K	A	L	D	E	V	C	I	P	B	Buck
M	F	E	W	S	E	C	T	O	K	X	J	T	I	B	Doe
Y	Y	R	U	B	U	C	K	E	H	E	I	E	H	A	Fawn
S	T	M	K	B	T	O	T	S	T	C	E	M	C	R	Rabbit
P	T	C	J	E	S	O	S	O	E	I	E	F	G	L	Field Mice
Y	R	T	Q	Y	H	N	T	T	D	M	H	N	O	M	Owl
G	U	F	B	T	C	E	F	C	L	D	K	W	A	H	Woodpecker
B	L	A	C	K	B	E	A	R	I	L	L	A	S	N	Grouse
O	B	W	Z	A	M	Z	R	B	R	E	D	F	O	X	Hawk
F	N	Y	M	E	R	E	J	Z	Y	I	V	T	P	O	Raccoon
Y	T	W	E	R	A	T	I	A	X	F	W	U	R	Q	Ground Hog
															Muskrat
															Beaver
															Opossum

Wintertime is a nice time of the year to take a walk in the woods to see all the forest friends!
But, there is a forest pest. Can you find it?

Keep These Meetings In Mind

- Westmoreland Conservation District Meeting
March 27, 8 PM
People's Natural Gas Company
Donohoe Road, Greensburg
- Westmoreland County Agricultural
Land Preservation Board
March 5, 1 PM
Westmoreland Co. Parks & Roads Building
Donohoe Road, Greensburg
- Western PA Coalition for Abandoned Mine
Reclamation
March 21, 10 AM
Woodlands Lodge, Indiana, PA
- PA CleanWays
March 14, 7:30 PM
Westmoreland Co. Parks & Roads Building
Donohoe Road, Greensburg
- Bridgeport Dam Dedication Ceremony
March 7, 10 AM
Bridgeport Dam site
- ASCS Conservation Program Review Meeting
March 6, 7:30 PM
Greensburg Garden & Civic Center

Introduce A Friend To Landmarks!

The official newsletter of the
Westmoreland Conservation District is
published quarterly and available *free of
charge*. Use this coupon to add a friend's
name to our mailing list.

Name _____

Address _____

Please Mail Coupon to:

**Westmoreland
Conservation District**

932 St. Clair Way, Rt. 30 East
Greensburg, PA 15601

Published by
**Westmoreland
Conservation District**
932 St. Clair Way, Rt. 30 East
Greensburg, PA 15601
Phone: 412-837-5271

Board of Directors

J. ROY HOUSTON
Chairman

GILBERT HUTTER
Vice Chairman

FRANK E. SKACEL
Treasurer

WILLIAM BUTTERMORE
Secretary

ALEX J. SMITH
Director

TERRY MAROLT
Commissioner, Director

P. GRAYDON LONG
Director

AL BARNETT
Director

PAUL ROY KEMERER
Director

Associate Directors

- ED CZARNECKI
- DR. WILLIAM SHEA
- MRS. GEORGE SHUPE
- SCOTT CHURBOCK
- MARK JACKSON
- BONNIE WENK
- KEITH WALTERS
- TOM KELLER
- GEORGE HAPCHUK

Staff

- GREGORY M. PHILLIPS
District Manager
- LINCOLN STEFL
Administrative Secretary
- ANTHONY P. QUADRO
Environmental Control Officer
- JAMES W. PILLSBURY
Hydraulic Engineer
- KATHLEEN A. FRITZ
Secretary
- JILL BATES
Student Intern

Department of Environmental Resources, Bureau of Soil & Water Conservation

- HARRY MEYER
DER Field Representative
- DARL ROSENQUEST
Regional Soils Engineer
- U.S.D.A., Soil
Conservation Service
Staff
- WESLEY M. GORDON
District Conservationist
- JOE OBENSKI
Soil Technician
- LARRY STOKUM
Soil Technician
- VIRGIL WILFORD
Construction Inspector

LANDMARKS

Sponsors

Sharing a concern for resource conservation through the support of this publication.

For information on Landmarks Sponsorship Rates call the Westmoreland Conservation District at 837-5271

Since 1932



J.W. WILKINSONS
Nurseries
Inc.
Route 819
ARMBRUST, PENNSYLVANIA 15616

Ornamental Shrubs, Evergreens, Shade Trees, Vines, Garden Supplies

NURSERY — 925-7261 JARY WILKINSON — 925-3702
JACK WILKINSON — 925-2582 JIM WILKINSON — 925-2073

“Conserve Soil and Water Resources”

GEORGE'S REPAIR SERVICE and Warranty Services



630 Oakland Ave.
GREENSBURG, PA 15601
Phone 837-5567



PHOTOGRAMMETRIC MAPPING

JEFFREY P. GILMORE
SALES REPRESENTATIVE

SALES OFFICE

601 S. Fourth Street
Youngwood, PA 15697
(412) 925-8607

PRODUCTION FACILITY

Legislative Route 17065
P.O. Box 197
Lanese, PA 16849
(814) 345-5607

FRANK S. ZORACKI & ASSOCIATES

Business, Financial & Pension Planning

Wellington Square - Suite 201
1225 S. Main St. • P. O. Box 904
Greensburg, PA 15601
(412) 837-8846

The Prudential



DIVISIONS OF

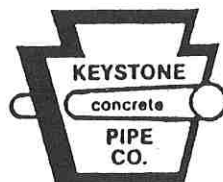
ADAM EIDEMILLER, INC.

GREENSBURG, PA 15601
837-4300 - 242-0100



**CLASSIC AUTOMATIC
CAR WASH**
BRUSHLESS

8:00 a.m. - 9:00 p.m.
Sundays 9:00 a.m. - 4:30 p.m.
(across from Westmoreland Mall)
Rt. 30 East, Greensburg



GREENSBURG, PA 15601
834-7140 - 361-7355



**Sheraton Inn
Greensburg**

ROUTE 30 EAST, 100 SHERATON DRIVE, GREENSBURG, PA 15601
PHONE: (412) 836-6060 FAX: (412) 834-5640

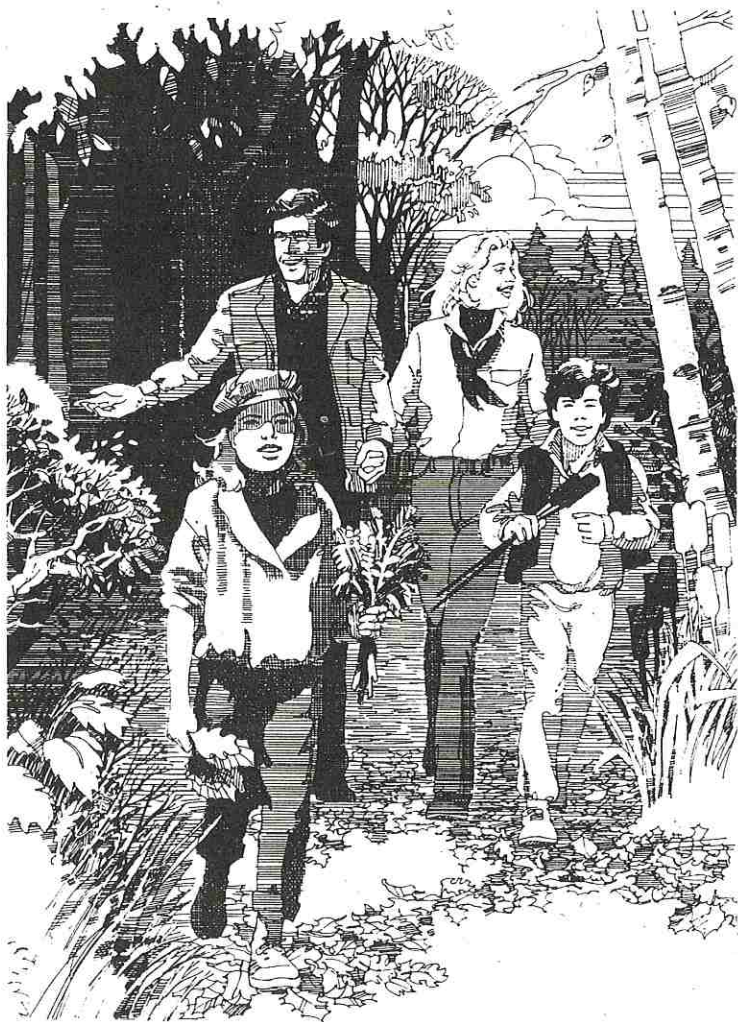
SPEED QUEEN

FABRIC CARE CENTER
1003 E. Pittsburgh St., Greensburg
(Across from Westmoreland Mall)

Protect Our Resources

Join Pennsylvania's Conservation Partnership

You Can Make A Difference in WESTMORELAND COUNTY!



Join a growing network of conservation minded people interested in conserving natural resources in Pennsylvania and their own local communities.

Become a Member of the **Pennsylvania Conservation Partnership**, a conservation education program of the Pennsylvania Association of Conservation Districts and your local county conservation district.

Your annual membership:

Brings "Pennsylvania Resources," a quarterly publication right to your home.

Find out what's happening across the state with Pennsylvania's natural resources. Informative articles about recycling and easy things your family can do to help the environment. Discover natural wonders, native plant and animal species, unique get-aways and vacation spots which combine fun and your concern for the environment. And much more.

Gives you a voice in helping your local environment.

Twenty-five percent of your membership fee is returned to your county Conservation District to be used for local conservation, education & demonstration projects on:

- Recycling
- Leaf Composting
- Farmland Preservation
- Land Use Surveys
- Water Testing
- Abandoned Mine Reclamation
- Wildlife Habitat Improvements
- Ground & Surface Water Protection
- Artificial Wetland Construction

Makes you a part of your local conservation district.

Discover local services like soil information, woodland management, conservation planning, stormwater control and technical support.



YES! I want to join a growing network of individuals who share my local interest and environmental concerns.



**Pennsylvania
Conservation
Partnership**

"An Education Program of the
Pennsylvania Association of Conservation Districts"

Name _____ Age _____
Address _____
City _____ State _____ Zip _____
Phone _____ County Westmoreland
Occupation _____

Mail your tax deductible Membership fee of to:
Pennsylvania Association of Conservation Districts
c/o *Pennsylvania Conservation Partnership*
932 St. Clair Way, Rt. 30 East
Greensburg, PA 15601
Phone: 412-837-5271

- \$12.00 Individual; Educational Institution; Library
- \$25.00 Organization; Government Agencies
- \$50.00 Business
- \$500.00 and above Corporate Sponsor

Make checks payable to: Pennsylvania Conservation Partnership



For Your Information

CITY RECYCLING

Councilman Roland Mertz of the City of Greensburg, announced that in accordance with the state mandated recycling law, Act 101, all city employees will be doing their part for the recycling act. City departments and offices will be recycling all materials that are recyclable.

Mertz stressed that, "Recycling can not be accomplished by collecting materials alone. A major component of a successful recycling program is a need for manufacturers to use recycled materials. In order for the manufacturer to make products from recycled goods, they must know their products will be purchased. In most products, there is no documented proof that the quality of a product made from recycled material is less in quality than a product made without it.

It is very important that to make recycling work, we must go full circle and ask if the product being purchased is made with recycled materials."

EROSION WORKSHEETS

The DER's Bureau of Soil and Water Conservation, announced the publication of the Erosion and Sedimentation Control Plan Development Checklist and Worksheets. It will supplement the Department's Erosion and Sediment Pollution Control Program Manual and provide detailed guidance and sample worksheets for the preparation of erosion and sedimentation control plans. This publication is available at WCD. There is no charge if picked up at the office. For requests by mail, a 9 x 12 inch self-addressed return envelope, affixed with \$1.85 in postage, must be included with the request to Westmoreland Conservation District, 932 St. Clair Way, Greensburg, PA 15601.

STEWARDSHIP WEEK

"As You Sow", is the theme of National Soil and Water Stewardship Week, April 28-May 5, 1991.

Suggesting that everyone can help care for our earth's environment by looking for things to do right outside the doorway, WCD is encouraging local churches, organizations, and individuals to join the nationwide observance of this stewardship week. The District, which works throughout the year on soil and water conservation measures, has color literature and materials especially designed to convey the 1991 theme, "As You Sow". If interested write or call, Westmoreland Conservation District, 932 St. Clair Way, Greensburg, PA 15601, 837-5271.

Non-Toxic Alternatives To Household Products

Each individual can make a difference in reducing the dumping of hazardous waste into waterways. Check the list below, post it on your refrigerator,

and replace some common household chemicals with non-toxic alternatives.

FOR	TRY	FOR	TRY
Air freshener	simmer cinnamon and cloves	Mosquito repellent	burn citronella candles
Ants in house	red chili powder at point of entry	Moth repellent	cedar chips in a cotton sachet
Bleach	borax	Oil stain removal	white chalk rubbed into stain before laundering
Brass polish	worchestershire sauce	Oven cleaner	2 tablespoons liquid soap + 2 tsp. borax + warm water
Chrome polish	apple cider vinegar	Paint brush softener	hot vinegar
Dish detergent/grease cutter	1/2 cup baking soda + usual amount of dish soap	Pet odor removal	cider vinegar
Drain cleaner	plunger followed by 1/2 cup vinegar + 2 quarts boiling water	Refrigerator deodorizer	open box of baking soda
Fertilizer	compost, vermicompost, manure, fish blood and kelp meals	Rug/carpet cleaner	club soda
Fleas on pets	gradually add brewers yeast to pet's diet	Rusty bolt/nut removal	carbonated beverage
Flies	well watered pot of basil	Scouring powder	baking soda
Furniture polish	1 tablespoon lemon oil in one pint mineral oil	Shaving cream	brush and shaving soap
Garbage disposal deodorizer	used lemons	Silver polish	1 qt. warm water + 1 tblsp. baking soda + piece of aluminum foil + 1 tblsp. salt
Grease removal	borax on a damp cloth	Spot remover	club soda, lemon juice
Handcleaner: paint/grease	baby oil	Toilet bowl cleaner	paste of borax + lemon juice
Ink spot remover	cold water + one tablespoon cream of tartar + 1 tablespoon lemon juice	Tub and tile cleaner	1/4 cup baking soda + 1/2 cup white vinegar + warm water
Linoleum floor cleaner	1 cup white vinegar + 2 gallons of water	Upholstery spot removal	club soda
Mildew remover	equal parts of vinegar and salt	Water mark removal	toothpaste
		Wine stain removal	salt
		Window cleaner	2 tablespoons vinegar in 1 quart warm water

ROTH, MOORE & ASSOCIATES

ENGINEERS • SURVEYORS

17 South Sixth Street

Youngwood, Pennsylvania 15697

(412) 925-8817

ENGINEERING AND DESIGN FOR ENVIRONMENTALLY SOUND DEVELOPMENT

A New Landmarks SPONSOR



932 St. Clair Way, Rt. 30 East Greensburg, PA 15601

Address Correction Requested

Non Profit Organization
U.S. Postage
PAID
Permit No. 574
Greensburg, PA 15601