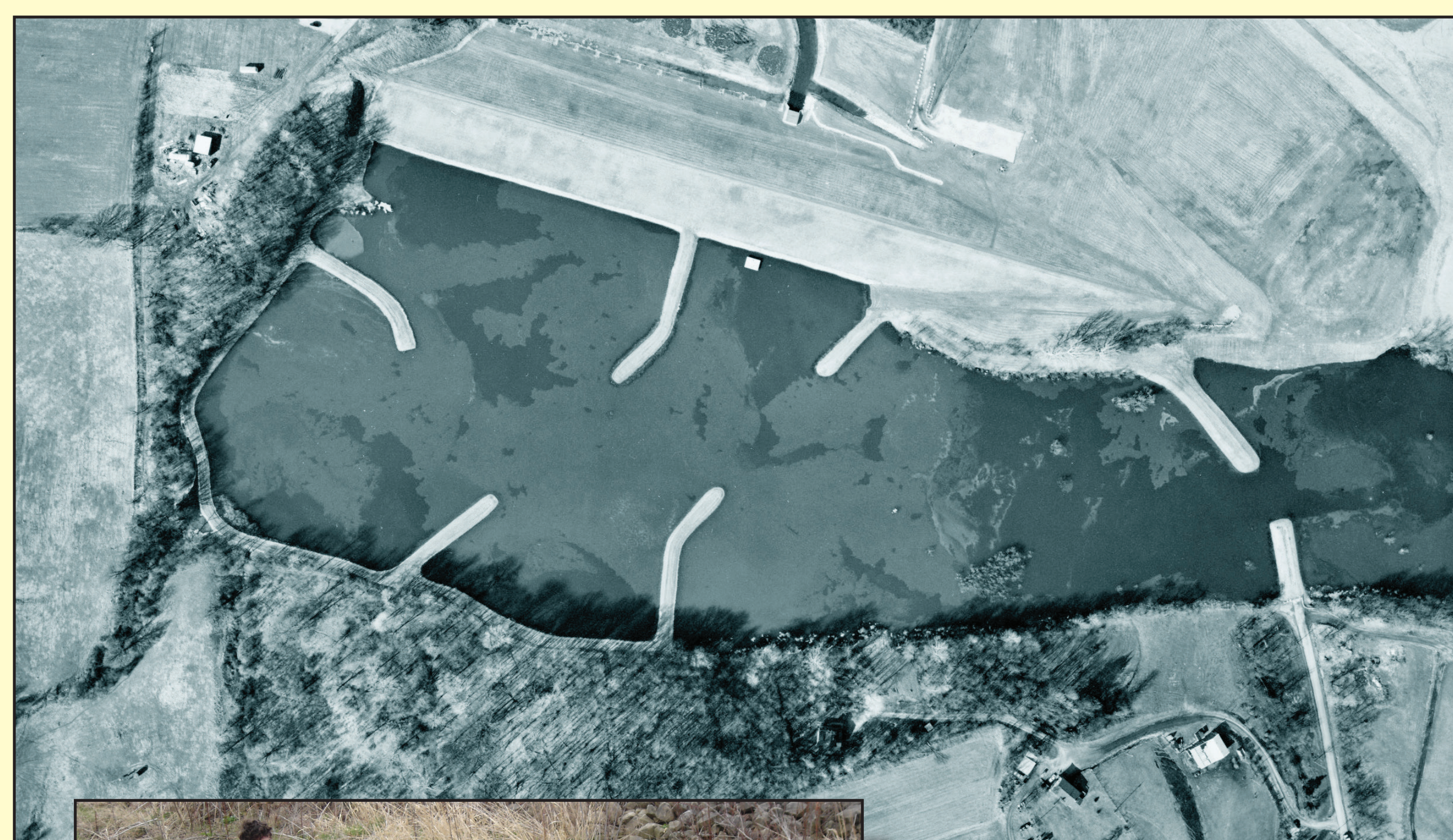


2013 J. Roy Houston Conservation Partnership Award Jacobs Creek Watershed Association



Jacobs Creek Watershed Association has been doing important conservation work for decades in a 98-square-mile area that includes Laurelville, Scottdale, Mount Pleasant, Acme and other communities in Westmoreland and Fayette counties.



Bridgeport Dam

High school students study water quality at the Scottdale Channel.

One of the groups most significant conservation contributions is the Jacobs Creek Watershed Protection and Flood Prevention Project. This project, which includes Acme Dam, Bridgeport Dam, Greenlick Dam, and the Scottdale Channel, has been protecting area residents and businesses from flooding and providing recreation opportunities since the early 1970s. It is one of only a few such projects in the entire U.S. that addresses an entire watershed.



The Jacobs Creek Watershed Association Board of Directors, l-r: Joe Kalinowski, Kristina Tarasan, Barry Whoric, Patty Miller, Sharyn Kmiecik, Mike Barrick and Andrew Dzurko. Missing from the photo are: Susie Carmichael and Frank Romeo.

More recently, the watershed association designed and is about to begin constructing measures that will 'green' Scottdale. A variety of infrastructure improvements will be added in the business district to manage stormwater and, at the same time, to improve the historic town's charm and aesthetics. Measures to be installed next year include porous pavement, low plantings, porous pavers for crosswalks, street trees, and more. This work will complement similar measures that have been added in the past few years in nearby Gazebo Park and the area around the Scottdale Library.



Scottdale's Gazebo Park now features porous pavement, a special material that allows rain to pass through and be absorbed into the ground.



At the end of this project, Scottdale will be a role model for towns across the state in how to implement innovative stormwater management measures.

The Jacobs Creek Watershed Association also is undertaking similar infrastructure work in Mount Pleasant.

Westmoreland Conservation District